

Code: RG-AP680-L

ACCESS POINT **RG-AP680-L** Wi-Fi 6, SFP 2.4 GHz, 5 GHz, 547 Mbps + 2402 Mbps RUIJIE

Net: **2 240.00 PLN** Gross: **2 240.00 PLN**

The RG-AP680-L access point broadcasts 2 separate wireless networks in the 5 GHz band with speed 2402 Mb/s and in the 2.4 GHz band with speed 574 Mb/s.

The Access Point is designed for outdoor use, ensuring good connectivity in extreme weather environments over longer distances.

Supports 802.11ax standard - the next generation of Wi-Fi.

Access Point is managed through the web and the cloud (Ruijie Reeye application).



SPECIFICATION

Frequency range:	<ul style="list-style-type: none">• 2.4 GHz (2.4 ... 2.4835 GHz),• 5 GHz (5.150 ... 5.250, 5.250 ... 5.350, 5.470 ... 5.725, 5.725 ... 5.850 GHz) ,
Antenna type:	2x2 MU-MIMO - built-in <ul style="list-style-type: none">• 2.9 dBi @ 2.4 GHz - 2 pcs• 4.9 dBi @ 5 GHz - 2 pcs
Standards:	<ul style="list-style-type: none">• IEEE 802.11 b/g/n/ax @ 2.4 GHz,• IEEE 802.11 a/n/ac/ax @ 5 GHz
Baud rates:	547 Mbps @ 2.4 GHz + 2402 Mbps @ 5 GHz
LAN ports:	<ul style="list-style-type: none">• 1 x 10 / 100 / 1000 Mbps Ethernet + PoE IN - RJ45,• 1 x 1000 Mbps - SFP
Port USB:	—
LED indicators:	Power / System, 3 x Signal indicator
DDNS:	—
DHCP server:	✓
Firmware update:	✓
Protections:	<ul style="list-style-type: none">• WEP 64/128-bit, WPA-TKIP, WPA-PSK, WPA2 AES• IEEE 802.1x and Radius Authentication• Black list• Access Control List - ACL package filtering based on source and destination MAC addresses• CPP• NFPP• SSID hiding
Operation modes:	Access Point



DELTA-OPTI Monika Matysiak; <https://www.delta.poznan.pl>
POL; 60-713 Poznań; Graniczna 10
e-mail: delta-opti@delta.poznan.pl; tel: +(48) 61 864 69 60

Management interface:	<ul style="list-style-type: none"> • Ruijie Cloud Central Management System • Configuration using the Ruijie Reyeeye application • Remote management • Web browser • Console - RJ-45 output
Mobile phones support:	Android: Free application Ruijie Reyeeye iOS (iPhone): Free application Ruijie Reyeeye
Default IP address:	192.168.110.1
Transmitter power:	max. 28 dBm @ 2.4 GHz max. 28 dBm @ 5 GHz
Main features:	<ul style="list-style-type: none"> • Wi-Fi 6 support - a standard that offers higher speeds, better performance in high-traffic environments • OFDMA • MU-MIMO - a multi-antenna transmission function that allows to increase the bandwidth and reliability of connection with the client of the network • Load balance • WLAN : 32 x BSSID - 16 x Wireless BSSID • Multicast • IPv4/IPv6 • ICMP - Static routing • VPN support : IPsec, PPPoE • SNMP • Statistical Reporting, System logs • DHCP client • Bluetooth 5.0 interface • RESET button • Signal indicator • Industrial wide temperature design. • Overvoltage protection : 9 kV
Housing:	Plastic, hermetic
"Index of Protection":	IP68
Power supply PoE:	PoE (802.3af/at)
Power supply:	<ul style="list-style-type: none"> • 48 V DC / 0.35 A (not included) • PoE / PoE+
Power consumption:	max. 12.95 W
Operation temp:	-40 °C ... 65 °C
Permissible relative humidity:	0 % ... 100 % (non-condensing)
Weight:	• 1.13 kg (without bracket)
Dimensions:	251 x 168 x 64 mm (without bracket)
Manufacturer / Brand:	RUIJIE
Guarantee:	3 years

PRESENTATION

Front view:



DELTA-OPTI Monika Matysiak; <https://www.delta.poznan.pl>
POL; 60-713 Poznań; Graniczna 10
e-mail: delta-opti@delta.poznan.pl; tel: +(48) 61 864 69 60



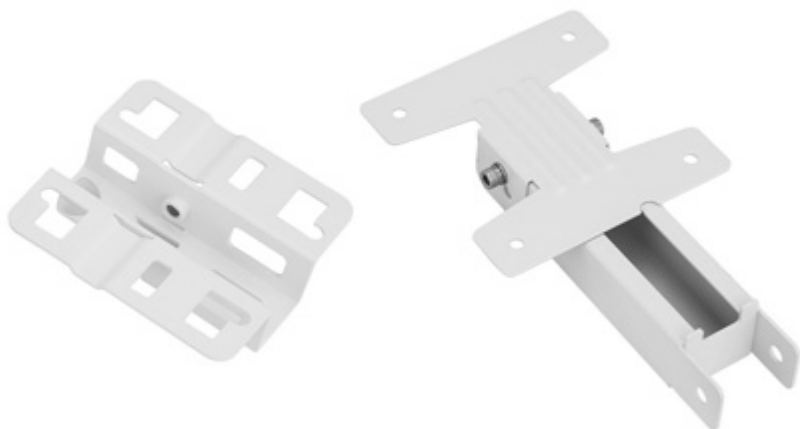
Mounting side view:



Device connectors:



Bracket view:



In the kit:



PACKAGE

Dimensions (L x W x H): 0x0x0 mm	Gross Weight: 0 kg
----------------------------------	--------------------

DELTA-OPTI Monika Matysiak; <https://www.delta.poznan.pl>
POL; 60-713 Poznań; Graniczna 10
e-mail: delta-opti@delta.poznan.pl; tel: +(48) 61 864 69 60