

Code: 12.8V/7AH/LIFEPO4-GC

BATTERY 12.8V/7AH/LIFEPO4-GC Green Cell

Net: 70.01 EUR Gross: 70.01 EUR

The lithium-iron-phosphate battery is characterized by exceptional durability, current efficiency and charging speed. It is also a more durable and lighter alternative to lead-acid batteries.

The batteries are equipped with the BMS battery management system, which not only controls the charging and discharging of the battery, but also the temperature, ensuring safety and extending the life to the maximum.

The LiFePO₄ batteries are designed to withstand even the harshest conditions and wherever the size and weight of the energy source are important. Example applications: electric cars, campers, scooters, electric boats, wheelchairs, lawn mowers, photovoltaic installations, UPS, alarm and fire protection systems, access control and monitoring systems, etc.



SPECIFICATION

| | |
|---------------------------|--|
| Battery capacity: | 7 Ah |
| Rated voltage: | 12.8 V |
| Battery charging current: | 5 A |
| Battery type: | LiFePO ₄ lithium-iron-phosphate battery |
| Battery lifetime: | > 10 years (> 2000 cycles @ 85 % DoD) |
| Connector: | T2 (F2) type - FASTON 250 |
| Weight: | 0.92 kg |
| Dimensions: | 151 x 65 x 95 mm |
| Manufacturer / Brand: | Green Cell |
| Guarantee: | 2 years |

PRESENTATION

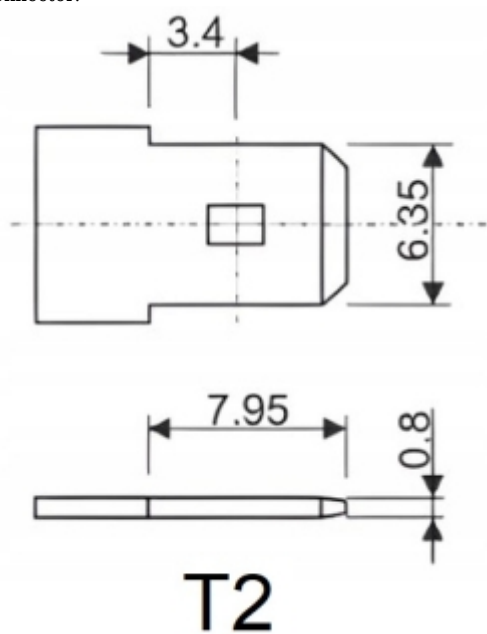
Connectors:



DELTA-OPTI Monika Matysiak; <https://www.delta.poznan.pl>
POL; 60-713 Poznań; Graniczna 10
e-mail: delta-opti@delta.poznan.pl; tel: +(48) 61 864 69 60



Connector:



PACKAGE

| | |
|----------------------------------|--------------------|
| Dimensions (L x W x H): 0x0x0 mm | Gross Weight: 0 kg |
|----------------------------------|--------------------|



DELTA-OPTI Monika Matysiak; <https://www.delta.poznan.pl>
POL; 60-713 Poznań; Graniczna 10
e-mail: delta-opti@delta.poznan.pl; tel: +(48) 61 864 69 60