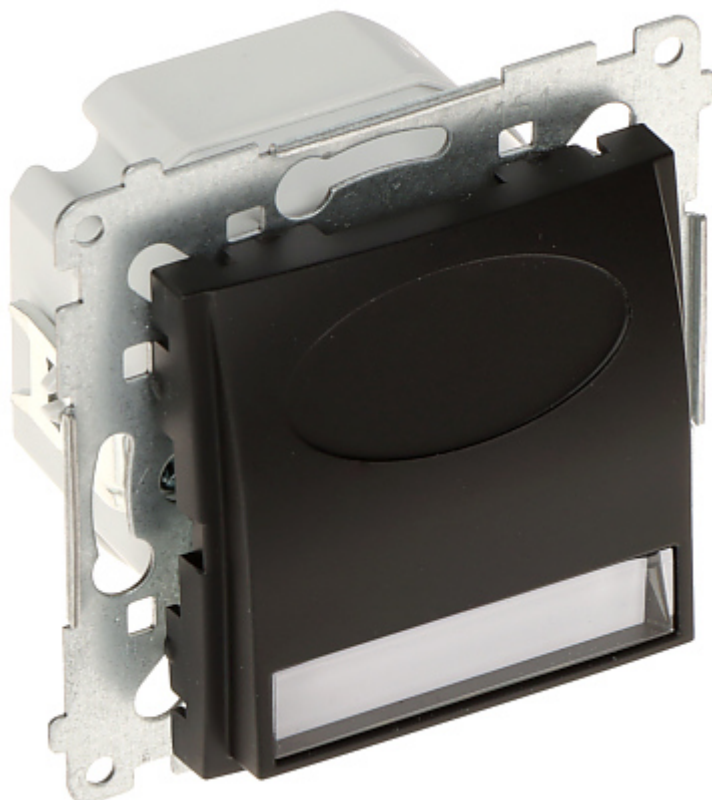


Code: DOSB.01/49-SIMON54

LED LUMINAIRE **DOSB.01/49-SIMON54** Premium

Net: **33.25 EUR** Gross: **33.25 EUR**

The DOSB.01/49-SIMON54 luminaire is equipped with 4 LEDs, designed to fix with frame plates of the Simon 54 Nature, Simon 54 Premium series.



SPECIFICATION

Rated voltage:	230 V AC, 50 Hz
Power connector:	screw terminals
Power consumption:	max. 0.9 W
Luminous flux:	17 lm
Light color:	Natural white, 4200 K
CRI:	≥ 82
LED lifetime:	~ 40000 h
Main features:	<ul style="list-style-type: none">• Claw or screw mounting• Installation in flush-mounted enclosures : Ø 60 mm, Ø 68 mm• Simon 54 Premium product series, for Nature, Premium frames
Housing:	Non-halogen plastic, PC
"Index of Protection":	IP20
Color:	Matt black
Weight:	0.1 kg
Dimensions:	<ul style="list-style-type: none">• 75 x 75 x 48 mm• 33 mm - mounting depth
Manufacturer / Brand:	KONTAKT Simon
Guarantee:	6 years

PRESENTATION



DELTA-OPTI Monika Matysiak; <https://www.delta.poznan.pl>
POL; 60-713 Poznań; Graniczna 10
e-mail: delta-opti@delta.poznan.pl; tel: +(48) 61 864 69 60

Rear view:



Cable terminals view:



PACKAGE

Dimensions (L x W x H): 0x0x0 mm	Gross Weight: 0 kg
----------------------------------	--------------------