

Code: IPC-HFW1239TL1-A-IL

IP CAMERA **IPC-HFW1239TL1-A-IL** Smart Dual Light - 1080p 2.8 mm DAHUA

Net: **51 428.57 HUF** Gross: **51 428.57 HUF**

IP camera with efficient H.264 / H.265 image compression algorithm for clear and smooth video streaming at maximal resolution of 1080p.

The device is equipped with Smart Dual Light technology, thanks to which the user has a choice of white light mode and IR (infrared) mode. When Smart Dual Light is active, the white light will turn on automatically only when an object is detected in the monitored area, which effectively improves the image quality.

PoE powering possibility, compatible with the 802.3af standard makes the device more universal and easier to install.



SPECIFICATION

| | |
|------------------------------------|---|
| Standard: | TCP/IP |
| Sensor: | 1/2.8 " Progressive Scan CMOS |
| Matrix size: | 2.1 Mpx |
| Resolution: | 1920 x 1080 - 1080p , 1280 x 960 - 1.3 Mpx , 1280 x 720 - 720p |
| Lens: | 2.8 mm |
| View angle: | 104 ° |
| Range of IR illumination: | 30 m |
| White light LED illuminator range: | 30 m |
| S/N ratio: | > 56 dB |
| Memory card slot: | — |
| Image compression method: | H.265+ / H.265 / H.264+ / H.264 / MJPEG |
| Alarm inputs / outputs: | — |
| Audio: | <ul style="list-style-type: none">• Microphone built-in• Audio output• Audio detection• Compliance with the AAC standard |
| Main stream frame rate: | 25 fps @ 1080p |
| Network interface: | 10/100 Base-T (RJ-45) |
| WEB Server: | Built-in |

DELTA-OPTI Monika Matysiak; <https://www.delta.poznan.pl>
POL; 60-713 Poznań; Graniczna 10
e-mail: delta-opti@delta.poznan.pl; tel: +(48) 61 864 69 60

| | |
|--------------------------------|---|
| Max. number of on-line users: | 6 |
| ONVIF: | ✓ |
| Mobile phones support: | Port no.: 37777 or access by a cloud (P2P) <ul style="list-style-type: none"> • Android: Free application DMSS • iOS (iPhone): Free application DMSS |
| Default IP address: | 192.168.1.108 |
| Default admin user / password: | admin / - The administrator password should be set at the first start |
| Web browser access ports: | 80, 37777 |
| PC client access ports: | 37777 |
| Mobile client access ports: | 37777 |
| Port ONVIF: | 80 |
| RTSP URL: | rtsp://admin:haslo@192.168.1.108:554/cam/realmonitor?channel=1&subtype=0 - Main stream rtsp://admin:haslo@192.168.1.108:554/cam/realmonitor?channel=1&subtype=1 - Sub stream |
| Main features: | <ul style="list-style-type: none"> • D-WDR - Wide Dynamic Range • 3D-DNR - Digital Noise Reduction • ROI - improve the quality of selected parts of image • BLC/HLC - Back Light / High Light Compensation • Possibility to change the resolution, quality and bit rate • Image rotation and mirror • Motion Detection - max. 4 configurable zones • Privacy zones - max. 4 • Intelligent image analysis : Human detection |
| Power supply: | <ul style="list-style-type: none"> • PoE (802.3af), • 12 V DC / 530 mA |
| Power consumption: | <ul style="list-style-type: none"> • ≤ 6.3 W @ 12 V DC • ≤ 7.8 W @ PoE |
| Housing: | Compact - Metal |
| Color: | White + Black |
| "Index of Protection": | IP67 |
| Vandal-proof: | — |
| Operation temp: | -40 °C ... 60 °C |
| Weight: | 0.31 kg |
| Dimensions: | 198 x 80 x 76 mm |
| Supported languages: | Polish, English, Czech, French, Spanish, Dutch, German, Russian, Portuguese, Romanian, Turkish, Ukrainian, Hungarian, Italian |
| Manufacturer / Brand: | DAHUA |
| Guarantee: | 3 years |

PRESENTATION



DELTA-OPTI Monika Matysiak; <https://www.delta.poznan.pl>
POL; 60-713 Poznań; Graniczna 10
e-mail: delta-opti@delta.poznan.pl; tel: +(48) 61 864 69 60



Side view:



Camera mounting side view:



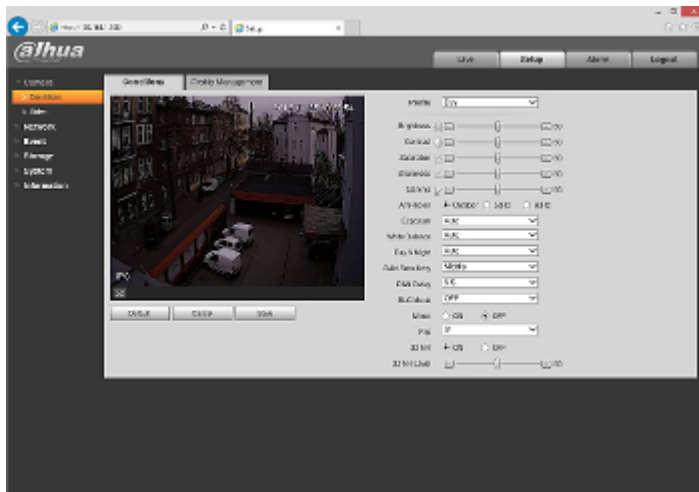
See how to initialize DAHUA cameras:

:

In the kit:



Example captures of device interface:



PACKAGE

| | |
|----------------------------------|--------------------|
| Dimensions (L x W x H): 0x0x0 mm | Gross Weight: 0 kg |
|----------------------------------|--------------------|