

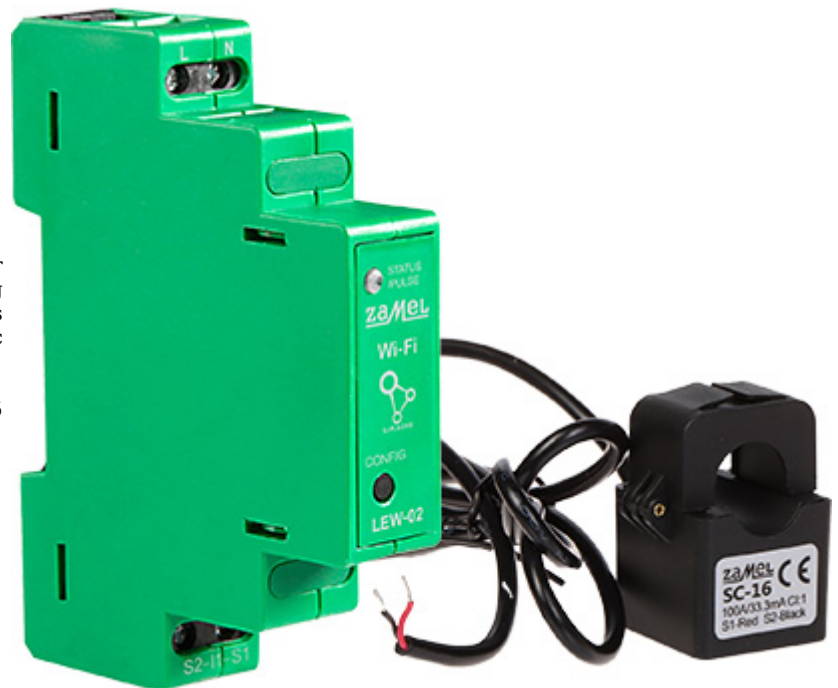
Code: LEW-02

ELECTRIC ENERGY MONITOR **LEW-02** ONE-PHASE ZAMEL

Net: 135.43 AUD Gross: 135.43 AUD

Single-phase electric energy monitor. This monitor performs two-way semi-indirect measurement making it suitable for use on both lighting and socket circuits of significant power or on single-phase photovoltaic installations.

The LEW-02 device is designed to mount on DIN TS-35 rail.



SPECIFICATION

Support:	SUPLA
Device type:	Electric Energy Monitor, One-phase
Wireless:	Wi-Fi, 2.4 GHz - IEEE 802.11 b/g/n
Rated voltage:	230 V AC, 50 / 60 Hz
Measurement unit:	kWh
Measurement method:	Semi-indirect measurement using an SC-16 current transformer
Current:	100 A - Max. current
Impulse frequency:	1000 imp/kWh
LCD display:	—
RS-485 ports:	—
Connectors type:	screw terminals max. 2.5 mm ²
Mobile phones support:	The SUPLA free application on Android The SUPLA free application on iOS
Measured parameters:	<ul style="list-style-type: none">• frequency• Voltage• Current• Nominal power• Reactive power• Apparent Power• Power factor• Phase angle• Active power consumed• Active power returned• Reactive power consumed• Reactive power returned

DELTA-OPTI Monika Matysiak; <https://www.delta.poznan.pl>
POL; 60-713 Poznań; Graniczna 10
e-mail: delta-opti@delta.poznan.pl; tel: +(48) 61 864 69 60

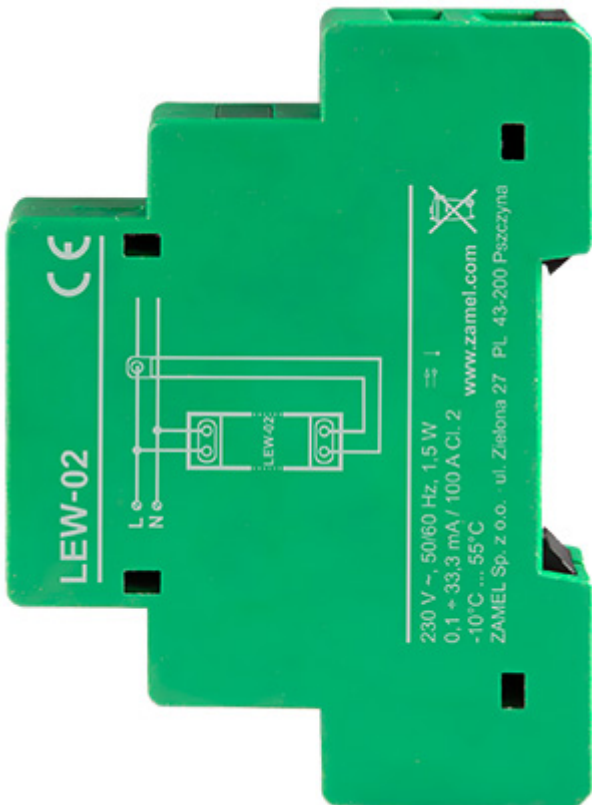
Main features:	<ul style="list-style-type: none"> • Control from a Web browser • Data export in "*.csv", "*.ods", "*.xlsx", "*.html" formats • Working with Home Assistant, Grafana, Zabbix, Power BI • Compliance with the MQTT protocol • Two-way monitor - also suitable for single-phase photovoltaic installations • Monitoring of voltage spikes • LED indication • Possibility to manually program scenarios from the built-in API
Housing:	Plastic, DIN, TS-35 rail mounting
"Index of Protection":	IP20
Operation temp:	-10 °C ... 55 °C
Width in 17.5 mm modules:	1
Weight:	0.05 kg
Dimensions:	90 x 66 x 17.5 mm
Manufacturer / Brand:	ZAMEL
Guarantee:	2 years

PRESENTATION





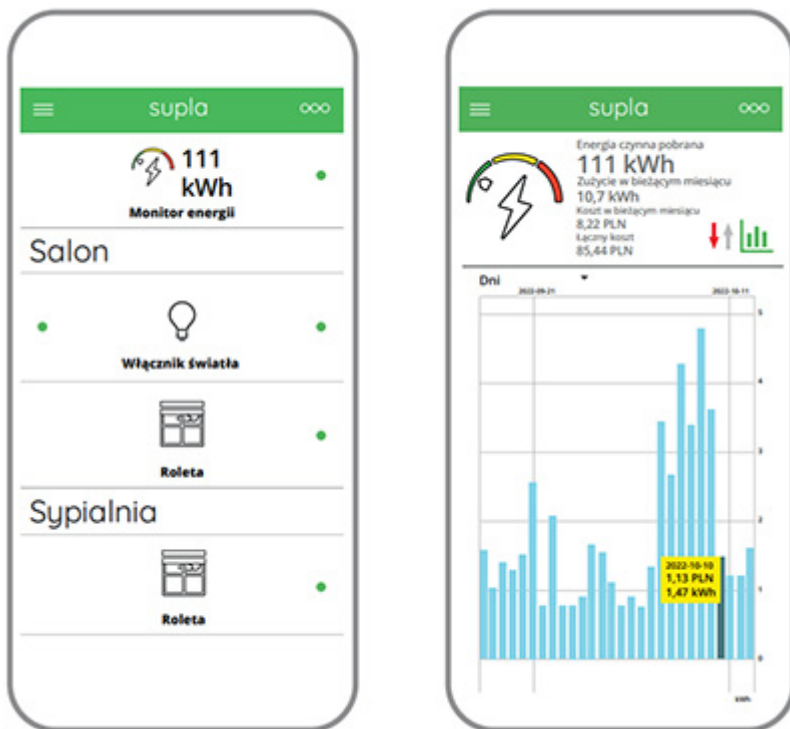
Side view:



In the kit:



Sample indications from the application:



PACKAGE

Dimensions (L x W x H): 0x0x0 mm	Gross Weight: 0 kg
----------------------------------	--------------------