

Code: MEW-01/ANT-1F

ELECTRIC ENERGY MONITOR **MEW-01/ANT-1F** ONE-PHASE ZAMEL

Net: 785.40 PLN Gross: 785.40 PLN

Three-phase electric energy monitor. The MEW-01/ANT-1F is a three-phase and two-way monitor, so it is suitable for monitoring both energy consumed and fed into the power grid.

The MEW-01/ANT-1F device is designed to mount on DIN TS-35 rail.

Attention! The device can operate as a three-phase monitor after purchasing additional transformers.



SPECIFICATION

Support:	SUPLA
Device type:	Electric Energy Monitor, One-phase
Wireless:	Wi-Fi, 2.4 GHz - IEEE 802.11 b/g/n
Rated voltage:	230 V / 400 V AC, 50 / 60 Hz
Voltage tolerance:	-20 % ... 15 %
Measurement unit:	kWh
Measurement method:	Semi-indirect measurement using an current transformer - 1 pcs included
Current:	100 A - Max. current
LCD display:	—
RS-485 ports:	—
Connectors type:	screw terminals max. 2.5 mm ²
Mobile phones support:	The SUPLA free application on Android The SUPLA free application on iOS
Measured parameters:	<ul style="list-style-type: none">• frequency• Voltage• Current• Nominal power• Reactive power• Apparent Power• Power factor• Phase angle• Active power consumed• Active power returned• Reactive power consumed• Reactive power returned

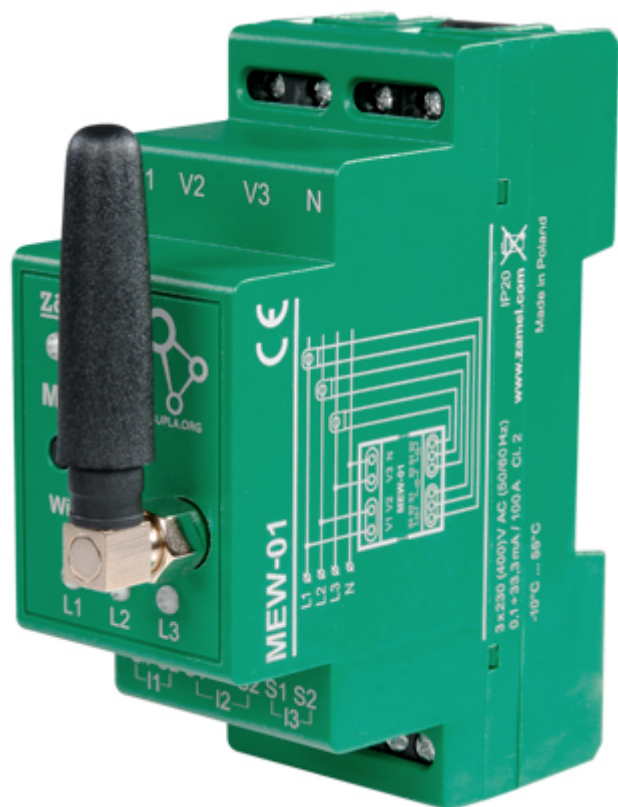
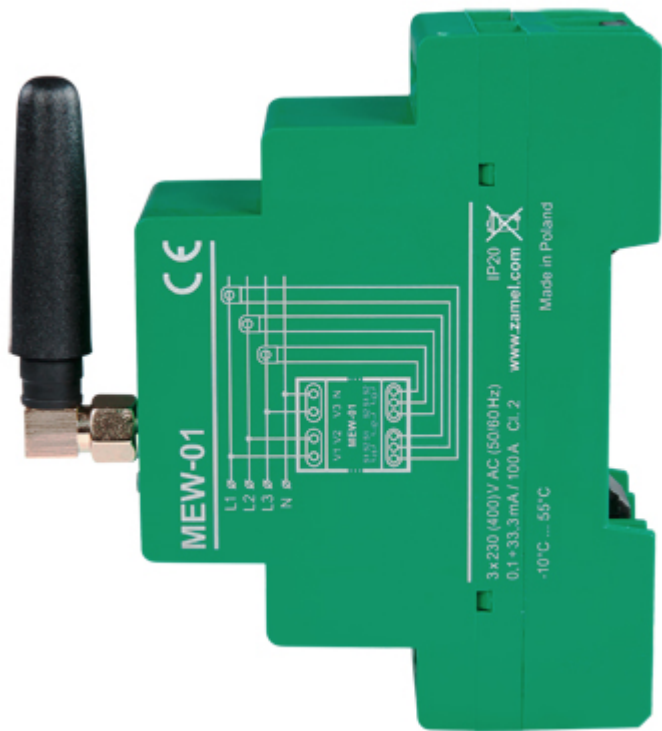
Main features:	<ul style="list-style-type: none"> • Control from a Web browser • Data export in "*.csv", "*.ods", "*.xlsx", "*.html" formats • Working with Home Assistant, Grafana, Zabbix, Power BI • Compliance with the MQTT protocol • Two-way monitor • Monitoring of voltage spikes • LED indication • Possibility to manually program scenarios from the built-in API • Possibility of integration with external software • The external SMA RP connector allows to move the antenna outside the distribution board
Housing:	Plastic, DIN, TS-35 rail mounting
"Index of Protection":	IP20
Operation temp:	-10 °C ... 55 °C
Width in 17.5 mm modules:	2
Weight:	0.100 kg
Dimensions:	90 x 84 x 35 mm
Manufacturer / Brand:	ZAMEL
Guarantee:	2 years

PRESENTATION

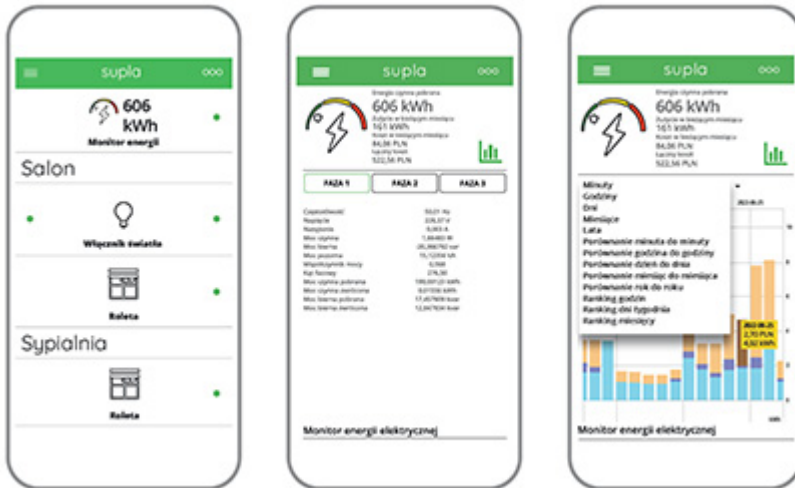
Front view:



Side view:



Sample indications from the application:



In the kit:



PACKAGE

Dimensions (L x W x H): 0x0x0 mm	Gross Weight: 0 kg
----------------------------------	--------------------