

# OUTDOOR SPEED DOME CAMERA **PH-37** STANDARD: PAL, ICR 550 TVL (COLOR) 620 TVL (B/W) 3.5 ... 129.5 mm

Net: **1 950.41 PLN** Gross: **1 950.41 PLN**

Outdoor Speed Dome camera equipped with Samsung module. The device has the following technical solutions.

OSD - On Screen Display menu enables to select and set many useful functions.

Sense-UP (Slow Shutter) - function enables good image quality in poor light conditions, even below the human eye sensitivity. It is made by slow shutter feature, what increases the time of exposure the sensor. The disadvantage of this solution is blurring of fast-moving objects.

The DNR (Digital Noise Reduction) function produces clear image, even at poor light conditions and high image gain parameters we will not see any image noise on the screen.

The VPS (Virtual Progressive Scan) technology - allows to reproduce a sharp progressive image. In depending on the monitoring scene function choose the right scanning method (interlace or progressive) to better display the moving objects. The edges of fast moving objects are not blurry.

DIS - Digital Image Stabilization function can effectively eliminate the camera oscillations (due to strong wind for example). It is very important for high zoom settings. It is very useful if camera is installed on the mast with oscillations risk.

WDR (SSDR) - Wide Dynamic Range function enables the correct exposure (not overexposed - not underexposed) of the image at extreme different illumination of the monitoring object.

Smart Zoom - turn on this function causes increase the camera optical zoom to the required value after motion detection of the object in the zone. This function is very useful when we want increase the zoom to view a human face or a car plate after motion detection.

ICR - The movable IR filter allows to perfect colors reproduction in daylight and wide gray-scale with high sharpness of the image at night mode. Camera works very well with external IR illuminators.

The big advantage of the camera is Intelligent Motion Detection system - which supports the operator of the system with following functionality: detect fixed objects, detect Moved objects, detection of passes the virtual area or virtual fence with objects monitoring (not to be confused with the tracking function).



## SPECIFICATION

Standard:	PAL
Sensor:	1/4 " Sony Super HAD CCD
Resolution:	550 TVL (color) 620 TVL (B/W)
Lens:	3.5 ... 129.5 mm (manufacturer data) 3.6 ... 83.1 mm (our tests result)
View angle:	54 ° ... 1.6 ° (manufacturer data) 53 ° ... 2.5 ° (our tests result)
Optical zoom:	x 37 (manufacturer data) x 23 (our tests result)
Digital zoom:	x 16
S/N ratio:	52 dB (AGC off)
Min. illumination:	0.7 Lux / F1.6 (color) 0.06 Lux / F1.6 (B/W) 0.0005 Lux / F1.6 (Sense-UP on)
PTZ control:	Via interface RS-485
Protocols:	Pelco-D, Pelco-P
Preset rotation speed:	max. 400 °/s



Rotation speed (manual control):	0.1 °/s ... 300 °/s 0.1 °/s (horizontal) ... 120 °/s (vertical)
Number of presets:	128
Route settings:	3 tours, each per 120 seconds
Horizontal scan:	—
Park action:	—
Auto patrol:	6 groups per 16 presets each - camera moving among max. 16 presets with previously set parking time and rotation speed
Camera connectors:	Video - socket BNC Power supply - terminals RS-485 - terminals
Video output:	1 Vpp / 75 Ω
Image stabilization:	✓
Main features:	<ul style="list-style-type: none"> <li>• ICR - Movable InfraRed filter</li> <li>• WDR - Wide Dynamic Range</li> <li>• DNR - Digital Noise Reduction</li> <li>• 256 x Sense-UP - (Slow Shutter) - Increase the sensor sensitivity</li> <li>• HLC - High Light Compensation (spot)</li> <li>• AGC - Automatic Gain Control</li> <li>• Day/Night mode (color/b&amp;w/auto)</li> <li>• BLC - configurable Back Light Compensation</li> <li>• AutoFocus, AutoIris</li> <li>• WB - White Balance (ATW/AWB/manual/indoor/outdoor)</li> <li>• 8 motion detection zones</li> <li>• 4 Configurable Privacy Zones</li> <li>• Smart Zoom - Auto zoom in case of detect the motion</li> <li>• EZOOM - Digital Zoom off</li> <li>• Auto Flip - auto-rotates the camera during "tilt" type moving</li> <li>• Mirror - Mirror image</li> <li>• VPS - better display the moving objects. The edges of fast moving objects are not blurry</li> <li>• Intelligent Motion Detection system - detects fixed objects, detects Moved objects, detection of passes the virtual area or virtual fence with objects monitoring</li> </ul>
Power consumption:	35 W
Power supply:	~ 24 V AC / 2 A (power adapter included)
"Index of Protection":	IP66
Operation temp:	-20 °C ... 60 °C
Weight:	3.84 kg
Dimensions:	Camera Ø 225 x 330 mm Bracket 244 x 160 x 110 mm
Supported languages:	English
Guarantee:	2 years

## PRESENTATION

Camera view after remove the dome cover (configuration switch visible):

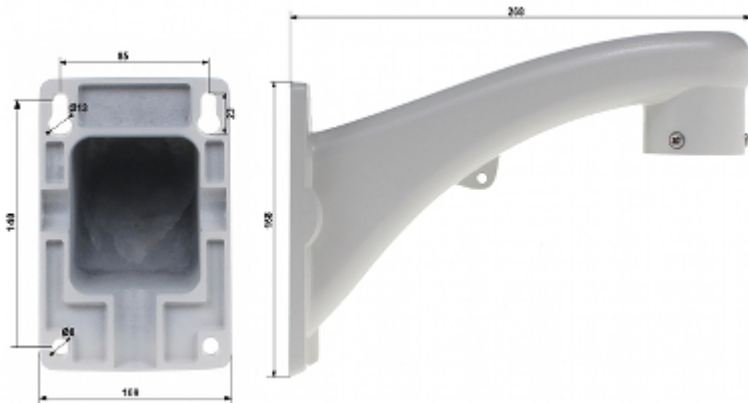




In the kit:



Bracket dimensions:



Comparison the dimensions of the following cameras: PH-23, PH-37, PH-10H:



## OUR TESTS

Camera image at artificial illumination (about 30Lux):



Camera image at direct strong light opposite to camera:



Camera image at night conditions with external IR illuminator on:



Camera image at night conditions, at different illumination values show below:

1 LUX:



0.1 LUX:



0.01 LUX:



0.001 LUX:



## OUR OPINIONS



- The sensational Samsung camera module.
- Camera has built-in many very useful functions, such as: effective Digital Image Stabilization, high increase the sensitivity by Digital Slow Shutter, Digital Noise Reduction, Wide Dynamic Range, High Light Compensation, Intelligent Motion Detection, Virtual Progressive Scan..

## PACKAGE

Dimensions (L x W x H): 0x0x0 mm	Gross Weight: 0 kg
----------------------------------	--------------------

