

Code: M-10T

TELESCOPIC MAST **M-10T** 10 m

Net: **188.00 EUR** Gross: **188.00 EUR**



The M-10T is perfect solution for everybody, who wants to place the mast without any transport and installation team help. Its construction allows to quick build up the mast, keeps the proper stiffness and load.

The set includes all accessories need to build up the mast.

SPECIFICATION

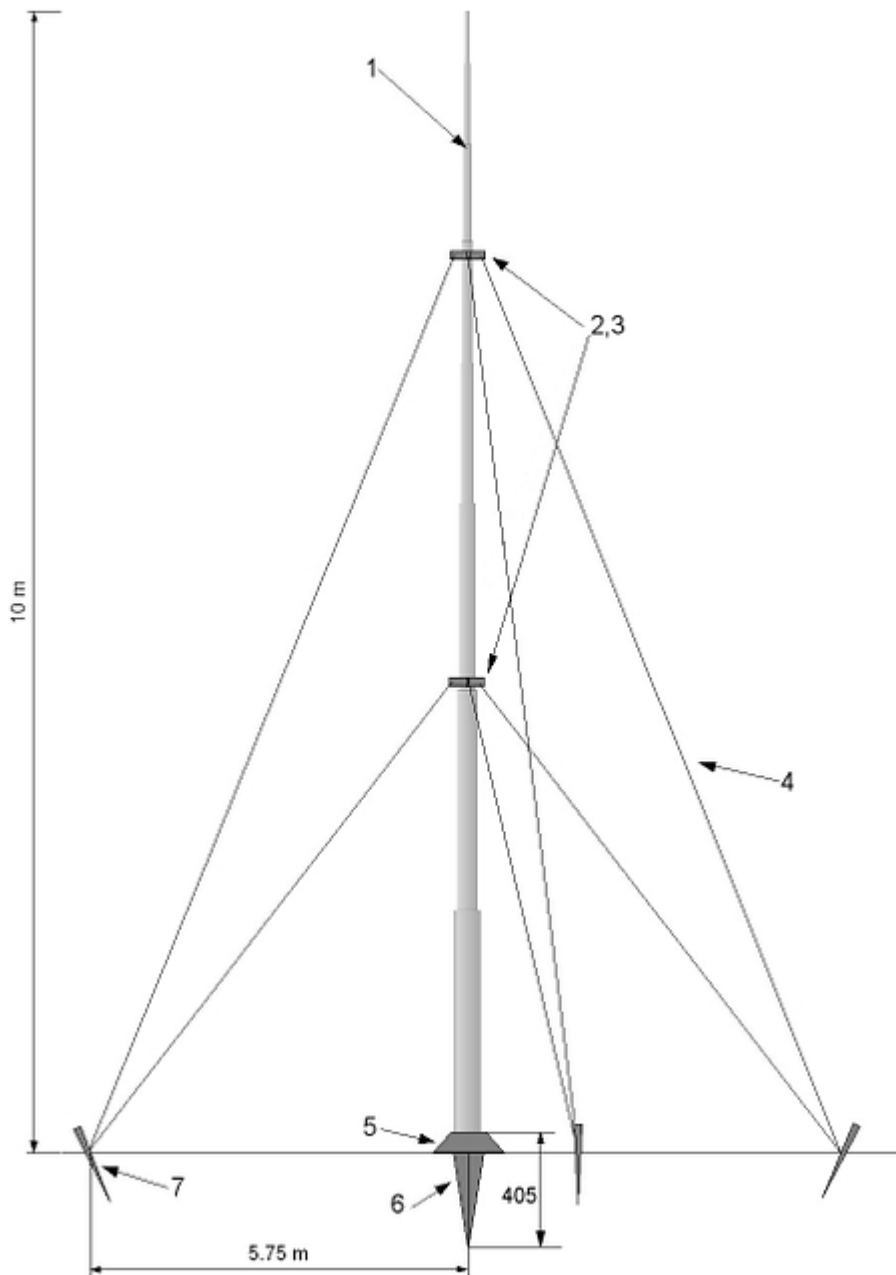
Material:	<ul style="list-style-type: none">• Mast : Aluminum• Other elements Steel
Height:	10 m
Transport height:	1.5 m
Wall thickness:	2 mm
Number of sections:	8 - The number refers to the number of sections that make up the mast
The diameters of the particular retractable sections:	Ø 60, 55, 50, 45, 40, 35, 30, 25 mm
Dimensions of the ground fastening element:	Ø 70 x 405 mm
Radius (distance) of the anchor relative to the base:	5.75 m
Weight:	9 kg Mast
Guarantee:	2 years

PRESENTATION

Schematic diagram:



DELTA-OPTI Monika Matysiak; <https://www.delta.poznan.pl>
POL; 60-713 Poznań; Graniczna 10
e-mail: delta-opti@delta.poznan.pl; tel: +(48) 61 864 69 60

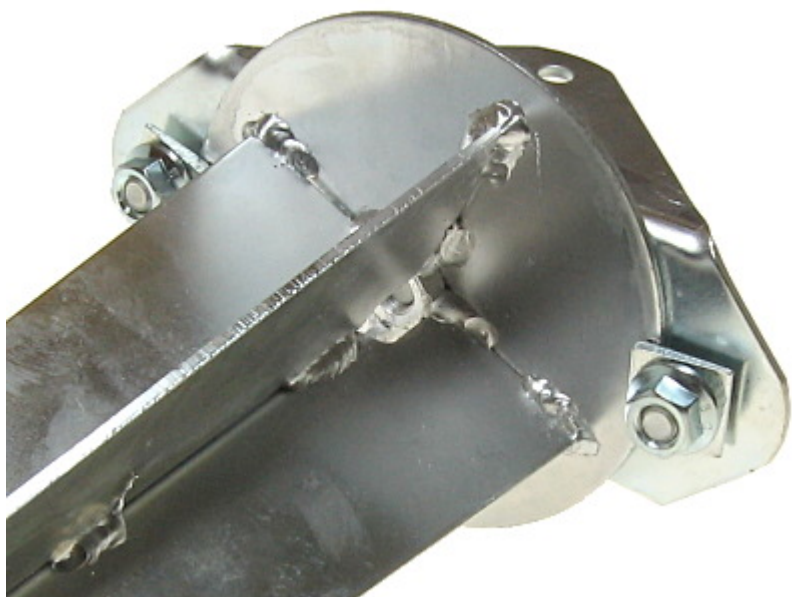


1. Mast
2. The top of the mast
3. Guy-wires mount
4. Guy-wires
5. Guy-wires
6. Mast base
7. The tip driven into the ground
8. Anchors

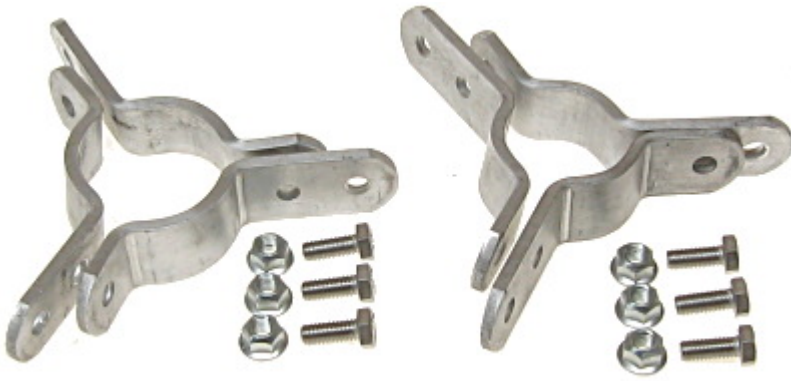








In the kit:









PACKAGE

Dimensions (L x W x H): 0x0x0 mm	Gross Weight: 0 kg
----------------------------------	--------------------

