

Code: VC-70BQ

## CAMERA VC-70BQ 700 TVL

Net: 26.00 GBP Gross: 26.00 GBP

Camera equipped with perfect very high resolution Sony sensor and Sony Effio Digital Image Processor. It is equipped with OSD menu controller, which allows to set and change the camera parameters without the need to remove or move the camera.

Due to its small dimensions camera is perfect solution for discreet monitoring in shops, shopping centers, schools, etc.



### SPECIFICATION

|                          |  |
|--------------------------|--|
| Standard:                | PAL  |
| Sensor:                  | 1/3 " Sony Super HAD II CCD  |
| Digital Image Processor: | DSP Sony Effio-E   |
| Lens mount:              | C/CS   |
| Resolution:              | 700 TVL  |
| Min. illumination:       | 0.02 Lux   |
| Video output:            | 1 Vpp / 75 Ω   |
| Power supply:            | 12 V DC / 120 mA   |
| Main features:           | <ul style="list-style-type: none"><li>• WDR - Wide Dynamic Range</li><li>• BLC - configurable Back Light Compensation</li><li>• DIS - Digital Image Stabilization</li><li>• EZOOM - Digital Zoom off</li><li>• Motion Detection</li><li>• Configurable Privacy Zones</li><li>• Auto Gain Control</li><li>• Mirror - Mirror image</li><li>• Day/Night mode (color/b&amp;w/auto)</li><li>• Sharpness - sharper image outlines</li><li>• HLC - High Light Compensation (spot)</li><li>• DNR - Digital Noise Reduction</li></ul> |
| OSD menu:                | ✓  |
| Color:                   | Black, Silver  |
| Operation temp:          | -20 °C ... 55 °C   |
| Weight:                  | 0.14 kg  |
| Dimensions:              | 65 x 40 x 40 mm  |
| Supported languages:     | English, Chinese, Spanish, French, German, Portuguese, Russian   |
| Guarantee:               | 2 years  |

DELTA-OPTI Monika Matysiak; <https://www.delta.poznan.pl>  
POL; 60-713 Poznań; Graniczna 10  
e-mail: delta-opti@delta.poznan.pl; tel: +(48) 61 864 69 60

## PRESENTATION

Camera is very small:



Rear view:



## OUR TESTS

Camera image at artificial illumination (about 30Lux):



Camera image at direct strong light opposite to camera:



DELTA-OPTI Monika Matysiak; <https://www.delta.poznan.pl>  
POL; 60-713 Poznań; Graniczna 10  
e-mail: [delta-opti@delta.poznan.pl](mailto:delta-opti@delta.poznan.pl); tel: +(48) 61 864 69 60



Camera image at night conditions, at different illumination values show below:

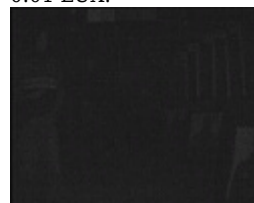
1 LUX:



0.1 LUX:



0.01 LUX:



## OUR OPINIONS



- Very small camera dimensions.
- Low current consumption.
- Extended OSD menu with useful functions.

## PACKAGE

|                                  |                    |
|----------------------------------|--------------------|
| Dimensions (L x W x H): 0x0x0 mm | Gross Weight: 0 kg |
|----------------------------------|--------------------|