

Code: CF08-2812/4

CAMERA **CF08-2812/4** STANDARD: PAL, 800 TVL, 960H 2.8 ... 12 mm

Net: **202.43 PLN** Gross: **202.43 PLN**

The CF08-2812/4 camera is equipped with very high resolution HDIS sensor.

Due to above, this camera is perfect solution for surveillance systems requiring persons or vehicles recognition, for example at places like: buildings entrance, lobbies, lounges, etc. The movable ICR filter allows to good colors reproduction at daylight and better gray scale during night conditions.

The built-in vari-focal lens allows to set very wide range of camera view angles. The range of IR illumination according to the manufacturer data, depends on outer conditions (visibility - air transparency, environment, wall colors ie. scene reflectance).



SPECIFICATION

Standard:	PAL
Sensor:	1/3 " HDIS 139+8510
Resolution:	800 TVL, 960H
Lens:	2.8 ... 12 mm
View angle:	81 ° ... 23 ° (manufacturer data) 83 ° ... 31 ° (our tests result)
Range of IR illumination:	40 m
S/N ratio:	> 48 dB
Video output:	1 Vpp / 75 Ω
Power supply:	12 V / 450 mA
Main features:	<ul style="list-style-type: none">• ICR - Movable InfraRed filter• AGC - Automatic Gain Control• BLC - Back Light Compensation• Auto White Balance• Day/night mode
OSD menu:	—
Housing:	Metal
Color:	Dark graphite
"Index of Protection":	IP66
Operation temp:	-20 °C ... 50 °C
Weight:	0.75 kg
Dimensions:	205 x 86 x 175 mm

DELTA-OPTI Monika Matysiak; <https://www.delta.poznan.pl>
POL; 60-713 Poznań; Graniczna 10
e-mail: delta-opti@delta.poznan.pl; tel: +(48) 61 864 69 60

Guarantee:

2 years

PRESENTATION

Front view:



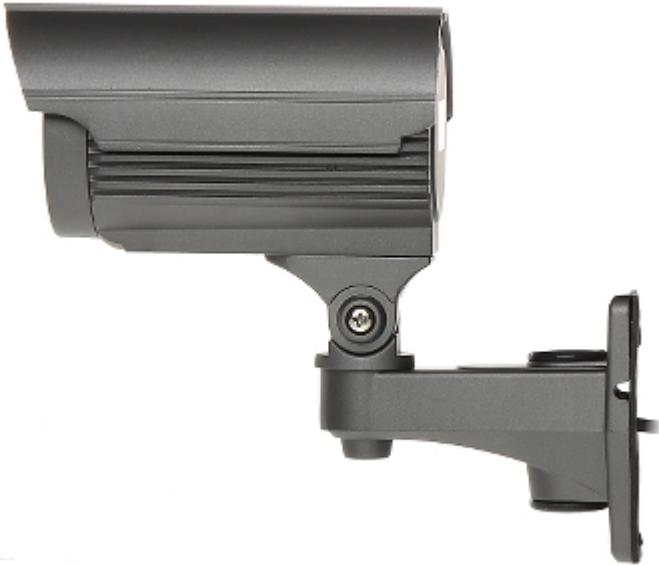
Bottom view:



Side view:



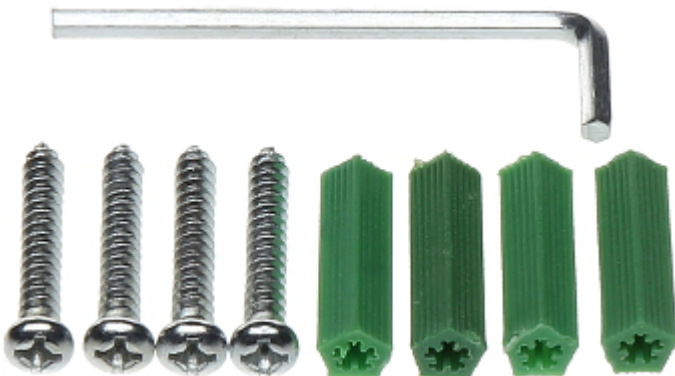
DELTA-OPTI Monika Matysiak; <https://www.delta.poznan.pl>
POL; 60-713 Poznań; Graniczna 10
e-mail: delta-opti@delta.poznan.pl; tel: +(48) 61 864 69 60



Mounting side view:



In the kit:

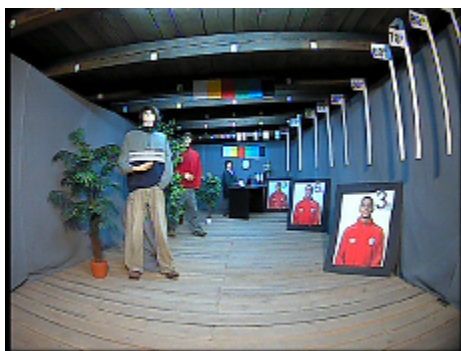


OUR TESTS

Camera image at artificial illumination (about 30Lux):



DELTA-OPTI Monika Matysiak; <https://www.delta.poznan.pl>
POL; 60-713 Poznań; Graniczna 10
e-mail: delta-opti@delta.poznan.pl; tel: +(48) 61 864 69 60



Camera image at night conditions with internal built-in IR illuminator on:



Camera image at direct strong light opposite to camera:



PACKAGE

Dimensions (L x W x H): 0x0x0 mm	Gross Weight: 0 kg
----------------------------------	--------------------