

Code: OM1-SM

# SINGLE-MODE MEDIA CONVERTER **OM1-SM** TXRX SET

Net: **110.40 PLN** Gross: **110.40 PLN**

The OM1-SM converter allows to change the data stream transmission media from standard STP/UTP cable to single-mode fiber cable.

The device is equipped with SC connector ensuring reliable connections. Optical signal is transmitted and received in the II i III transmission window of 1310/1550 nm.



## SPECIFICATION

Optical connector type:	SC / PC
Number of fibers:	1 pcs
Transmission range:	25 km - Single-mode fiber
Supported standards:	IEEE 802.3, IEEE 802.3u
Port LAN:	(RJ-45. UTP/STP)
Transmission speed:	10/100 Mbps
Optical wavelength:	1550 / 1310 nm
Main features:	<ul style="list-style-type: none"><li>• MDI/MDI-X auto detection feature - auto detecting the data transmission mode</li><li>• Auto detection of the bit rate</li><li>• Bi-directional transmission via single fiber</li><li>• LED indicators showing operating status</li><li>• Wavelength-Division Multiplexing technology WDM (Tx 1550nm / Rx 1310nm)</li></ul>
Power supply:	5 V DC / 1 A (power adapter included)
Operation temp:	-10 °C ... 50 °C
Permissible relative humidity:	5 % ... 95 %
Weight:	0.18 kg
Dimensions:	95 x 72 x 27 mm
Guarantee:	2 years

## PRESENTATION

Front view:



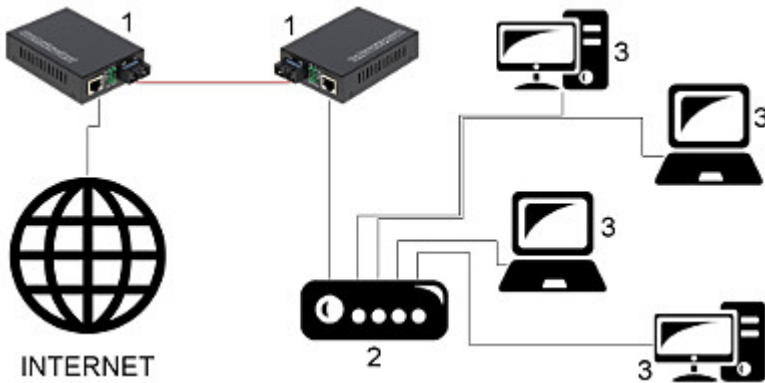
Rear view:



DELTA-OPTI Monika Matysiak; <https://www.delta.poznan.pl>  
POL; 60-713 Poznań; Graniczna 10  
e-mail: [delta-opti@delta.poznan.pl](mailto:delta-opti@delta.poznan.pl); tel: +(48) 61 864 69 60



Example of device using:



- 1. CONVERTER
  - 2. Switch
  - 3. Computer
- In the kit:



**PACKAGE**

Dimensions (L x W x H): 0x0x0 mm	Gross Weight: 0 kg
----------------------------------	--------------------