

Code: MLT-POD

SPACER **MLT-POD** FOR PROXIMITY CARD READER SATEL

Net: 14.00 PLN Gross: 14.00 PLN

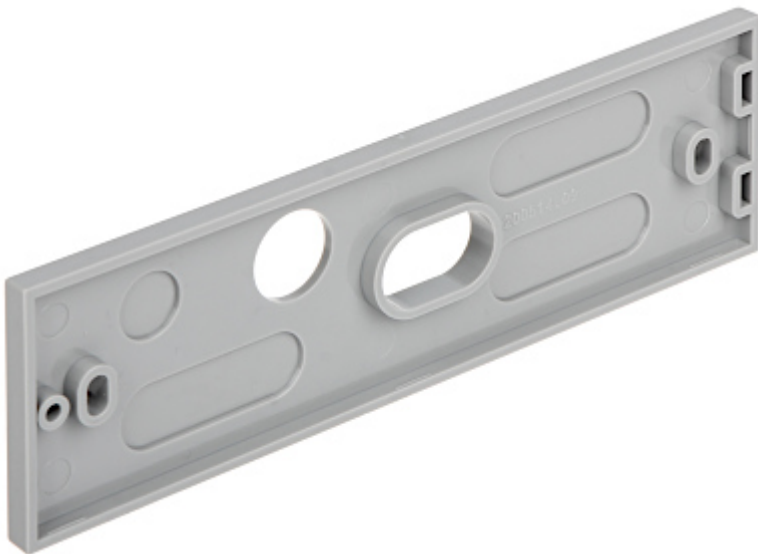
The MLT-POD spacer is designed to increase the distance between the reader surface and the ground on which it is mounted. When the RFID card reader is mounted on a metal surface, the use of a spacer increases the reading range.



SPECIFICATION

Material:	Plastic
Application:	INT-SCR-BL, CZ-EMM3, CZ-EMM4, PK-01, ACCO-SCR-BG
Color:	Gray
Weight:	0.20 kg
Dimensions:	157 x 47 x 8 mm
Manufacturer / Brand:	SATEL
Guarantee:	2 years

PRESENTATION



DELTA-OPTI Monika Matysiak; <https://www.delta.poznan.pl>
POL; 60-713 Poznań; Graniczna 10
e-mail: delta-opti@delta.poznan.pl; tel: +(48) 61 864 69 60



PACKAGE

Dimensions (L x W x H): 0x0x0 mm	Gross Weight: 0 kg
----------------------------------	--------------------

