

Code: ESP8266

# PROGRAMMER **ESP8266** FOR MODULES OF THE ESP12 SERIES

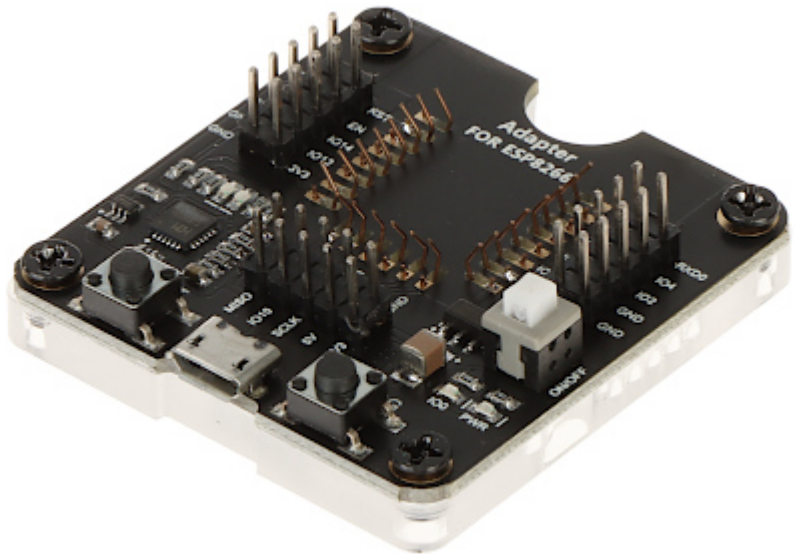
Net: **57.60 PLN** Gross: **57.60 PLN**

The ESP8266 programmer is a device that mediates data exchange between the computer (USB port) and modules based on the ESP8266 chip. The programmer enables, for example, saving your own program in the memory of the connected controller, or communication between the computer and the module via the USB port.

The interface is equipped with a dedicated place for the board, surrounded by spring pins. This solution ensures proper connection of the module pins with the goldpin connectors, at the same time allowing for secure, temporary assembly of the programmed module. An additional facilitation in programming and testing the module are the function buttons, thanks to which there is no need to manually short-circuit the appropriate pins of the module.

The device is fully compatible with commonly used programming environments: Arduino IDE, ESP8266Flasher and Espressif FLASH\_DOWNLOAD\_TOOLS. Depending on the operating system used, installation of appropriate drivers may be required for the proper operation of the interface.

The programmer is powered from the USB port and does not require an external power supply.



## SPECIFICATION

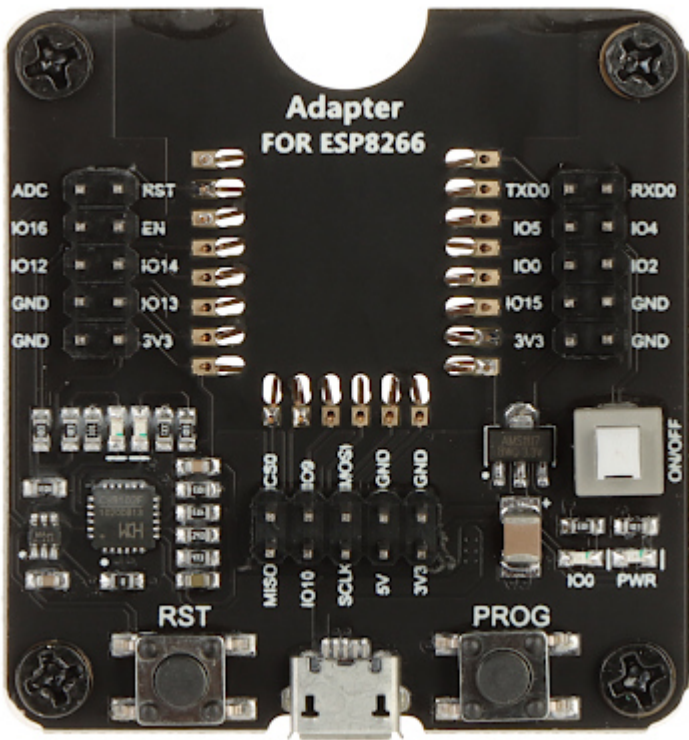
Compatibility:	ESP-12F, ESP-12E, ESP-12S, ESP-07 ESP-07S
Connectors type:	<ul style="list-style-type: none"><li>• 1 x micro USB socket,</li><li>• Place of temporary installation of the board with spring pins (dedicated to ESP-12E/12F/12S),</li><li>• 30 x goldpin plug - Leading out the pins</li></ul>
Output signal level:	3.3 V
Power output:	3.3 V, 5 V
Main features:	<ul style="list-style-type: none"><li>• ON/OFF button,</li><li>• RESET button,</li><li>• PROGRAM button</li></ul>
Power supply:	5 V - from USB port
Weight:	0.02 kg
Dimensions:	50 x 47 x 15 mm
Guarantee:	2 years

## PRESENTATION

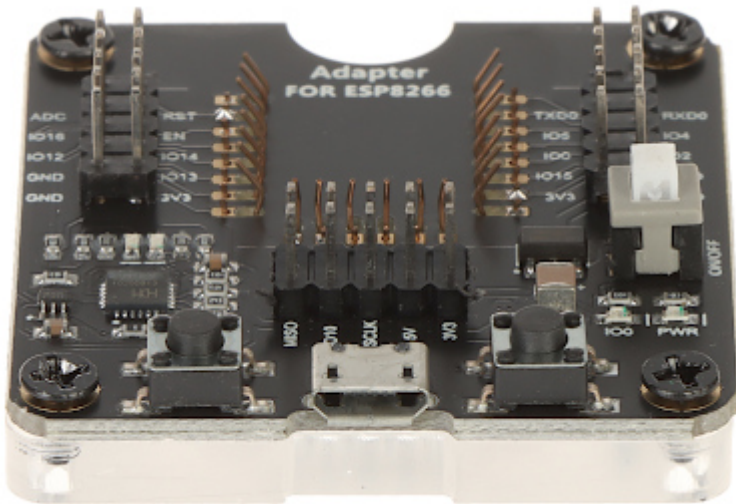
Top view:



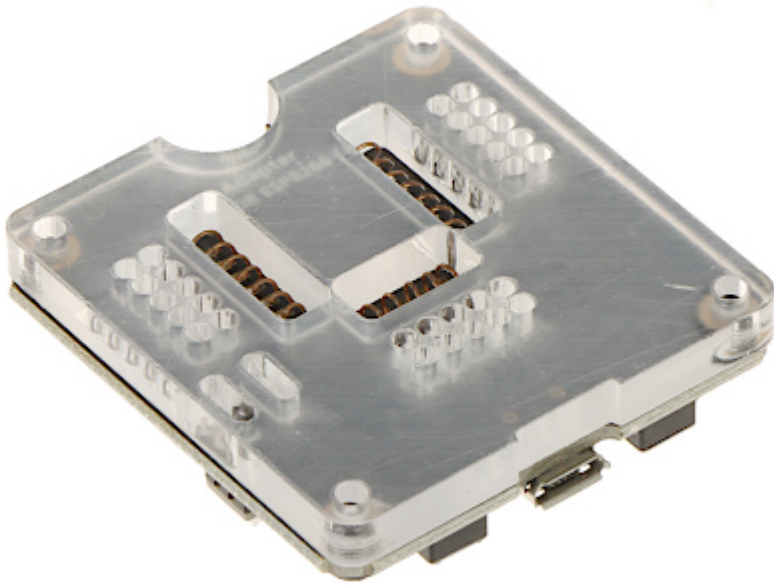
DELTA-OPTI Monika Matysiak; <https://www.delta.poznan.pl>  
POL; 60-713 Poznań; Graniczna 10  
e-mail: [delta-opti@delta.poznan.pl](mailto:delta-opti@delta.poznan.pl); tel: +(48) 61 864 69 60



USB connector:



Bottom view:



**PACKAGE**

Dimensions (L x W x H): 0x0x0 mm	Gross Weight: 0 kg
----------------------------------	--------------------

