

Code: CD65-2812

CAMERA **CD65-2812** STANDARD: PAL, 650 TVL 2.8 ... 12 mm

Net: **36.71 EUR** Gross: **36.71 EUR**

The CD65-2812 camera is equipped with very high resolution Sony sensor. Due to above, this camera is perfect solution for surveillance systems requiring persons or vehicles recognition, for example at places like: buildings entrance, lobbies, entry gates, lounges, etc. Housing construction allows to ceiling and wall mounting (the image is right oriented in both cases).

OSD menu controller is placed on the cable.

For indoor use.



SPECIFICATION

Standard:	PAL
Sensor:	1/3 " Sony CCD
Resolution:	650 TVL
Lens:	2.8 ... 12 mm
View angle:	81 ° ... 23 ° (manufacturer data) 88 ° ... 32 ° (our tests result)
Min. illumination:	0.001 Lux
Video output:	1 Vpp / 75 Ω
S/N ratio:	> 52 dB
Main features:	<ul style="list-style-type: none">• WDR - Wide Dynamic Range• BLC - configurable Back Light Compensation• DIS - Digital Image Stabilization• EZOOM - Digital Zoom off• Motion Detection• Configurable Privacy Zones• Auto Gain Control• Mirror - Mirror image• Day/Night mode (color/b&w/auto)• Sharpness - sharper image outlines• HLC - High Light Compensation (spot)• DNR - Digital Noise Reduction
OSD menu:	✓
Power supply:	12 V / 90 mA
Housing:	Dome - Plastic
Color:	White
Application:	The camera is designed for indoor use, due to the possibility of steam condensation.
Operation temp:	-10 °C ... 50 °C
Weight:	0.27 kg
Dimensions:	Ø 128 x 91 mm

DELTA-OPTI Monika Matysiak; <https://www.delta.poznan.pl>
POL; 60-713 Poznań; Graniczna 10
e-mail: delta-opti@delta.poznan.pl; tel: +(48) 61 864 69 60

Guarantee:

2 years

PRESENTATION

Camera view after remove the Dome cover:



Mounting side view:

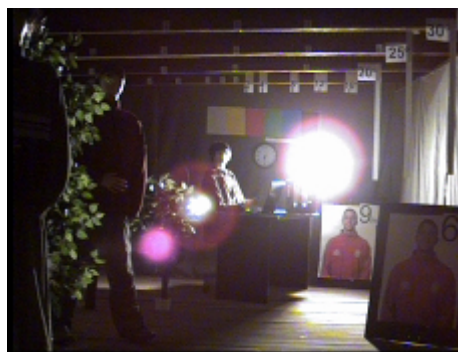


OUR TESTS

Camera image at artificial illumination (about 30Lux):

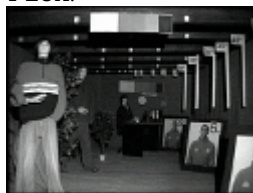


Camera image at direct strong light opposite to camera:

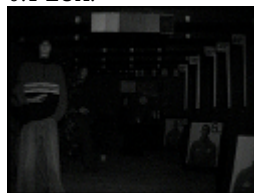


Camera image at night conditions, at different illumination values show below:

1 LUX:



0.1 LUX:



0.01 LUX:



PACKAGE

Dimensions (L x W x H): 0x0x0 mm	Gross Weight: 0 kg
----------------------------------	--------------------