

Code: TPC-M60-B18-G

# HANDHELD THERMAL MONOCULAR CAMERA **TPC-M60-B18-G** 18 mm DAHUA

Net: **2 186.11 EUR** Gross: **2 186.11 EUR**

Thermal Monocular Camera is a handheld thermal imaging camera, intended primarily for the observation of animals in their natural environments, as well as a supporting device in rescue, physical protection and hunting.

The great advantage of the thermal monocular camera is the built-in fire detection mode, which allows you to instantly locate the initial stage of a fire. Thanks to the use of a high-performance processor, the thermal monocular camera also allows you to measure the distance from the observed object (rangefinder function) using intelligent video analysis. The use of the Wi-Fi module allows for integration with the mobile application, which significantly affects the comfort of use. The device uses a built-in Li-Ion battery, which guarantees operation up to 9 hours on a single charge.



## SPECIFICATION

Sensor:	Uncooled VOx microbolometer
Matrix size:	640 x 512 px
Pixel pitch:	12 µm
Display:	0.4 " LCOS, 1280 x 960 px
Thermal sensitivity (NETD):	≤ 50 mK @ F1.0
Spectral range:	8 µm ... 14 µm
Color palettes:	4
Lens:	18 mm
View angle:	24 °
Video output:	CVBS
Memory card slot:	Micro SD memory cards up to 256GB support (possible local recording)
Image compression method:	H.265
Network interface:	Wi-Fi
Mobile phones support:	<ul style="list-style-type: none"><li>• Android: Free application <a href="#">DH Thermal</a></li><li>• iOS (iPhone): Free application <a href="#">DH Thermal</a></li></ul>
DRI Detection Distance:	<ul style="list-style-type: none"><li>• Vehicle / human detection : 2000 m / 750 m</li><li>• Vehicle / human recognition : 500 m / 192 m</li><li>• Vehicle / human identification : 250 m / 96 m</li></ul>

Main features:	<ul style="list-style-type: none"> <li>• Built-in fire detection mode,</li> <li>• Measure the distance from an object - rangefinder function - determining the approximate distance to the observed object based on intelligent image analysis,</li> <li>• Track the hottest or coldest spots in an image,</li> <li>• Built-in laser pointer,</li> <li>• Possibility to connect to an external monitor via the CVBS port - MMCX-J plug,</li> <li>• 4 color palettes: IRON RED - mode for long-term observations, especially at night; RAINBOW - quick target identification thanks to a wide range of colors; WHITE HOT - for observing active, moving objects; ALARM - instant detection of high temperature areas, e.g. fire</li> <li>• Hotspot Wi-Fi</li> <li>• The ability to take photos, video recordings and configure parameters using a mobile application and a mobile phone,</li> <li>• micro USB connector (battery charging)</li> <li>• D-ZOOM - Digital Zoom : 2x, 3x, 4x</li> </ul>
Battery operation time:	≤ 9 h
Typical battery charge time:	< 3 h
Power supply:	<ul style="list-style-type: none"> <li>• Li-Ion battery,</li> <li>• 5 V DC / 450 mA (power adapter included)</li> </ul>
Power consumption:	< 2.2 W
Housing:	Compact - Plastic + Rubber
Color:	Black + Gray
Operation temp:	-20 °C ... 55 °C
"Index of Protection":	IP67
Weight:	0.45 kg
Dimensions:	193.4 x 66.4 x 68.7 mm
Supported languages:	English
Manufacturer / Brand:	DAHUA
Guarantee:	<b>3 years</b>

## PRESENTATION



Front view:



Top view:



Side view:



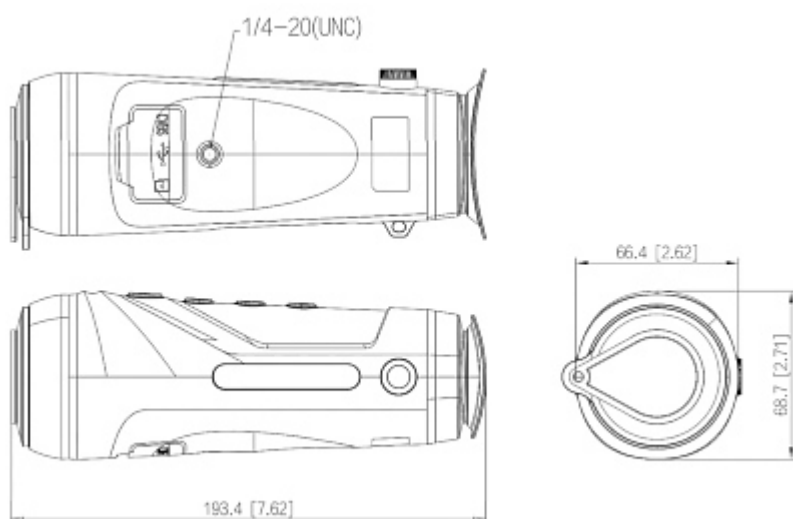
Bottom view:



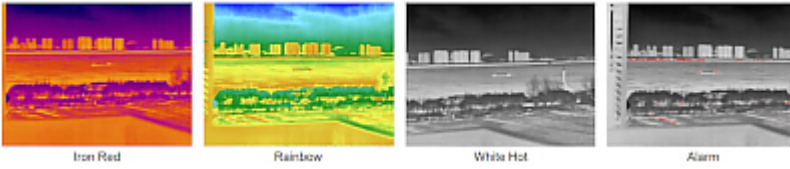
Viewfinder built-in:



Dimensions:



Color palettes:



Measure the distance from an object - rangefinder function:



Device is secured by handy case:



In the kit:

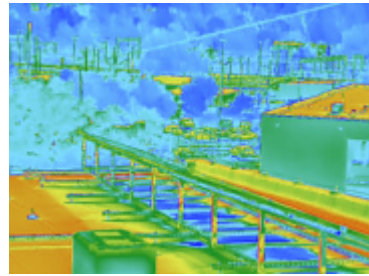
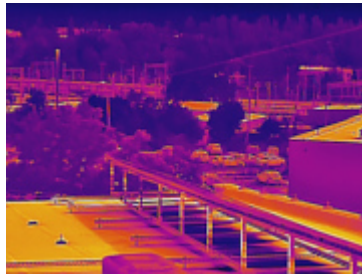
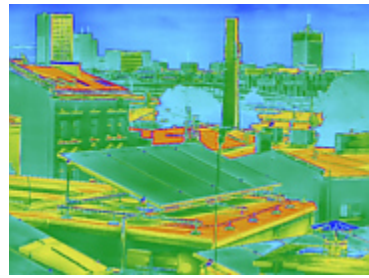
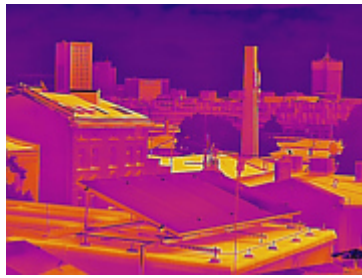


## OUR TESTS

Our tests:

DELTA-OPTI Monika Matysiak; <https://www.delta.poznan.pl>  
 POL; 60-713 Poznań; Graniczna 10  
 e-mail: delta-opti@delta.poznan.pl; tel: +(48) 61 864 69 60





**PACKAGE**

Dimensions (L x W x H): 0x0x0 mm	Gross Weight: 0 kg
----------------------------------	--------------------



DELTA-OPTI Monika Matysiak; <https://www.delta.poznan.pl>  
POL; 60-713 Poznań; Graniczna 10  
e-mail: delta-opti@delta.poznan.pl; tel: +(48) 61 864 69 60