

Code: GEMINI-7AD-12W

VANDALPROOF CAMERA **GEMINI-7AD-12W** STANDARD: PAL, 700 TVL 2.8 mm

Net: **126.02 PLN** Gross: **126.02 PLN**

Small sizes vandal-proof camera in metal housing.

Due to detailed image and wide view angle this camera is perfect solution for surveillance systems requiring persons or vehicles recognition, for example at places like: buildings entrance, lobbies, lounges, etc.

Housing construction allows to mount the camera to the ceiling and the wall (image is right oriented in both cases). Camera module is mounted inside the dome housing, which allows to rotate the camera on any axis.

The range of IR illumination according to the manufacturer data, depends on outer conditions (visibility - air transparency, environment, wall colors ie. scene reflectance).



SPECIFICATION

Standard:	PAL
Sensor:	1/3 " Sony Super HAD II CCD
Resolution:	700 TVL
Lens:	2.8 mm
View angle:	81 °
Range of IR illumination:	10 m
Video output:	1 Vpp 75 Ω
Power supply:	12 V / 130 mA
Vandal-proof:	✓
Housing:	Dome - Metal
Color:	White
"Index of Protection":	IP66
Operation temp:	-20 °C ... 50 °C
Weight:	0.170 kg
Dimensions:	Ø 60 x 58 mm
Guarantee:	2 years

PRESENTATION

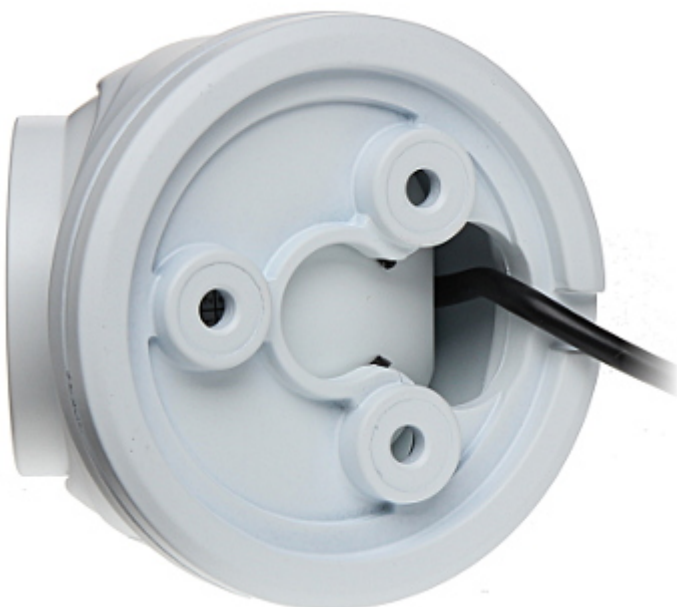
Camera is very small:



DELTA-OPTI Monika Matysiak; <https://www.delta.poznan.pl>
POL; 60-713 Poznań; Graniczna 10
e-mail: delta-opti@delta.poznan.pl; tel: +(48) 61 864 69 60



Camera mounting view:



In the kit:



OUR OPINIONS



- Small sizes of the camera allow to use it to discreet monitoring.

DELTA-OPTI Monika Matysiak; <https://www.delta.poznan.pl>
POL; 60-713 Poznań; Graniczna 10
e-mail: delta-opti@delta.poznan.pl; tel: +(48) 61 864 69 60

- Very wide camera view angle.

PACKAGE

Dimensions (L x W x H): 0x0x0 mm	Gross Weight: 0 kg
----------------------------------	--------------------

