

Code: YK-625S+PIR

HIDDEN CAMERA **YK-625S+PIR** STANDARD: PAL, PIR DETECTOR BUILT-IN 420 TVL 3.7 mm

Net: **215.00 PLN** Gross: **215.00 PLN**

The color camera with Sony sensor with PIR detector built-in, hidden inside detector casing.



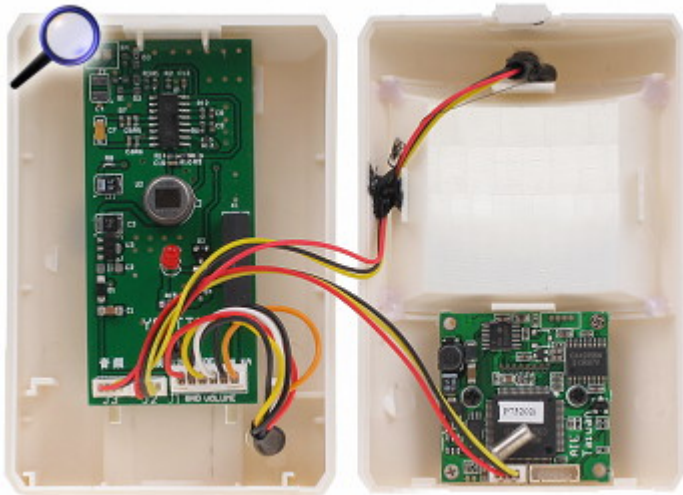
SPECIFICATION

Standard:	PAL
Sensor:	1/3 " Sony CCD
Resolution:	420 TVL
Lens:	3.7 mm (pinhole)
View angle:	66 ° - Camera view angle
PIR detector:	✓
Audio:	Microphone built-in
Detection angle / Detection range:	110 ° / 7 m
Min. illumination:	0.1 Lux
Video output:	1 Vpp / 75 Ω CINCH
Housing:	Spy, Plastic
Color:	White
Alarm outputs:	✓ NO/GND
Power supply:	12 V DC / 130 mA
Application:	The camera is designed for indoor use, due to the possibility of steam condensation.
Operation temp. / Relative humidity:	-10 °C ... 50 °C / max. 85 %
Dimensions:	93 x 62 x 48 mm
Guarantee:	2 years

PRESENTATION

Internal view of the housing:

DELTA-OPTI Monika Matysiak; <https://www.delta.poznan.pl>
POL; 60-713 Poznań; Graniczna 10
e-mail: delta-opti@delta.poznan.pl; tel: +(48) 61 864 69 60



In the kit:



OUR TESTS

Camera image at artificial illumination (about 30Lux):



Camera image at direct strong light opposite to camera:



Camera image at night conditions, at different illumination values show below:

1 LUX:



0.1 LUX:



0.01 LUX:



PACKAGE

Dimensions (L x W x H): 0x0x0 mm	Gross Weight: 0 kg
----------------------------------	--------------------

