

Code: APTI-32C4-2812

## IP CAMERA **APTI-32C4-2812** - 3.0 Mpx 2.8 ... 12 mm

Net: **463.41 PLN** Gross: **463.41 PLN**

IP camera with efficient H.264 image compression algorithm for clear and smooth video streaming at maximal resolution of 2048 x 1536 (3.2 MPx). Very easy operation by Internet Explorer browser allows the users to convenient and remote support, and also remote management of the camera. Included camera software enables management and integrated monitoring of many network cameras. Its using allows to create large surveillance system.

ICR - The movable IR filter allows to perfect colors reproduction in daylight and wide gray-scale with high sharpness of the image at night mode. Camera bracket allows to adjust the camera to any direction, and power cables are hidden inside the bracket.



### SPECIFICATION

Standard:	TCP/IP
Digital Image Processor:	DSP AMBARELLA S2L55
Sensor:	1/3 " Sony CMOS IMX124
Matrix size:	3.2 Mpx
Resolution:	2048 x 1536 - 3.0 Mpx , 1920 x 1080 - 1080p
Lens:	2.8 ... 12 mm, 3 Mpx
View angle:	81 ° ... 23 ° (manufacturer data) 86 ° ... 35 ° (our tests result)
S/N ratio:	> 50 dB
Range of IR illumination:	40 m
IR illuminator power adjustment:	Automatic
Image compression method:	H.264
Bitrate:	64 ... 12000 kbps
Main stream frame rate:	max. 30 fps - 2048 x 1536
Network interface:	10/100 Base-T (RJ-45)
Alarm inputs / outputs:	—
Network protocols:	RTSP, FTP, PPPOE, DHCP, DDNS, NTP, UPnP, TCP
Audio:	—
WEB Server:	Built-in
Max. number of on-line users:	3
ONVIF:	2.4
RS-485 interface:	—
Mobile phones support:	Android, iOS (iPhone, iPad)

DELTA-OPTI Monika Matysiak; <https://www.delta.poznan.pl>  
POL; 60-713 Poznań; Graniczna 10  
e-mail: [delta-opti@delta.poznan.pl](mailto:delta-opti@delta.poznan.pl); tel: +(48) 61 864 69 60

Default admin user / password:	admin / admin
Default IP address:	192.168.1.168
Web browser access ports:	80
PC client access ports:	80
Mobile client access ports:	80
Port ONVIF:	80
RTSP URL:	rtsp://user:password@ip_address:80/0 - Main stream rtsp://user:password@ip_address:80/1 - Sub stream
Main features:	<ul style="list-style-type: none"> <li>• ICR - Movable InfraRed filter</li> <li>• 3D-DNR - Digital Noise Reduction</li> <li>• Possibility to change the resolution, quality and bit rate</li> <li>• Motion Detection</li> <li>• Privacy zones</li> <li>• Configurable: brightness, contrast, saturation</li> <li>• Sharpness - sharper image outlines</li> <li>• Mirror - Mirror image</li> </ul>
Power supply:	12 V DC / 640 mA
Housing:	Compact, Metal
Color:	Dark graphite
"Index of Protection":	IP66
Operation temp:	-20 °C ... 55 °C
Weight:	1.05 kg
Dimensions:	290 x 93 x 85 mm
Supported languages:	English, Bulgarian, French, Spanish, Dutch, German, Polish, Russian, Turkish, Italian
Manufacturer / Brand:	APTI
Guarantee:	2 years

## PRESENTATION



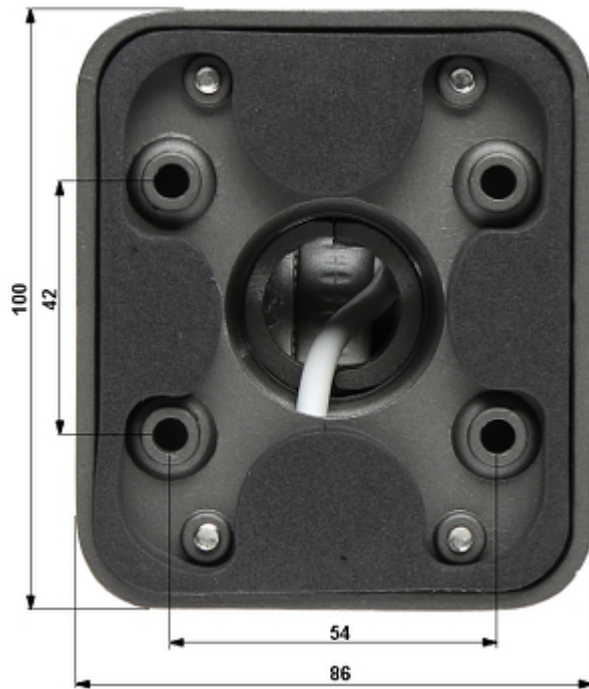
Side view:



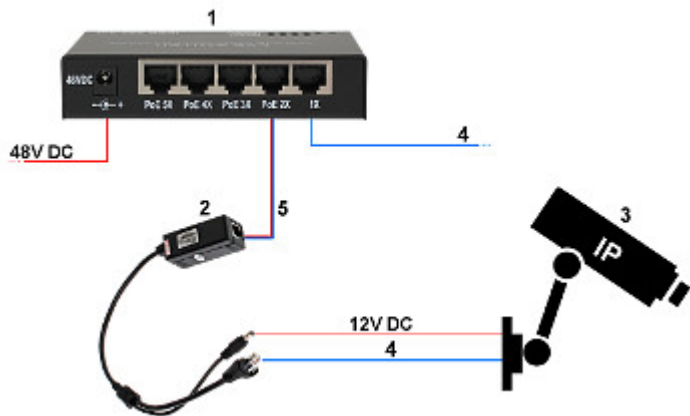
Bottom view:



Bracket dimensions:



See how you can power the camera in PoE standard:



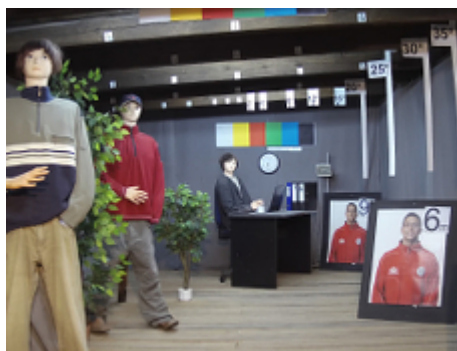
- 1. SWITCH PoE
- 2. POE-802.3AF/C
- 3. IP Camera
- 4. Ethernet
- 5. Ethernet + PoE

In the kit:



## OUR TESTS

Camera image at artificial illumination (about 30Lux):



Camera image at night conditions with internal built-in IR illuminator on:



Camera image at direct strong light opposite to camera:



## PACKAGE

Dimensions (L x W x H): 0x0x0 mm	Gross Weight: 0 kg
----------------------------------	--------------------

DELTA-OPTI Monika Matysiak; <https://www.delta.poznan.pl>  
POL; 60-713 Poznań; Graniczna 10  
e-mail: delta-opti@delta.poznan.pl; tel: +(48) 61 864 69 60



DELTA-OPTI Monika Matysiak; <https://www.delta.poznan.pl>  
POL; 60-713 Poznań; Graniczna 10  
e-mail: delta-opti@delta.poznan.pl; tel: +(48) 61 864 69 60