

Code: APTI-27V3-2812

IP VANDALPROOF CAMERA **APTI-27V3-2812** - 1080p 2.8 ... 12 mm

Net: **395.12 PLN** Gross: **395.12 PLN**

IP camera with efficient H.264 image compression algorithm for clear and smooth video streaming at maximal resolution of 1080p (2.4 MPx). Very easy operation by Internet Explorer browser allows the users to convenient and remote support, and also remote management of the camera. Included camera software enables management and integrated monitoring of many network cameras. Its using allows to create large surveillance system.

ICR - The movable IR filter allows to perfect colors reproduction in daylight and wide gray-scale with high sharpness of the image at night mode.



SPECIFICATION

Standard:	TCP/IP
Digital Image Processor:	AMBARELLA S2L
Sensor:	1/2.8 " Sony CMOS IMX322
Matrix size:	2.4 Mpx
Resolution:	1920 x 1080 - 1080p
Lens:	2.8 ... 12 mm, 3.0 Mpx
View angle:	85 ° ... 24 ° (manufacturer data) 94 ° ... 37 ° (our tests result)
S/N ratio:	> 50 dB
Range of IR illumination:	30 m
Memory card slot:	—
Image compression method:	H.264
Bitrate:	64 ... 12000 kbps
Main stream frame rate:	max. 25 fps - 1080p
Network interface:	10/100 Base-T (RJ-45)
Alarm inputs / outputs:	—
Network protocols:	RTSP, DHCP, DDNS, NTP, HTTP
Audio:	—
WEB Server:	Built-in
Max. number of on-line users:	10

DELTA-OPTI Monika Matysiak; <https://www.delta.poznan.pl>
POL; 60-713 Poznań; Graniczna 10
e-mail: delta-opti@delta.poznan.pl; tel: +(48) 61 864 69 60

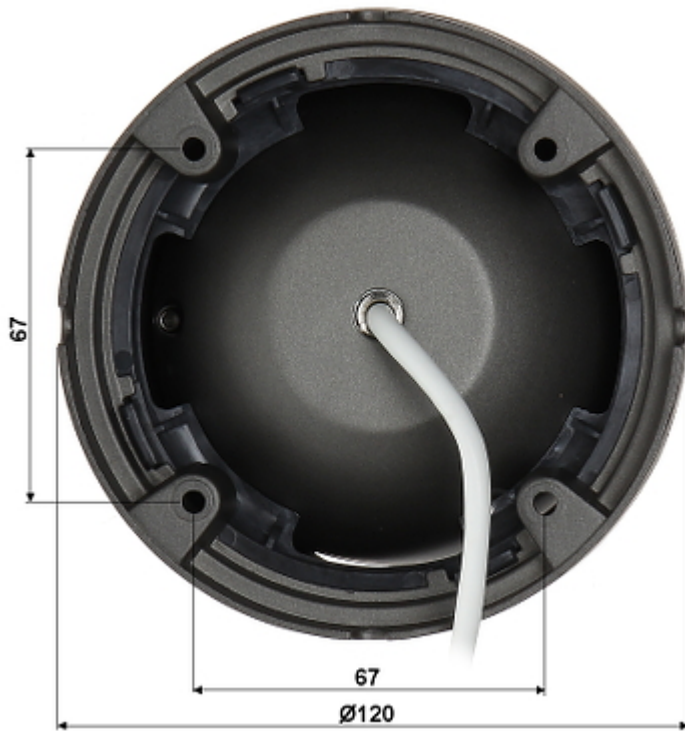
ONVIF:	2.4
RS-485 interface:	—
Mobile phones support:	Port no.: 80 or access by a cloud (P2P) <ul style="list-style-type: none"> • Android: Free application FREEIP • iOS (iPhone): Free application FREEIP
Default admin user / password:	admin / admin
Default IP address:	192.168.1.168
Web browser access ports:	80
PC client access ports:	80
Mobile client access ports:	80
Port ONVIF:	80
RTSP URL:	rtsp://user:password@ip_address:80/0 - Main stream rtsp://user:password@ip_address:80/1 - Sub stream
Main features:	<ul style="list-style-type: none"> • ICR - Movable InfraRed filter • 3D-DNR - Digital Noise Reduction • WDR - Wide Dynamic Range • ISO+ - improve image quality when working at night conditions with active IR illuminator • Possibility to change the resolution, quality and bit rate • Motion Detection • Privacy zones • Configurable: brightness, contrast, saturation • Sharpness - sharper image outlines • Mirror - Mirror image
Power supply:	12 V DC / 480 mA
Housing:	Dome - Metal
Vandal-proof:	✓
Color:	Graphite
"Index of Protection":	IP66
Operation temp:	-20 °C ... 55 °C
Weight:	0.6 kg
Dimensions:	Ø 120 x 95 mm
Supported languages:	English, Bulgarian, Chinese, French, Spanish, Japanese, Korean, German, Polish, Portuguese, Russian, Turkish, Italian
Manufacturer / Brand:	APTI
Guarantee:	2 years

PRESENTATION

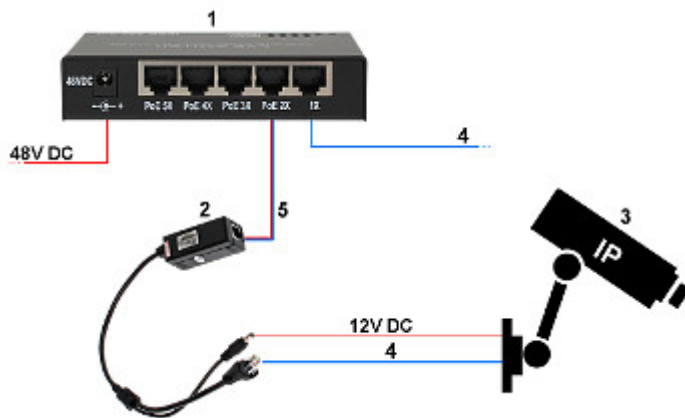
Camera view after remove the Dome cover - camera lens adjustment knobs are visible:



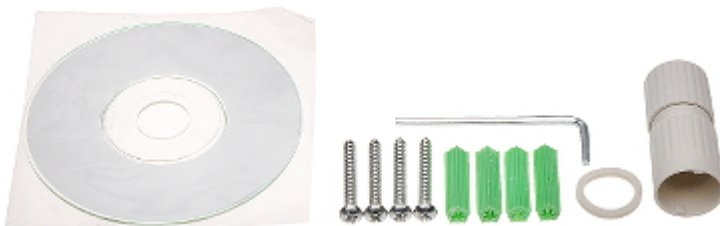
Mounting side view:



See how you can power the camera in PoE standard:

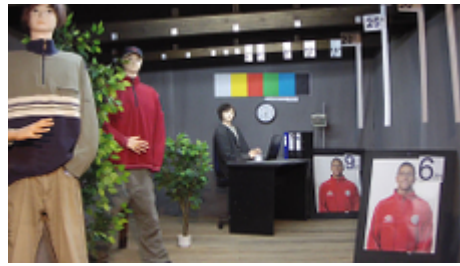


- 1. SWITCH PoE
 - 2. POE-802.3AF/C
 - 3. IP Camera
 - 4. Ethernet
 - 5. Ethernet + PoE
- In the kit:



OUR TESTS

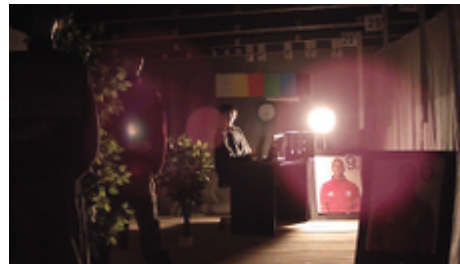
Camera image at artificial illumination (about 30Lux):



Camera image at night conditions with internal built-in IR illuminator on:



Camera image at direct strong light opposite to camera:



PACKAGE

Dimensions (L x W x H): 0x0x0 mm	Gross Weight: 0 kg
----------------------------------	--------------------