

Code: GEMINI-AH2-45W

## AHD, PAL CAMERA **GEMINI-AH2-45W** - 1080p 2.8 ... 12 mm

Net: **304.00 PLN** Gross: **304.00 PLN**

Megapixel camera with 1/2.8" Sony CMOS sensor and AHD (Analog High Definition) / PAL.

The AHD interface allows to transmission of analog video signal via coaxial cable in 1080p resolution. It enables the transmission of HD resolution images for even 500 m distance with keeping the low costs of the installation. During transmission there are no delays and is maintained the original, high quality image.

Additionally camera has a possibility to select output signal standard between AHD and PAL. The change of the AHD / PAL standard is done with joystick by holding it tilted to the right or to the left for approx. 3 seconds, without going into the OSD.

The 3-Axis integrated camera bracket has a regulation in all three planes, which allows to turn the camera to any direction.



### SPECIFICATION

Standard:	AHD / PAL
Sensor:	1/2.8 " Sony CMOS IMX222
Digital Image Processor:	Nextchip NVP2441H
Matrix size:	2.0 Mpx
Resolution:	1920 x 1080 - 1080p AHD-H , 960 x 576 - 960H PAL
Video output:	1 Vpp 75 Ω, AHD / PAL - selectable by switch + Additional "Spot" output - allows to quick view the image from camera and its configuration without the need to disconnect it from monitoring system
Lens:	2.8 ... 12 mm, 2 Mpx, DC
View angle:	• 85 ° ... 24 ° (manufacturer data) • 92 ° ... 31 ° (our tests result)
S/N ratio:	> 50 dB
IR illuminator power adjustment:	By potentiometer
Range of IR illumination:	50 m
OSD menu:	✓
Main features:	<ul style="list-style-type: none"><li>• ICR - Movable InfraRed filter</li><li>• Day/Night mode (color/b&amp;w/auto)</li><li>• WB - White Balance (ATW/AWB/manual/indoor/outdoor)</li><li>• Sense-UP - (Slow Shutter) - Increase the sensor sensitivity max. x 30</li><li>• D-WDR - Wide Dynamic Range</li><li>• 2D-DNR / 3D-DNR - Digital Noise Reduction</li><li>• F-DNR (Defog) - Reduction of image noise caused by precipitation</li><li>• Motion Detection - max. 4 zones</li><li>• Privacy zones - max. 4</li><li>• BLC - configurable Back Light Compensation</li><li>• HSBL - High Light Compensation (spot)</li><li>• Mirror - Mirror image</li><li>• image "freeze"</li><li>• Sharpness - sharper image outlines</li><li>• Monitor type correction - LCD/CRT</li></ul>
Power supply:	12 V DC / 400 mA
Housing:	Compact, Metal

DELTA-OPTI Monika Matysiak; <https://www.delta.poznan.pl>  
POL; 60-713 Poznań; Graniczna 10  
e-mail: [delta-opti@delta.poznan.pl](mailto:delta-opti@delta.poznan.pl); tel: +(48) 61 864 69 60

Color:	White
"Index of Protection":	IP66
Operation temp:	-20 °C ... 55 °C
Weight:	0.8 kg
Dimensions:	255 x 123 x 92 mm
Supported languages:	English, Chinese Traditional, Chinese Simplified, French, Spanish, Dutch, German, Polish, Portuguese, Russian, Turkish, Italian
Manufacturer / Brand:	GEMINI
Guarantee:	2 years

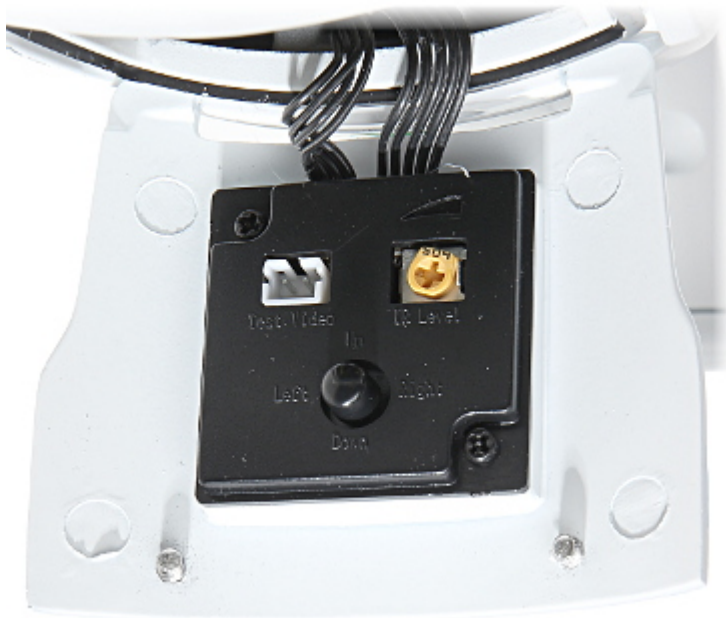
## PRESENTATION



Side view:



The appropriate signal format selection is done by tilting and holding the joystick for 5 s without entering to the OSD menu. Changing the signal to the NTSC in the camera causes loss of image in connected AHD recorder:



#### Configuration

- 1 - Turn on the power
  - 2 - Move the joystick left or right, setting the appropriate resolution
  - 3 - Move the joystick down by 5 s, setting the PAL / NTSC
- The PAL and NTSC standard is set regardless of the resolution.

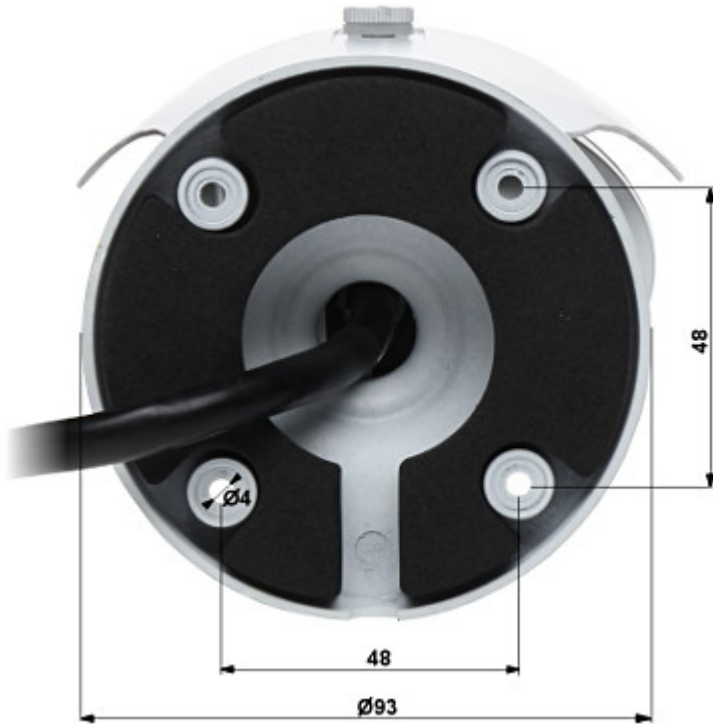


If you need to make an adjustment and open the cover, please follow the steps in the following order:

- 1 - loosen the Phillips screws (hinge),
- 2 - unscrew the Allen screws (cover),
- 3 - open the cover, make the adjustment and close the cover,
- 4 - screw the Allen screws (cover),
- 5 - tighten the Phillips screws (hinge).

This ensures the correct sealing pressure and tightness of the camera.

Mounting dimensions:

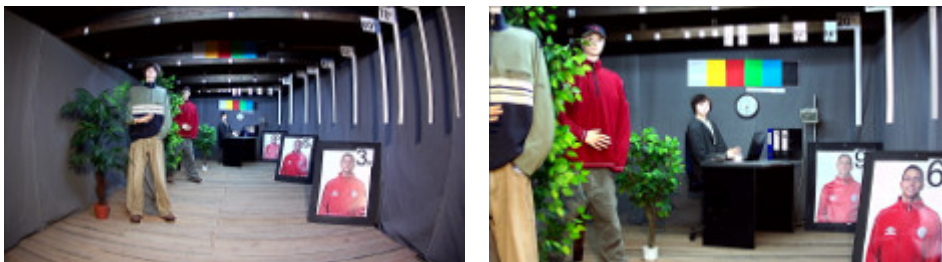


In the kit:



**OUR TESTS**

Camera image at artificial illumination (about 30Lux):



Camera image at night conditions with internal built-in IR illuminator on:



Camera image at direct strong light opposite to camera:



Record from camera during daylight operation:

:

Record from camera during night conditions operation:

:

## PACKAGE

Dimensions (L x W x H): 0x0x0 mm	Gross Weight: 0 kg
----------------------------------	--------------------

