

Code: DH-IPC-HF8331FP-E

IP CAMERA **DH-IPC-HF8331FP-E** - 3.0 Mpx DAHUA

Net: **2 129.00 PLN** Gross: **2 129.00 PLN**

IP camera with efficient H.264/H.265/MJPEG image compression algorithm for clear and smooth video streaming at maximal resolution of 2048 x 1536 (3.0 MPx). PoE powering possibility, compatible with the 802.3af standard makes the device more universal and easier to install. The device is equipped with ePoE technology which enables transmission up to 800 m at a speed of 10 Mb/s or 300 m at a speed of 100 Mb/s via cat. 5e twisted-pair.



SPECIFICATION

Standard:	TCP/IP
Sensor:	1/2.8 " STARVIS™ CMOS
Matrix size:	3.0 Mpx
Resolution:	2048 x 1536 - 3.0 Mpx , 1920 x 1080 - 1080p , 1280 x 960 - 1.3 Mpx , 1280 x 720 - 720p
Video output:	1 Vpp / 75 Ω
Lens:	—
Auto Iris socket:	DC
Min. illumination:	• 0.02 Lux (color) / F1.2 • 0.01 Lux (B/W) / F1.2
S/N ratio:	> 50 dB
Image compression method:	H.265+ / H.265 / H.264+ / H.264
Alarm inputs / outputs:	2 / 2
RS-485 interface:	✓
Protocols:	Pelco-D, Pelco-P and others
Bitrate:	24 kbps ... 10240 kbps - H.264 14 kbps ... 9216 kbps - H.265
Main stream frame rate:	50 fps - 3.0 Mpx
Network interface:	10/100 Base-T (RJ-45)

DELTA-OPTI Monika Matysiak; <https://www.delta.poznan.pl>
POL; 60-713 Poznań; Graniczna 10
e-mail: delta-opti@delta.poznan.pl; tel: +(48) 61 864 69 60

Network protocols:	HTTP, HTTPS, TCP, ARP, RTSP, RTP, UDP, SMTP, FTP, DHCP, DNS, DDNS, PPPoE, IPv4/IPv6, QoS, UPnP, NTP, Bonjour, IEEE 802.1x, Multicast, ICMP, IGMP, SNMP
Audio:	<ul style="list-style-type: none"> • Microphone built-in • 2 x Audio input • 1 x Audio output • Bi-directional audio streaming support • Audio detection
WEB Server:	Built-in, NVR compliance
Max. number of on-line users:	20
ONVIF:	16.12
Memory card slot:	Micro SD memory cards up to 128GB support (possible local recording)
Mobile phones support:	Port no.: 37777 or access by a cloud (P2P) • Android: Free application DMSS , Android: Free application IMOU • iOS (iPhone): Free application DMSS , iOS (iPhone): Free application IMOU
Default admin user / password:	admin / admin
Default IP address:	192.168.1.108
Web browser access ports:	80, 37777
PC client access ports:	37777
Mobile client access ports:	37777
Port ONVIF:	80
RTSP URL:	rtsp://admin:hasło@192.168.1.108:554/cam/realmonitor?channel=1&subtype=0 - Main stream rtsp://admin:hasło@192.168.1.108:554/cam/realmonitor?channel=1&subtype=1 - Sub stream
Main features:	<ul style="list-style-type: none"> • WDR - 140 dB - Wide Dynamic Range • 3D-DNR - Digital Noise Reduction • EIS - Electronic Image Stabilization • F-DNR (Defog) - Reduction of image noise caused by precipitation • ABF - (Auto Back Focus) - auto focus correction during day/night operation modes switching • ROI - improve the quality of selected parts of image • ICR - Movable InfraRed filter • AGC - Automatic Gain Control • BLC/HLC - Back Light / High Light Compensation • D-ZOOM - Digital Zoom • Day/Night mode (color/b&w/auto) • Motion Detection • IVS analysis : crossing the line (tripwire), intrusion, abandoned/missing object, face detection, people counting, heat map • Audio detection • Configurable Privacy Zones • Mirror - Mirror image • Sharpness - sharper image outlines
Power supply:	<ul style="list-style-type: none"> • PoE (802.3af), • ePoE, • 12 V DC / 550 mA, • 24 V AC / 270 mA
Power consumption:	< 6.6 W
Housing:	BOX, Metal
Color:	White / Black
Operation temp:	-30 °C ... 60 °C
Weight:	0.76 kg
Dimensions:	162 x 86 x 74 mm
Manufacturer / Brand:	DAHUA
Supported languages:	Polish, English, Bulgarian, Czech, Danish, Finnish, Greek, Norwegian, Swedish, Hungarian



Guarantee:

3 years

PRESENTATION

Side view:



Bottom view:



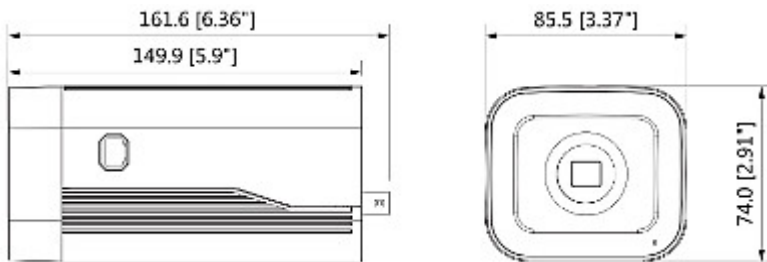
Rear view:



DELTA-OPTI Monika Matysiak; <https://www.delta.poznan.pl>
POL; 60-713 Poznań; Graniczna 10
e-mail: delta-opti@delta.poznan.pl; tel: +(48) 61 864 69 60



Dimensions:



In the kit:



OUR TESTS

Camera image at artificial illumination (about 30Lux):



Camera image at direct strong light opposite to camera:



Camera image at night conditions with external IR illuminator on:



Camera image at night conditions, at different illumination values show below:

10 LUX:



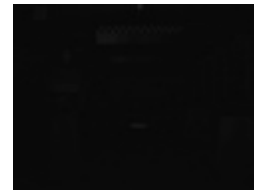
1 LUX:



0.1 LUX:



0.01 LUX:



PACKAGE

DELTA-OPTI Monika Matysiak; <https://www.delta.poznan.pl>
POL; 60-713 Poznań; Graniczna 10
e-mail: delta-opti@delta.poznan.pl; tel: +(48) 61 864 69 60

Dimensions (L x W x H): 0x0x0 mm	Gross Weight: 0 kg
----------------------------------	--------------------

