

Code: BCS-SDIP1204IR

IP SPEED DOME CAMERA INDOOR **BCS-SDIP1204IR** - 1080p 2.7 ... 11 mm

Net: **990.00 PLN** Gross: **990.00 PLN**



IP camera equipped with very good high resolution sensor. Due to above it is perfect solution for surveillance systems requiring persons or vehicles recognition.

Built-in Infra-Red illuminator enables night monitoring. The range of IR illumination according to the manufacturer data, depends on outer conditions (visibility - air transparency, environment, wall colors ie. scene reflectance).

For a few models of IP cameras working at $\geq 1920 \times 1080$ resolution we recommend to use of network with 1Gb/s bandwidth.

SPECIFICATION

Standard:	TCP/IP
Sensor:	1/2.8 " CMOS
Matrix size:	2.0 Mpx
Resolution:	1920 x 1080 - 1080p 1280 x 720 - 720p 640 x 480 - VGA 704 x 576 - D1
Scanning system:	Progressive
Lens:	2.7 ... 11 mm
View angle:	88 ° ... 27 ° (manufacturer data) 95 ° ... 33 ° (our tests result)
Optical zoom:	x 4
Digital zoom:	x 16
Range of IR illumination:	20 m
S/N ratio:	> 50 dB (AGC off)
Video output:	—
Rotation speed (manual control):	0.1 °/s ... 70 °/s (horizontal) 0.1 °/s ... 75 °/s (vertical)
Preset rotation speed:	max. 70 °/s
Horizontal rotation range:	355 °

DELTA-OPTI Monika Matysiak; <https://www.delta.poznan.pl>
POL; 60-713 Poznań; Graniczna 10
e-mail: delta-opti@delta.poznan.pl; tel: +(48) 61 864 69 60

Vertical rotation range:	-3 ° ... 90 °
RS-485 interface:	—
Number of presets:	300
Horizontal scan:	✓
Route settings:	8
Image compression method:	H.264, MJPEG
Bitrate:	48 ... 8192 kbps - H.264 56 ... 20480 kbps - MJPEG
Alarm inputs / outputs:	—
Main stream frame rate:	25 fps - 1080p
Network interface:	10/100 Base-T (RJ-45)
Network protocols:	IPv4/IPv6, HTTP, HTTPS, SSL, TCP/IP, UDP, UPnP, ICMP, IGMP, SNMP, RTSP, RTP, SMTP, NTP, DHCP, DNS, PPPOE, DDNS, FTP, IP Filter, QoS, Bonjour
WEB Server:	Built-in, NVR compliance
Max. number of on-line users:	20
ONVIF:	2.4 Profile S
Audio:	Microphone built-in
Mobile phones support:	Port no.: 37777 or access by a cloud (P2P) <ul style="list-style-type: none"> • Android: Free application DMSS • iOS (iPhone): Free application DMSS • Windows Phone: Free application wDMSS Lite There are also paid versions of mobile applications: gDMSS Plus, iDMSS Plus, wDMSS plus
Main features:	<ul style="list-style-type: none"> • WDR - Wide Dynamic Range • ICR - Movable InfraRed filter • Day/night mode • BLC - Back Light Compensation • HLC - High Light Compensation (spot) • Microphone built-in • Micro SD memory cards up to 64GB support (possible local recording)
Power supply:	<ul style="list-style-type: none"> • 12 V DC / 970 mA • PoE (802.3af)
Housing:	Speed Dome, Plastic
Color:	White / Black
Operation temp:	-30 °C ... 60 °C
"Index of Protection":	IP55
Weight:	0.74 kg
Dimensions:	Ø 133 x 117 mm
Manufacturer / Brand:	BCS
Guarantee:	2 years

PRESENTATION



DELTA-OPTI Monika Matysiak; <https://www.delta.poznan.pl>
 POL; 60-713 Poznań; Graniczna 10
 e-mail: delta-opti@delta.poznan.pl; tel: +(48) 61 864 69 60



Connectors:

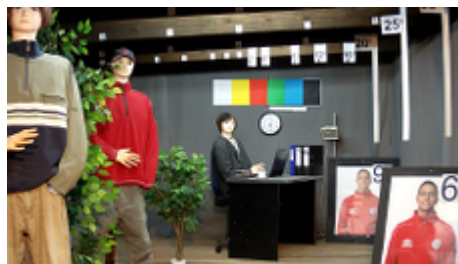


In the kit:



OUR TESTS

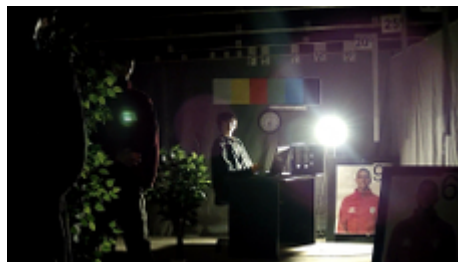
Camera image at artificial illumination (about 30Lux):



Camera image at night conditions with internal built-in IR illuminator on:



Camera image at direct strong light opposite to camera:



PACKAGE

Dimensions (L x W x H): 0x0x0 mm	Gross Weight: 0 kg
----------------------------------	--------------------

DELTA-OPTI Monika Matysiak; <https://www.delta.poznan.pl>
POL; 60-713 Poznań; Graniczna 10
e-mail: delta-opti@delta.poznan.pl; tel: +(48) 61 864 69 60



DELTA-OPTI Monika Matysiak; <https://www.delta.poznan.pl>
POL; 60-713 Poznań; Graniczna 10
e-mail: delta-opti@delta.poznan.pl; tel: +(48) 61 864 69 60