

Code: NVR501-04B-LP4

NVR **NVR501-04B-LP4** 4 CHANNELS, 4 PoE UNIVIEW

Net: **283.39 EUR** Gross: **283.39 EUR**

The NVR501-04B-LP4 digital recorder is a professional device using in IP surveillance systems. 4-port PoE Switch built-in.



SPECIFICATION

Standard:	TCP/IP
Supported resolutions:	max. 8.3 Mpx 4K UHD - 3840 x 2160 px
Video outputs:	1 pcs HDMI 4K 1 pcs VGA
Audio support:	<ul style="list-style-type: none">• 4 Channels - Audio from cameras• Bi-directional audio streaming support
Audio inputs:	1 pcs CINCH
Audio outputs:	1 pcs CINCH
Image compression method:	Ultra 265 / H.265 / H.264
Bitrate:	max. 80 Mbps
Supported hard drives:	1 x 6 TB SATA
Recording modes:	Manual, Motion Detection, Schedule
External storage devices backup:	Backup to USB drive (pendrive, external drive)
Searching and playback the records:	Records searching: by time and events type. Records playback: forward, backward, fast, slow Advanced searching (to the one second accuracy) 1/4 channel synchronous playback
Network interface:	1 x RJ-45 10/100 Base-TX
Network functions:	Full support via network, Remote records copying, Web-Server built-in max. 128 on-line users
Network protocols:	TCP/IP, P2P, UPnP, NTP, DHCP, PPPoE, HTTP, HTTPS, DNS, DDNS, SNMP, SMTP, RTSP
ONVIF:	✓
Default IP address:	DHCP or 192.168.1.30
Default admin user / password:	admin / 123456

DELTA-OPTI Monika Matysiak; <https://www.delta.poznan.pl>
POL; 60-713 Poznań; Graniczna 10
e-mail: delta-opti@delta.poznan.pl; tel: +(48) 61 864 69 60

Mobile phones support:	Port no.: 80 or access by a cloud (P2P) • Android: Free application EZView • iOS (iPhone): Free application EZView
Web browser access ports:	80, 554
PC client access ports:	Port no.: 80 or access by a cloud (P2P) - PC: Free application EZStation
Mobile client access ports:	80
RTSP URL:	rtsp://192.168.1.30:554/unicast/c1/s0/live - Main stream rtsp://192.168.1.30:554/unicast/c1/s1/live - Sub stream
USB:	1 x USB 2.0 1 x USB 3.0
Serial ports:	—
Alarm inputs / outputs:	—
PTZ control:	PTZ Uniview cameras
Motion Detection:	✓
Intelligent image analysis:	✓
Main features:	Functions implemented in cooperation between the recorder and cameras that support these functions • Intelligent image analysis : crossing the line (tripwire), intrusion, entering the marked area, leaving the marked area, scene changing, abandoned/missing object, objects tracking, people counting, crowd gathering estimation • Human detection • Audio detection • Support ANR function • Corridor mode - useful for monitoring corridors, entrance gates and narrow rooms
Mouse support:	✓
IR remote controller in the set:	—
Switch PoE:	4-port PoE Switch built-in, 30 W / Channel, PoE (802.3af/at)
Maximum total switch load:	50 W
Power supply:	48 V DC / 1.35 A (power adapter included)
Power consumption:	max. 10 W (without HDD)
Operation temp:	-10 °C ... 55 °C
Weight:	0.55 kg
Dimensions:	212 x 205 x 46 mm
Supported languages:	Polish, English, Czech, French, Spanish, Dutch, German, Portuguese, Slovak, Italian
Manufacturer / Brand:	UNIVIEW
Guarantee:	3 years

PRESENTATION

Rear panel:



DELTA-OPTI Monika Matysiak; <https://www.delta.poznan.pl>
POL; 60-713 Poznań; Graniczna 10
e-mail: delta-opti@delta.poznan.pl; tel: +(48) 61 864 69 60

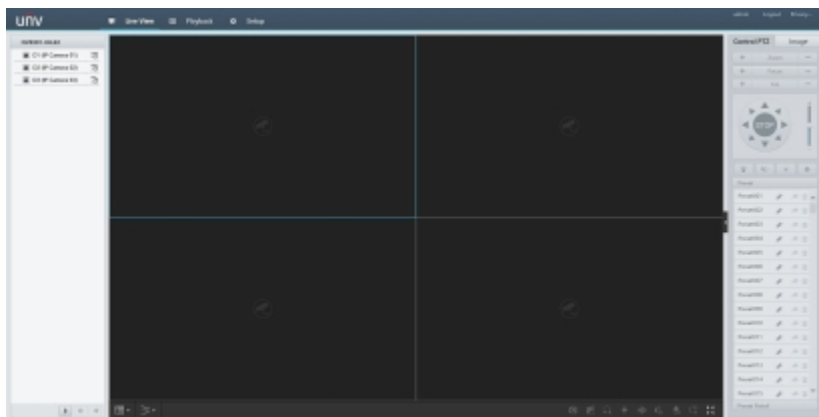
See how to mount a hard disk drive and configure the recorder:

:

In the kit:



Example captures of device interface:



PACKAGE

Dimensions (L x W x H): 0x0x0 mm	Gross Weight: 0 kg
----------------------------------	--------------------



DELTA-OPTI Monika Matysiak; <https://www.delta.poznan.pl>
POL; 60-713 Poznań; Graniczna 10
e-mail: delta-opti@delta.poznan.pl; tel: +(48) 61 864 69 60