

Code: NVR4208-P

NVR **NVR4208-P** 8 CHANNELS + 4-PORT POE SWITCH DAHUA

Net: **317.60 EUR** Gross: **317.60 EUR**



SPECIFICATION

Standard:	TCP/IP
Supported resolutions:	max. 5 Mpx - 2560 x 1920 px
Video outputs:	1 pcs HDMI 1 pcs VGA
Audio support:	8 Channels - Audio from cameras
Audio inputs:	1 pcs Microphone - CINCH
Audio outputs:	1 pcs - CINCH
Image compression method:	H.264 / MJPEG
Supported hard drives:	2 x 6 TB SATA
Recording modes:	Manual, Sensor, Motion detection, Schedule
Network protocols:	HTTP, HTTPS, TCP/IP, IPv4/IPv6, UPnP, RTSP, UDP, SMTP, NTP, DHCP, DNS, DDNS, IP Filter, PPPoE, FTP, IP Search, ONVIF 2.4
External storage devices backup:	Backup to USB drive (pendrive, external drive)
Searching and playback the records:	Records searching: by time and events type. Records playback: forward, backward, fast, slow Advanced searching (to the one second accuracy) All channels synchronous playback, Smart Search function
Bitrate:	max. 200 Mbps
Network functions:	Full support via network, Remote records copying, Web-Server built-in max. 128 on-line users The ANR (Automatic Network Replenishment) function - ensures integrity of recording data in the event of network failures. It bases on automatic saving the recording data to microSD card inserted inside the camera, and after failure is end, the recorded data are automatically synchronized with the recorder
ONVIF:	2.4
Mobile phones support:	Port no.: 37777 or access by a cloud (P2P) • Android: Free application DMSS • iOS (iPhone): Free application DMSS See how to configure the P2P function in Dahua recorders and how to enable the mobile application
Default admin user / password:	admin / admin

DELTA-OPTI Monika Matysiak; <https://www.delta.poznan.pl>
POL; 60-713 Poznań; Graniczna 10
e-mail: delta-opti@delta.poznan.pl; tel: +(48) 61 864 69 60

Default IP address:	192.168.1.108
Web browser access ports:	80, 37777
PC client access ports:	37777
Switch PoE:	4-port PoE Switch built-in, 60 W (max), 25.5 W / Channel, PoE (802.3af/at)
Mobile client access ports:	37777
RTSP URL:	rtsp://admin:haslo@192.168.1.108:554/cam/realmonitor?channel=1&subtype=0 - Main stream rtsp://admin:haslo@192.168.1.108:554/cam/realmonitor?channel=1&subtype=1 - Sub stream
Alarm inputs / outputs:	4 pcs / 2 pcs
PTZ control:	<ul style="list-style-type: none"> • IP Speed Dome Cameras • RS-485 - Many protocols
Motion Detection:	22 x 18 motion zones
USB:	1 pcs USB 2.0 1 pcs USB 3.0
Mouse support:	✓
IR remote controller in the set:	✓
Power supply:	12 V DC / 4 A
Weight:	1.75 kg
Dimensions:	375 x 282 x 56 mm
Supported languages:	English, Bulgarian, Czech, Finnish, Greek, Polish, Romanian, Serbian, Slovenian, Hungarian
Country of origin:	China
Manufacturer / Brand:	DAHUA
Guarantee:	3 years

PRESENTATION

Front panel:



Rear panel:



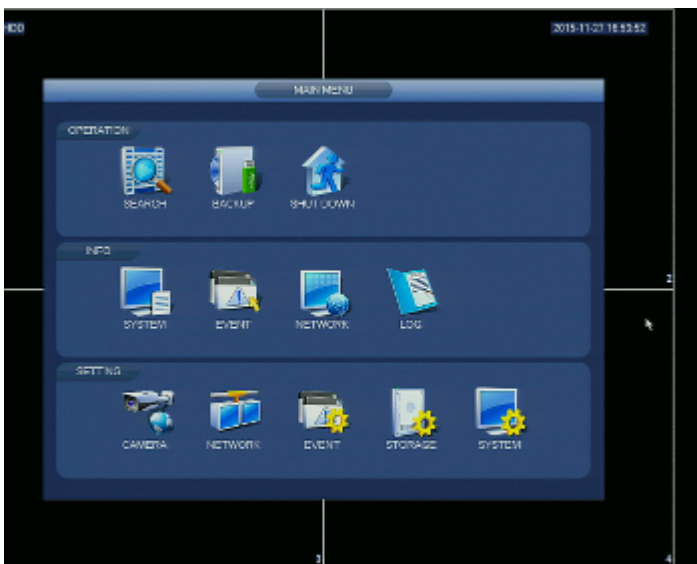
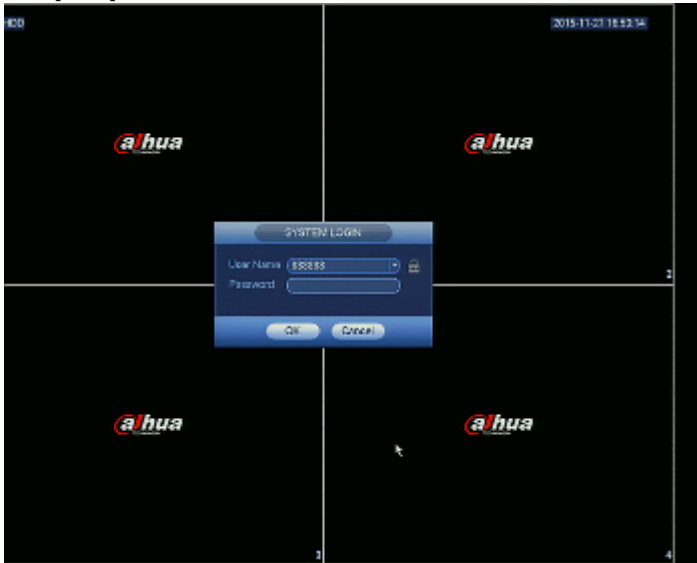
In the kit:



DELTA-OPTI Monika Matysiak; <https://www.delta.poznan.pl>
POL; 60-713 Poznań; Graniczna 10
e-mail: delta-opti@delta.poznan.pl; tel: +(48) 61 864 69 60



Example captures of device interface:



OUR OPINIONS



- Audio transmission via network.

PACKAGE

DELTA-OPTI Monika Matysiak; <https://www.delta.poznan.pl>
 POL; 60-713 Poznań; Graniczna 10
 e-mail: delta-opti@delta.poznan.pl; tel: +(48) 61 864 69 60

Dimensions (L x W x H): 0x0x0 mm	Gross Weight: 0 kg
----------------------------------	--------------------

