

Code: NVR108E2-P8

NVR NVR108E2-P8 8 CHANNELS, 8 PoE UNIARCH

Net: 719.04 PLN Gross: 719.04 PLN



The UNIARCH series product has been designed to minimize costs while maintaining high quality and ease of use.

SPECIFICATION

| | |
|-------------------------------------|--|
| Standard: | TCP/IP |
| Supported resolutions: | max. 8 Mpx 4K UHD - 3840 x 2160 px |
| Video outputs: | 1 pcs HDMI 4K 1 pcs VGA |
| Audio support: | 8 Channels - Audio from cameras |
| Audio inputs: | — |
| Audio outputs: | 1 pcs CINCH |
| Image compression method: | Ultra 265 / H.265 / H.264 |
| Supported hard drives: | 1 x 6 TB SATA |
| Recording modes: | Manual, Motion Detection, Schedule |
| Network protocols: | P2P, UPnP, NTP, DHCP, ONVIF |
| External storage devices backup: | Backup to USB drive (pendrive, external drive) |
| Searching and playback the records: | Records searching: by time and events type. Records playback: forward, backward, fast, slow Advanced searching (to the one second accuracy) Synchronous playback of all channels |
| Network functions: | Full support via network, Remote records copying, Web-Server built-in max. 128 on-line users |
| Bitrate: | max. 50 Mbps |
| Default admin user / password: | admin / 123456 |
| Default IP address: | DHCP or 192.168.1.30 |
| RTSP URL: | rtsp://192.168.1.30:554/unicast/c1/s0/live - Main stream rtsp://192.168.1.30:554/unicast/c1/s1/live - Sub stream |
| Web browser access ports: | 80, 554 |
| PC client access ports: | Port no.: 80 or access by a cloud (P2P) - PC: Free application Uniarch Client |
| Mobile client access ports: | 80 |
| Mobile phones support: | Port no.: 80 or access by a cloud (P2P) • Android: Free application Uniarch • iOS (iPhone): Free application Uniarch |

DELTA-OPTI Monika Matysiak; <https://www.delta.poznan.pl>
POL; 60-713 Poznań; Graniczna 10
e-mail: delta-opti@delta.poznan.pl; tel: +(48) 61 864 69 60

| | |
|----------------------------------|---|
| Alarm inputs / outputs: | — |
| PTZ control: | IP Speed Dome Cameras |
| Motion Detection: | ✓ |
| USB: | 2 x USB 2.0 |
| Mouse support: | ✓ |
| IR remote controller in the set: | — |
| Switch PoE: | 8-port PoE Switch built-in, 30 W / Channel, PoE (802.3af/at) |
| Maximum total switch load: | 75 W |
| Power supply: | 52 V DC / 1.8 A (power adapter included) |
| Power consumption: | ≤ 9 W (without HDD) |
| Weight: | 0.94 kg |
| Dimensions: | 260 x 243 x 46 mm |
| Supported languages: | Polish, English, Czech, French, Spanish, Dutch, German, Portuguese, Slovak, Italian |
| Manufacturer / Brand: | UNIVIEW / UNIARCH |
| Guarantee: | 3 years |

PRESENTATION

Top view:



Rear panel:



See how to mount a hard disk drive and configure the recorder:

:

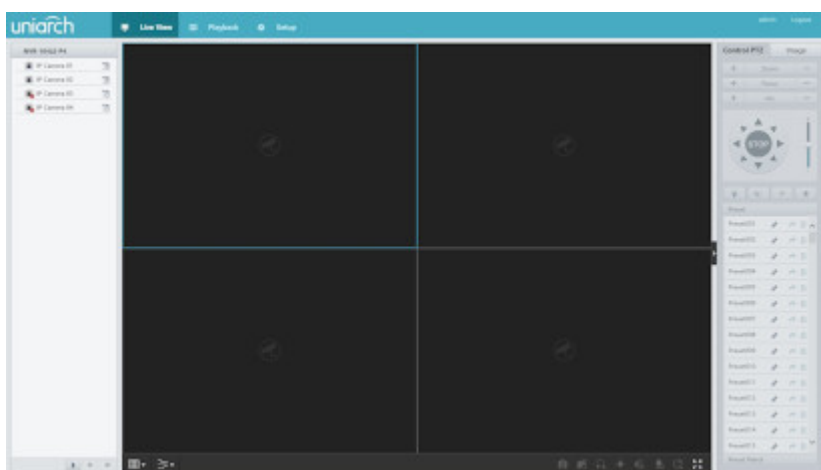
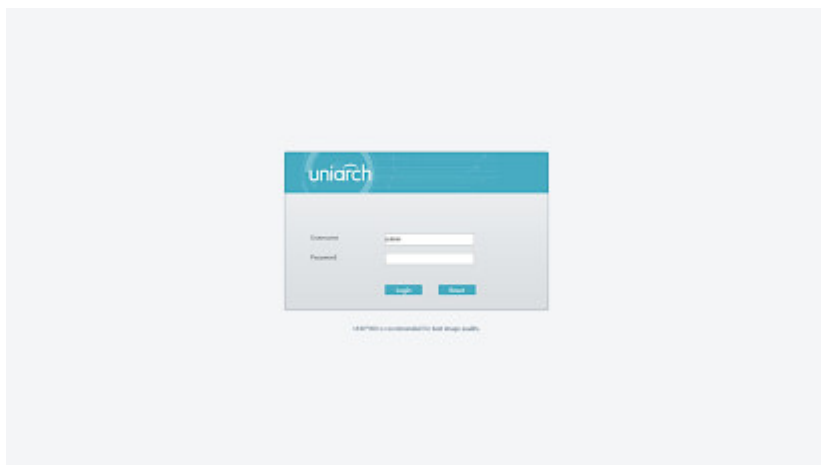
In the kit:



Example captures of device interface:



DELTA-OPTI Monika Matysiak; <https://www.delta.poznan.pl>
 POL; 60-713 Poznań; Graniczna 10
 e-mail: delta-opti@delta.poznan.pl; tel: +(48) 61 864 69 60



PACKAGE

| | |
|----------------------------------|--------------------|
| Dimensions (L x W x H): 0x0x0 mm | Gross Weight: 0 kg |
|----------------------------------|--------------------|



DELTA-OPTI Monika Matysiak; <https://www.delta.poznan.pl>
POL; 60-713 Poznań; Graniczna 10
e-mail: delta-opti@delta.poznan.pl; tel: +(48) 61 864 69 60