

Code: NVR216S-P16

NVR **NVR216S-P16** 16 CHANNELS + 16-PORT SWITCH POE UNIARCH

Net: **306.59 EUR** Gross: **306.59 EUR**



The UNIARCH series product has been designed to minimize costs while maintaining high quality and ease of use. The NVR216S-P16 is characterized by exceptional efficiency and it is easy to use.

SPECIFICATION

Standard:	TCP/IP
Supported resolutions:	max. 8 Mpx - 3840 x 2160 px, 4K UHD
Video outputs:	1 pcs HDMI 4K 1 pcs VGA
Audio support:	16 Channels - Audio from cameras
Audio inputs:	1 pcs Cinch socket
Audio outputs:	1 pcs Cinch socket
Image compression method:	Ultra 265 / H.265 / H.264
Supported hard drives:	2 x 10 TB SATA
Recording modes:	Manual, Motion Detection, Schedule
Network protocols:	P2P, UPnP, NTP, DHCP, PPPoE, ONVIF
External storage devices backup:	Backup to USB drive (pendrive, external drive)
Searching and playback the records:	Records searching: by time and events type. Records playback: forward, backward, fast, slow Advanced searching (to the one second accuracy) Synchronous playback of all channels
Network functions:	Full support via network, Remote records copying, Web-Server built-in max. 128 on-line users
Bitrate:	max. 160 Mbps
Default admin user / password:	admin / 123456
Default IP address:	DHCP or 192.168.1.30
RTSP URL:	rtsp://192.168.1.30:554/unicast/c1/s0/live - Main stream rtsp://192.168.1.30:554/unicast/c1/s1/live - Sub stream
Web browser access ports:	80, 554
PC client access ports:	Port no.: 80 or access by a cloud (P2P) - PC: Free application Uniarch Client
Mobile client access ports:	80

DELTA-OPTI Monika Matysiak; <https://www.delta.poznan.pl>
POL; 60-713 Poznań; Graniczna 10
e-mail: delta-opti@delta.poznan.pl; tel: +(48) 61 864 69 60

Mobile phones support:	Port no.: 80 or access by a cloud (P2P) • Android: Free application Uniarch • iOS (iPhone): Free application Uniarch
Alarm inputs / outputs:	4 / 1
PTZ control:	IP Speed Dome Cameras
Motion Detection:	✓
USB:	2 x USB 2.0
Mouse support:	✓
IR remote controller in the set:	✓
Switch PoE:	16-port PoE Switch built-in, 30 W / Channel, PoE (802.3af/at)
Maximum total switch load:	240 W
Power supply:	230 V AC
Weight:	2.51 kg
Dimensions:	380 x 324 x 53 mm
Supported languages:	Polish, English, Czech, French, Spanish, Dutch, German, Portuguese, Slovenian, Italian
Country of origin:	China
Manufacturer / Brand:	UNIVIEW / UNIARCH
Guarantee:	3 years

PRESENTATION

Top view:



Rear panel:



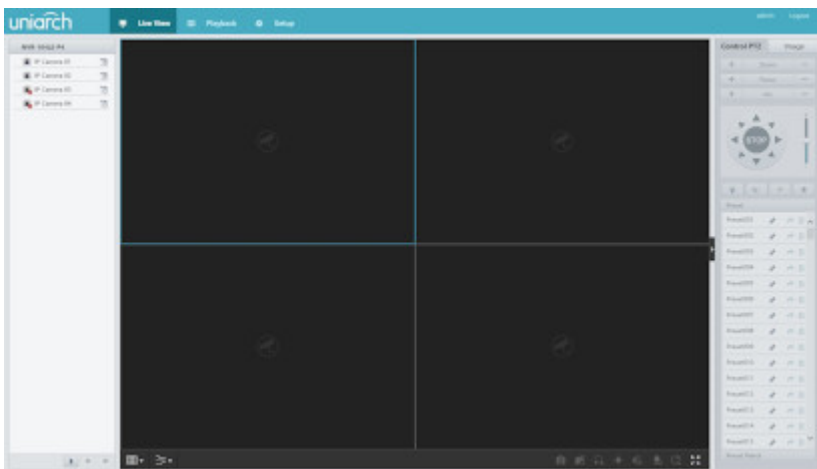
See how to mount a hard disk drive and configure the recorder:

:

In the kit:



Example captures of device interface:



OUR OPINIONS



- First real IP plug and play.
- Very extensive software for iOS.

PACKAGE

Dimensions (L x W x H): 0x0x0 mm	Gross Weight: 0 kg
----------------------------------	--------------------

DELTA-OPTI Monika Matysiak; <https://www.delta.poznan.pl>
POL; 60-713 Poznań; Graniczna 10
e-mail: delta-opti@delta.poznan.pl; tel: +(48) 61 864 69 60