

Code: NVR608R-64-4KS2

**NVR NVR608R-64-4KS2 64 CHANNELS +eSATA DAHUA**

Net: 3 246.95 EUR Gross: 3 246.95 EUR

**SPECIFICATION**

Standard:	TCP/IP
Supported resolutions:	max. 12 Mpx - 4000 x 3000 px
Video outputs:	2 pcs HDMI 1 pcs VGA
Audio support:	64 Channels - Audio from cameras
Audio inputs:	1 pcs CINCH
Audio outputs:	1 pcs CINCH
Image compression method:	H.265 / H.264 / MJPEG
USB:	2 pcs USB 2.0 2 pcs USB 3.0
Supported hard drives:	8 x 8 TB SATA + 1 x eSATA Operation modes : SINGLE, Raid 0/1/5/6/10
Recording modes:	Manual, Sensor, Motion detection, Schedule
Network protocols:	HTTP, HTTPS, TCP/IP, IPv4/IPv6, UPnP, RTSP, UDP, SMTP, NTP, DHCP, DNS, IP Filter, PPPoE, DDNS, FTP, Alarm Server, IP Search ONVIF 2.4
External storage devices backup:	Backup to USB drive (pendrive, external drive) - 2 x Port USB 3.0
Searching and playback the records:	Records searching: by time and events type. Records playback: forward, backward, fast, slow "Frame by Frame" playback function
Bitrate:	max. 384 Mbps (total)
Power consumption:	≤ 20 W (without HDD)
Network functions:	Full support via network, Remote records copying, Web-Server built-in max. 128 on-line users
ONVIF:	2.4
Mobile phones support:	Port no.: 37777 or access by a cloud (P2P) • Android: Free application <a href="#">DMSS</a> • iOS (iPhone): Free application <a href="#">DMSS</a>  See how to configure the P2P function in Dahua recorders and how to enable the mobile application
Default IP address:	192.168.1.108
Default admin user / password:	admin / admin

DELTA-OPTI Monika Matysiak; <https://www.delta.poznan.pl>  
POL; 60-713 Poznań; Graniczna 10  
e-mail: [delta-opti@delta.poznan.pl](mailto:delta-opti@delta.poznan.pl); tel: +(48) 61 864 69 60

Web browser access ports:	80, 37777
PC client access ports:	37777
Mobile client access ports:	37777
RTSP URL:	rtsp://admin:haslo@192.168.1.108:554/cam/realmonitor?channel=1&subtype=0 - Main stream rtsp://admin:haslo@192.168.1.108:554/cam/realmonitor?channel=1&subtype=1 - Sub stream
Alarm inputs / outputs:	16 pcs / 8 pcs
PTZ control:	RS-485 - Many protocols IP Speed Dome Cameras
Motion Detection:	22 x 18 motion zones
Intelligent image analysis:	✓
Mouse support:	✓
IR remote controller in the set:	—
Main features:	<ul style="list-style-type: none"> <li>• Ability to work drives in a RAID array can significantly improve system reliability</li> <li>• Redundant power supply - The recorder has been equipped with two separate power supply adapters</li> </ul>
Power supply:	100 V ... 240 V AC
Weight:	8.74 kg (without HDD)
Dimensions:	444 x 457 x 95 mm
Supported languages:	Polish, English
Country of origin:	China
Manufacturer / Brand:	DAHUA
Guarantee:	<b>3 years</b>

## PRESENTATION

View after open the front cover:



Front panel:



Rear panel:

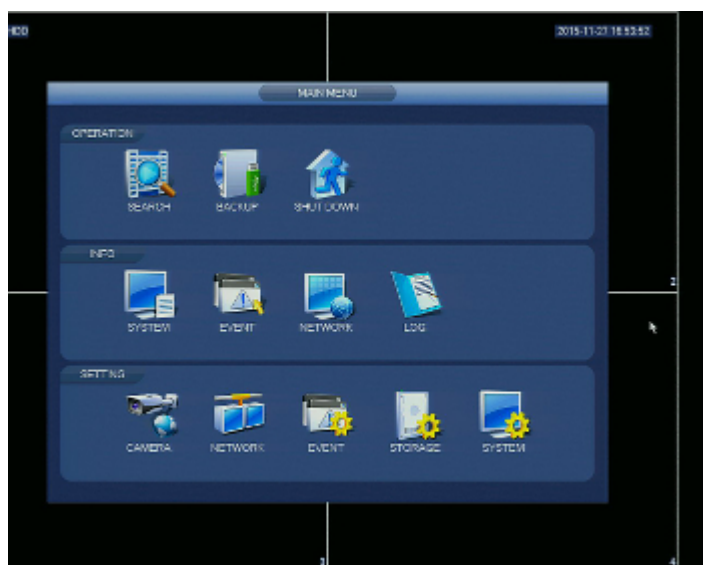
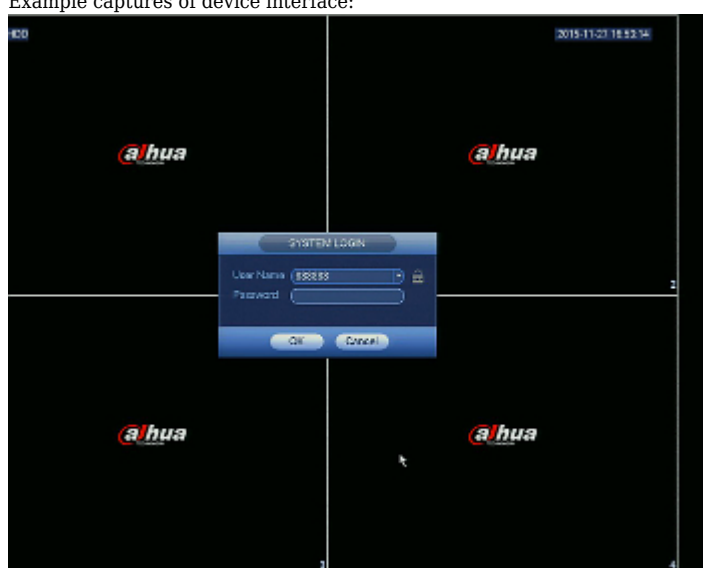


DELTA-OPTI Monika Matysiak; <https://www.delta.poznan.pl>  
POL; 60-713 Poznań; Graniczna 10  
e-mail: delta-opti@delta.poznan.pl; tel: +(48) 61 864 69 60

In the kit:



Example captures of device interface:



## OUR OPINIONS

DELTA-OPTI Monika Matysiak; <https://www.delta.poznan.pl>  
POL; 60-713 Poznań; Graniczna 10  
e-mail: delta-opti@delta.poznan.pl; tel: +(48) 61 864 69 60



- Audio transmission via network.
- The NVR608R-64-4KS2 is equipped with USB 3.0 port allowing to fast records backup.

#### PACKAGE

Dimensions (L x W x H): 0x0x0 mm	Gross Weight: 0 kg
----------------------------------	--------------------

