

Code: GT-N18-025

NVR GT-N18-025 36 CHANNELS +eSATA GEMINI TECHNOLOGYNet: **672.00 PLN** Gross: **672.00 PLN****SPECIFICATION**

Standard:	TCP/IP
Supported resolutions:	16 @ 2592 x 1944 px, 16 @ 2048 x 1536 px, 25 @ 1920 x 1080 px, 36 @ 1280 x 960 px
Video outputs:	1 pcs HDMI 1 pcs VGA
Audio support:	36 Channels
Audio inputs:	Audio from cameras
Audio outputs:	1 pcs CINCH
Image compression method:	H.264
Operation modes:	Firmware V4.0[20160607] : <ul style="list-style-type: none"> • 16 x Main stream (2592 x 1944) + 16 x Sub stream (960 x 576) + 1 Channel played simultaneously • 16 x Main stream (2048 x 1536) + 16 x Sub stream (960 x 576) + 4 Channels played simultaneously • 25 x Main stream (1920 x 1080) + 25 x Sub stream (720 x 576) + 4 Channels played simultaneously • 36 x Main stream (1280 x 960) + 36 x Sub stream (640 x 360) + 9 Channels played simultaneously
Maximal total frame rate:	900 fps @ 1280 x 960 px, 625 fps @ 1920 x 1080 px, 400 fps @ 2048 x 1536 px, 400 fps @ 2592 x 1920 px
Supported hard drives:	8 x 6 TB SATA + 1 x eSATA
Recording modes:	Manual, Sensor, Motion detection, Schedule
Network protocols:	ONVIF, I8, I8H, I9, RTSP
External storage devices backup:	Records backup at .i8 / .avi format to USB (pendrive)
Searching and playback the records:	Records searching: by time and events type. Records playback: forward, backward, fast, slow
Bitrate:	max. 100 Mbps
Network functions:	Live image view, Playback the records, Backup the records
Operation temp:	-10 °C ... 55 °C

DELTA-OPTI Monika Matysiak; <https://www.delta.poznan.pl>
 POL; 60-713 Poznań; Graniczna 10
 e-mail: delta-opti@delta.poznan.pl; tel: +(48) 61 864 69 60

ONVIF:	✓
Mobile phones support:	Port no.: 5800 or access by a cloud (P2P) <ul style="list-style-type: none"> • Android: Free application Fseye • iOS: Free application Fseye
Default IP address:	192.168.1.189
Default admin user / password:	admin / (null)
Web browser access ports:	80, 554 - Internet Explorer 80, 1935 - Chrome, Firefox, Opera
PC client access ports:	5050, 5051, 5052
Mobile client access ports:	5800
RTSP URL:	rtsp://ip_address:554/ch01.264 - Main stream, first channel rtsp://ip_address:554/ch01_sub.264 - Sub stream, first channel
Alarm inputs / outputs:	4 / 4
PTZ control:	RS-485 - PELCO-D/P
Motion Detection:	22 x 18 motion zones
Mouse support:	✓
IR remote controller in the set:	—
Power supply:	230 V AC
Weight:	7.62 kg
Dimensions:	480 x 480 x 98 mm 2 U Rack 19"
Supported languages:	English, Polish
Country of origin:	China
Manufacturer / Brand:	GEMINI TECHNOLOGY
Guarantee:	2 years

PRESENTATION

Front panel:



Rear panel:



In the kit:

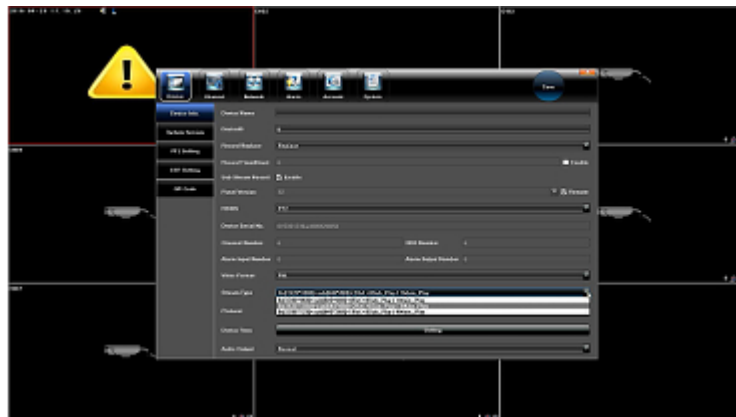


Package:



OUR TESTS

See the configuration of the APTI series cameras operation modes with the recorders:



DELTA-OPTI Monika Matysiak; <https://www.delta.poznan.pl>
POL; 60-713 Poznań; Graniczna 10
e-mail: delta-opti@delta.poznan.pl; tel: +(48) 61 864 69 60

OUR OPINIONS



- The GT-N18-025 is equipped with USB 3.0 port allowing to fast records backup.
- DVR records smooth image at good quality with audio for each camera.
- The recorder is full compatible with GEMINI cameras.

PACKAGE

Dimensions (L x W x H): 0x0x0 mm	Gross Weight: 0 kg
----------------------------------	--------------------

