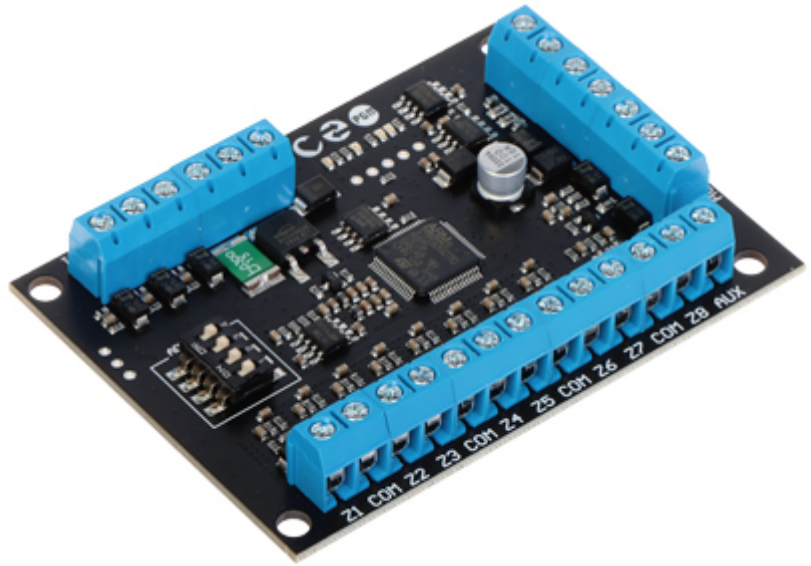


Code: PULSON-EXP-8/2

## EXPANDER **PULSON-EXP-8/2** 8 INPUTS / 2 OUTPUTS PulsON Alarm

Net: 79.00 PLN Gross: 79.00 PLN

The device allows to expand the alarm control panel with additional 8 detection circuit inputs, 3 technical inputs for monitoring an additional power supply, 2 programmable outputs of OC type, 2 power outputs AUX and a tamper input for detecting the opening of an enclosure.



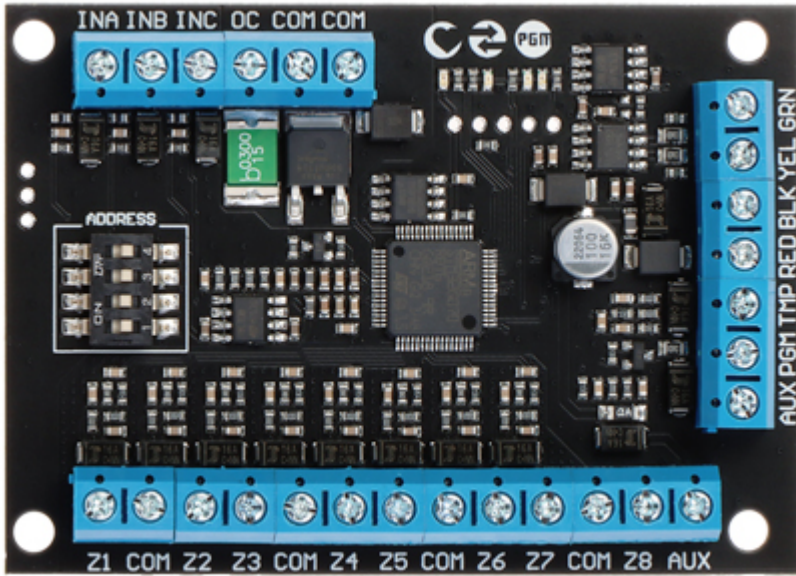
### SPECIFICATION

Support:	PulsON Alarm
Number of inputs:	8 pcs
Number of outputs:	2 pcs - programmable
Tamper output:	✓
Outputs type:	2 pcs OC
Load capacity of OC type programmable outputs:	50 mA, 1 A
Main features:	<ul style="list-style-type: none"><li>• 3 technical inputs for monitoring an additional power supply,</li><li>• 2 power outputs (AUX)</li><li>• LED diodes indicating the device operation status</li><li>• DIP SWITCH for configuration and addressing</li><li>• EN-50131 Grade 2 compliance</li></ul>
Power supply:	12 V DC - Bus connector
Maximal current consumption:	30 mA
Operation temp:	-10 °C ... 55 °C
Weight:	0.04 kg
Dimensions:	81 x 57 mm
Manufacturer / Brand:	PulsON Alarm
Guarantee:	2 years

### PRESENTATION

Top view:

DELTA-OPTI Monika Matysiak; <https://www.delta.poznan.pl>  
POL; 60-713 Poznań; Graniczna 10  
e-mail: delta-opti@delta.poznan.pl; tel: +(48) 61 864 69 60



In the kit:



#### PACKAGE

Dimensions (L x W x H): 0x0x0 mm	Gross Weight: 0 kg
----------------------------------	--------------------