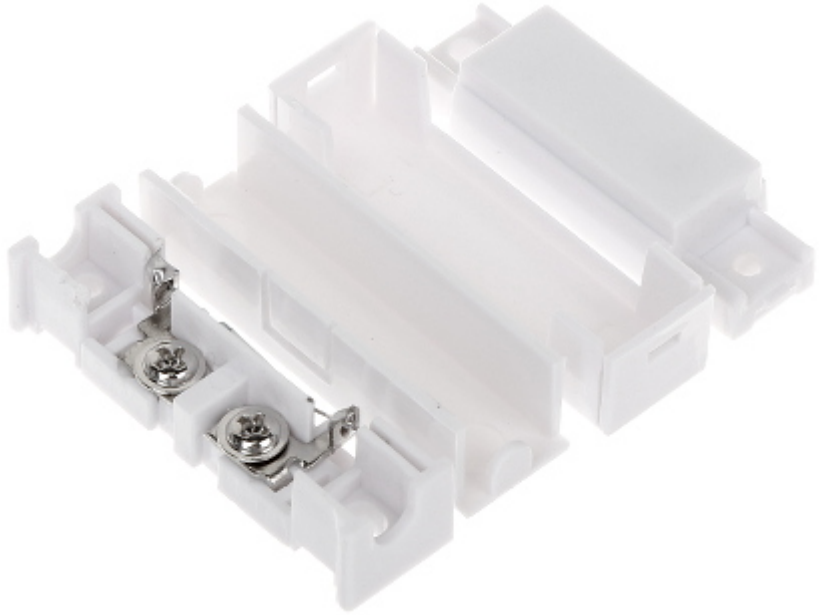


Code: KN-CA44A

SIDE MAGNETIC CONTACT **KN-CA44A**

Net: **1.03 EUR** Gross: **1.03 EUR**

The magnetic contacts can be used wherever required for controlling the status of doors, windows and/or other movable elements, e.g. for protection or monitoring of access to particular sites, spaces, facilities, in automatic control systems, etc.
The contact is designed for surface mounting.

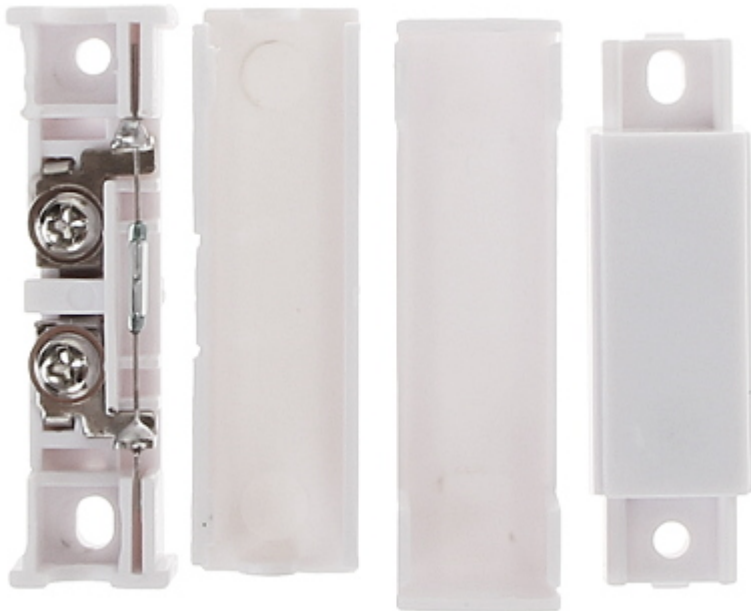


SPECIFICATION

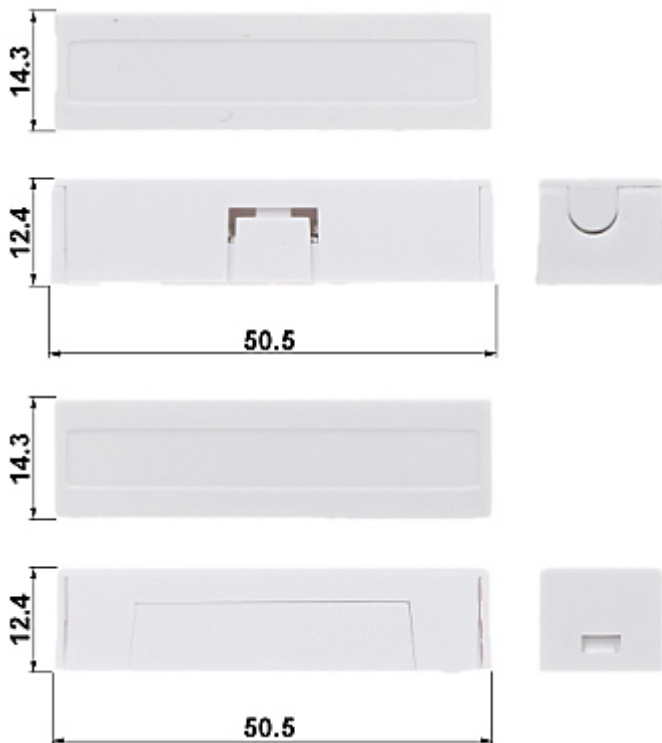
Detection:	Opening the door or window
Maximum reed switched voltage:	20 V
Maximal switched current:	20 mA
Make distance:	18 mm
Break distance:	28 mm
Main features:	<ul style="list-style-type: none">• Plastic (ABS)• NC output - a magnet close to a reed switch - does not trigger an alarm, the contacts are closed• Connectors : screw terminals• Leads out the cables : On the long edge
Color:	White
Weight:	0.02 kg
Dimensions:	50.5 x 14.3 x 12.4 mm
Guarantee:	2 years

PRESENTATION

Internal view of the housing:



Dimensions:



In the kit:



PACKAGE

Dimensions (L x W x H): 0x0x0 mm	Gross Weight: 0 kg
----------------------------------	--------------------