

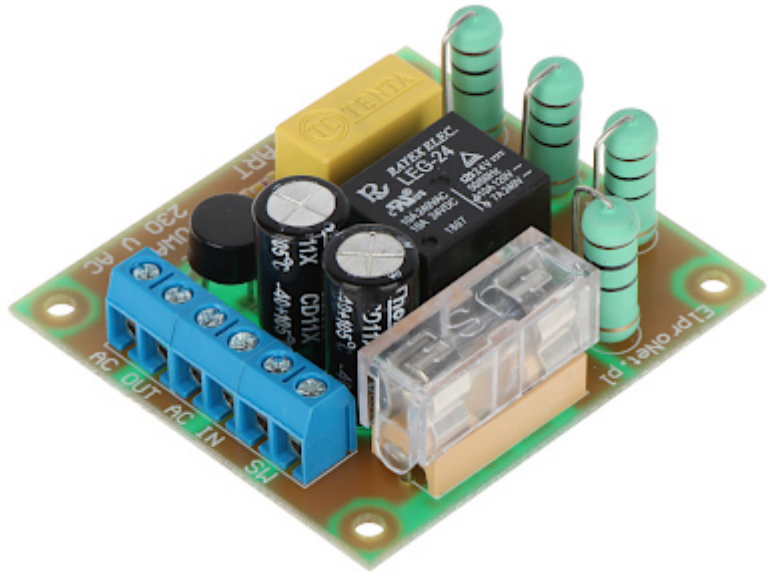
Code: SF-1

SOFT START MODULE SF-1

Net: 7.35 EUR Gross: 7.35 EUR

"Soft Start" module limits temporarily high inrush current of the inductive receivers at power up. The module is used as delayed current protection of the toroidal transformers, auto-transformers and halogen lamps.

DANGER! Lethal voltage on board. Use extreme caution! Module should be mounted in enclosures with electrically insulating material with keeping the proper insulating distances.

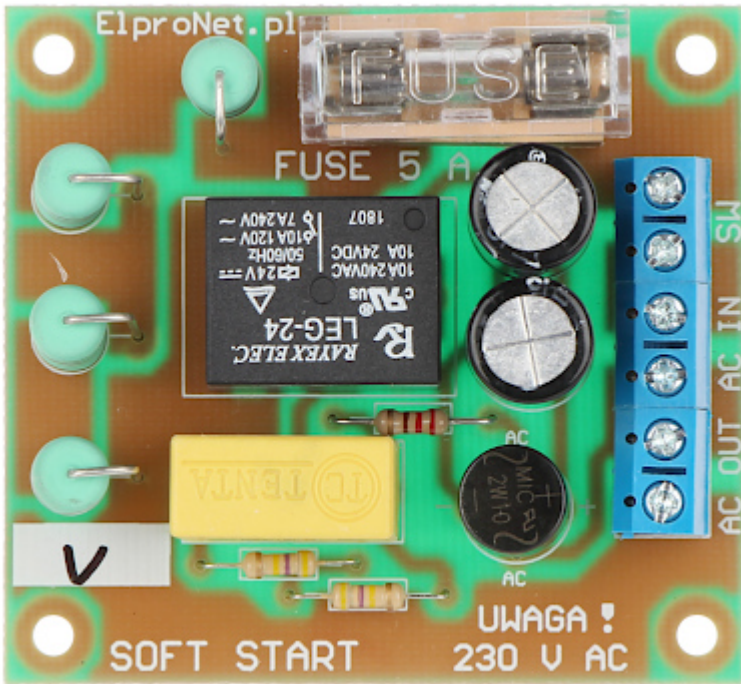


SPECIFICATION

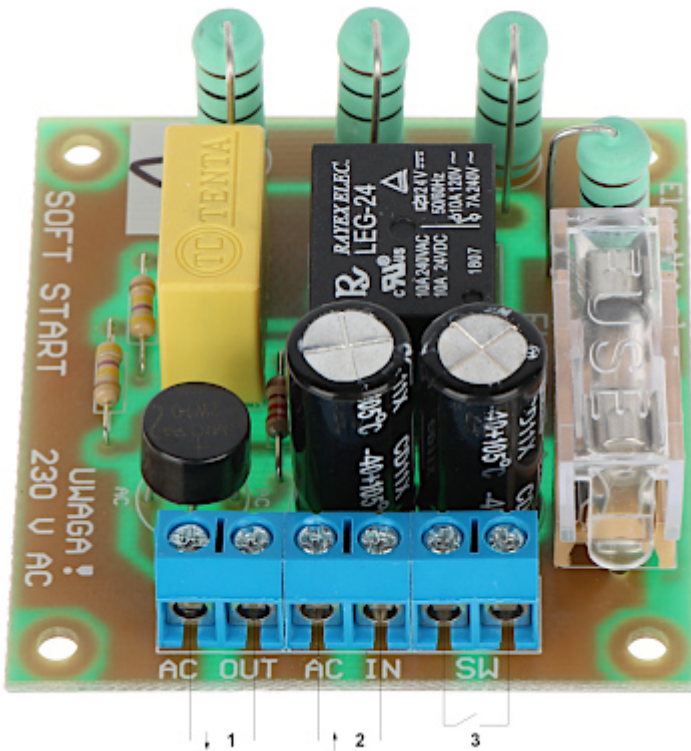
Number of control inputs:	1
Number of power inputs:	1
Number of power outputs:	1
Voltage:	230 V AC
Maximal output power:	1150 W
Protection type:	5 A 5/20mm delayed fuse
Connectors type:	3 x screw terminals max. 1.5 mm ²
Montage hole diameter:	3 mm
Mounting holes distance:	52 x 47 mm
Dimensions:	60 x 55 x 28 mm
Weight:	0.04 kg
Guarantee:	2 years

PRESENTATION

Top view:



Connectors view:



1. To receiver
2. 230 V AC input
3. Switch or lock

PACKAGE

Dimensions (L x W x H): 0x0x0 mm	Gross Weight: 0 kg
----------------------------------	--------------------