

Code: LZ-4/POL

POWER SUPPLY DISTRIBUTOR LZ-4/POL

Net: 7.23 EUR Gross: 7.23 EUR

The LZ-4/POL is a passive device and allows to distribute the power supply.

The housing of the LZ-4/POL has been prepared for mounting with screws to a wall or with a tie to a mast (tie, screws - not included).

An unquestionable advantage of employing the LZ-4/POL in monitoring systems powered from a central point is additional tamper protection. Without individual protection for each power line, an intruder can stop powering of the whole system just by shorting out the power line of the single camera.

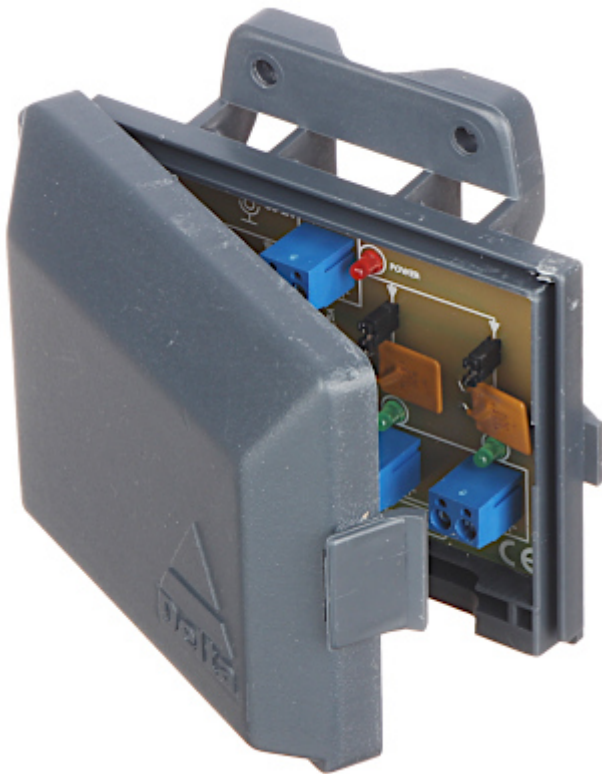
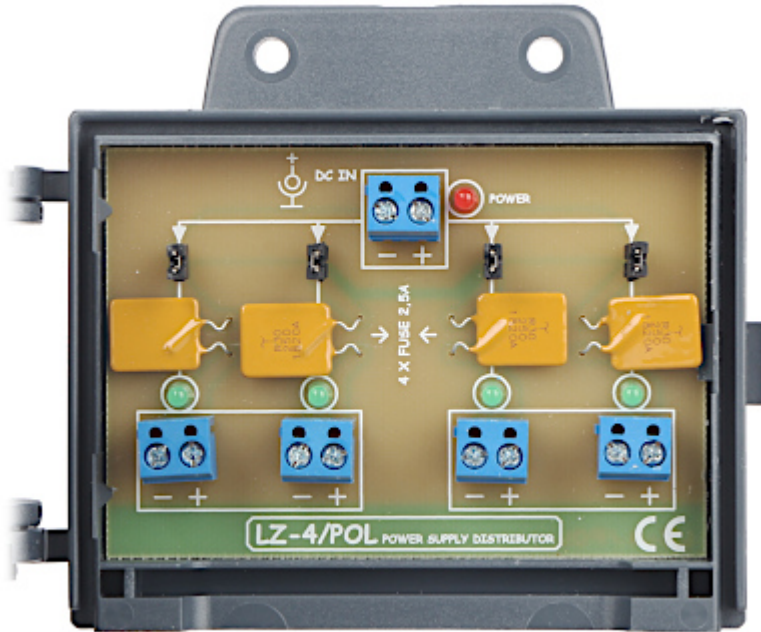


SPECIFICATION

| | |
|--|---|
| Number of power inputs: | 1 |
| Number of power outputs: | 4 |
| Maximal power voltage: | 24 V DC (typical 12V) |
| Maximal power supply current: | 10 A |
| Max. output current for single output: | 2.5 A |
| Protection type: | 4 x 2.5 A Polymer fuse |
| Power connectors type: | Input : Cable terminals Output : Cable terminals |
| Operation temp: | -50 °C ... 55 °C |
| Permissible relative humidity: | < 95 % |
| Dimensions: | 120 x 91 x 37 mm |
| Weight: | 0.090 kg |
| Manufacturer / Brand: | DELTA |
| Guarantee: | 3 years |

PRESENTATION

ATTENTION! In case of using the power adapters with short-circuit protection built-in, this protection can work earlier than polymer fuse:



The housing construction enables easy mounting the device on a wall or mast, using tie for example:



PACKAGE

| | |
|----------------------------------|--------------------|
| Dimensions (L x W x H): 0x0x0 mm | Gross Weight: 0 kg |
|----------------------------------|--------------------|

