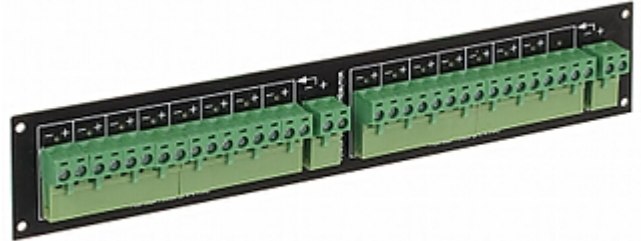


Code: LZ-16/POL/R

POWER SUPPLY DISTRIBUTOR LZ-16/POL/R

Net: 20.18 EUR Gross: 20.18 EUR

The LZ-16/POL/R is a passive device that enables power ordered distribution from one or several higher power units.
If necessary the terminals can be connected in parallel.

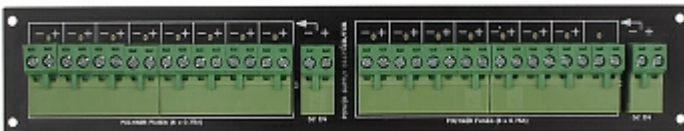


SPECIFICATION

Number of power outputs:	16 (2 x 8 outputs)
Number of power inputs:	2 (one per each 8-outputs terminal)
Maximal power voltage:	24 V DC (typical 12V)
Maximal power supply current:	5 A (for single terminal)
Max. output current for single output:	0.75 A
Protection type:	16 x 0.75 A - Polymer fuse
Power connectors type:	Input : Cable terminals Output : Cable terminals
Operation temp:	-50 °C ... 55 °C
Permissible relative humidity:	< 95 %
Housing type:	PCB
Weight:	0.1 kg
Dimensions:	216 x 40 x 18 mm
Manufacturer / Brand:	DELTA
Guarantee:	3 years

PRESENTATION

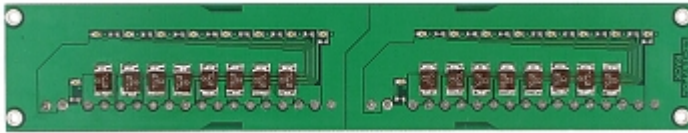
Front panel:



Rear view:



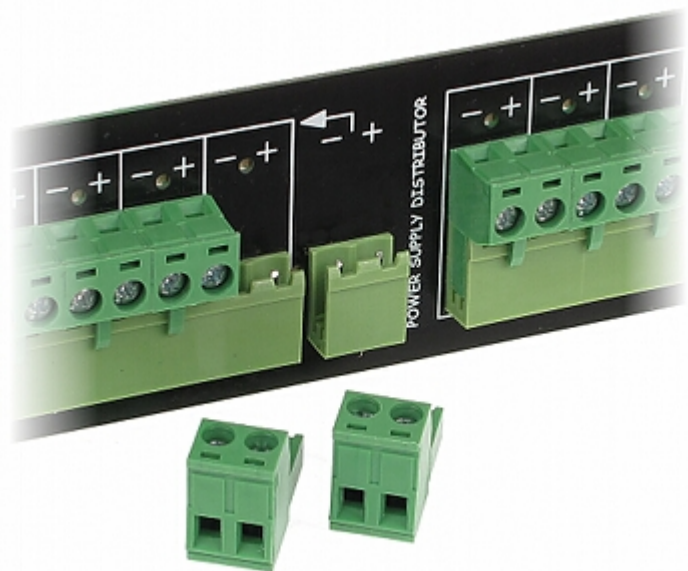
DELTA-OPTI Monika Matysiak; <https://www.delta.poznan.pl>
POL; 60-713 Poznań; Graniczna 10
e-mail: delta-opti@delta.poznan.pl; tel: +(48) 61 864 69 60



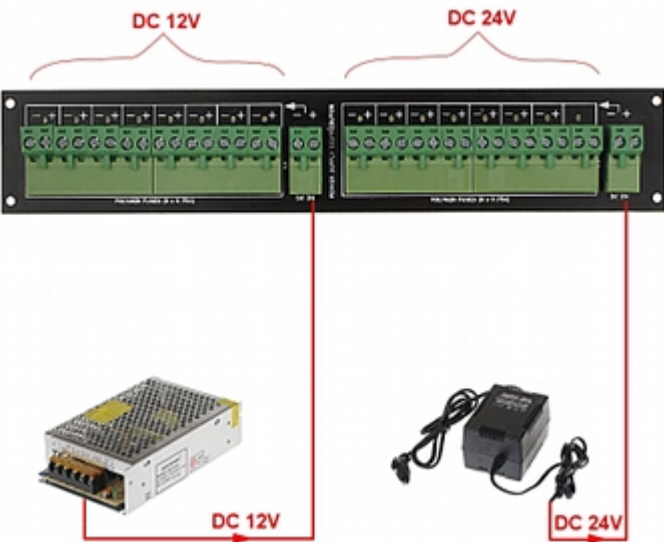
Top view:



All terminals are separable:



Schematic diagram of distributor application with two different voltages option:



The LZ-16/POL/R device is designed to mount in the A19-FRAME panel or as the separate device:



Preparing the device to assembly in RACK cabinet.

Attention! At assembled example two LZ-16/POL/R devices and one A19-FRAME mounting panel were used.
In the kit:



The self-adhesive distance elements allow to easy PCB assembly.

PACKAGE

Dimensions (L x W x H): 0x0x0 mm	Gross Weight: 0 kg
----------------------------------	--------------------

