

Code: GT-CI22P2-28VF

# IP CAMERA **GT-CI22P2-28VF** - 1080p 2.8 ... 12 mm GEMINI TECHNOLOGY

Net: **279.03 PLN** Gross: **279.03 PLN**

IP camera with efficient H.264 image compression algorithm for clear and smooth video streaming at maximal resolution of 1080p (2.4 MPx).

PoE powering possibility, compatible with the 802.3af standard makes the device more universal and easier to install.

ATTENTION! For a few models of IP cameras working at  $\geq 1920 \times 1080$  resolution we recommend to use of network with 1Gb/s bandwidth.



## SPECIFICATION

Standard:	TCP/IP
Sensor:	1/2.9 " Sony CMOS IMX323
Digital Image Processor:	Hisilicon 3516C
Matrix size:	2.43 Mpx
Resolution:	1920 x 1080 - 1080p 1280 x 960 - 1.3 Mpx 1280 x 720 - 720p 960 x 540 - qHD 720 x 576 - D1
Lens:	2.8 ... 12 mm
View angle:	• 84 ° ... 23 ° (manufacturer data) • 85 ° ... 30 ° (our tests result)
S/N ratio:	> 50 dB
Range of IR illumination:	30 m
Memory card slot:	—
Image compression method:	H.264, MJPEG
Alarm inputs / outputs:	—
Bitrate:	16 ... 8000 kbps
Main stream frame rate:	max. 25 fps - 1080p
Network interface:	10/100 Base-T (RJ-45)
Network protocols:	TCP, HTTP, UDP, DHCP, RTSP, DDNS, NTP, PPPoE, UPnP, SNMP, ONVIF
Audio:	—

DELTA-OPTI Monika Matysiak; <https://www.delta.poznan.pl>  
POL; 60-713 Poznań; Graniczna 10  
e-mail: [delta-opti@delta.poznan.pl](mailto:delta-opti@delta.poznan.pl); tel: +(48) 61 864 69 60

WEB Server:	Built-in
Max. number of on-line users:	10
RS-485 interface:	—
Mobile phones support:	Port no.: 5800 or access by a cloud (P2P) <ul style="list-style-type: none"> <li>• Android: Free application <a href="#">Fseye</a></li> <li>• iOS: Free application <a href="#">Fseye</a></li> </ul>
Default admin user / password:	admin / (null)
Default IP address:	192.168.1.188
Web browser access ports:	80, 554, 1935
PC client access ports:	5050, 5051, 5052
WEB Server:	Built-in
Mobile client access ports:	5800
Port ONVIF:	80
ONVIF:	2.21
RTSP URL:	rtsp://ip_address:554/ch01.264 - Main stream rtsp://ip_address:554/ch01_sub.264 - Sub stream
Application:	The camera is designed for indoor use, due to the possibility of steam condensation.
Main features:	<ul style="list-style-type: none"> <li>• ICR - Movable InfraRed filter</li> <li>• 3D-DNR - Digital Noise Reduction</li> <li>• D-WDR - Wide Dynamic Range</li> <li>• AGC - Automatic Gain Control</li> <li>• Possibility to change the resolution, quality and bit rate</li> <li>• Additional "Spot" CVBS output - allows to quick view the image from camera and its configuration without the need to disconnect it from monitoring system</li> <li>• Time mark and image description</li> <li>• Image rotation and mirror</li> <li>• Configurable: brightness, contrast, saturation</li> <li>• Privacy zones</li> <li>• Motion Detection</li> <li>• Sharpness - sharper image outlines</li> <li>• Day/Night mode - configurable</li> <li>• Possibility to add different privileges to the users</li> </ul>
Vandal-proof:	—
Power supply:	<ul style="list-style-type: none"> <li>• PoE (802.3af),</li> <li>• 12 V DC / 450 mA</li> </ul>
Power consumption:	≤ 5.4 W
Housing:	Dome - Plastic
Color:	White
"Index of Protection":	IP44
Operation temp:	-10 °C ... 55 °C
Weight:	0.36 kg
Dimensions:	Ø 127 x 102 mm
Supported languages:	English, Polish
Manufacturer / Brand:	GEMINI TECHNOLOGY
Guarantee:	2 years

## PRESENTATION

Camera view after remove the Dome cover - camera lens adjustment knobs are visible:



DELTA-OPTI Monika Matysiak; <https://www.delta.poznan.pl>  
POL; 60-713 Poznań; Graniczna 10  
e-mail: [delta-opti@delta.poznan.pl](mailto:delta-opti@delta.poznan.pl); tel: +(48) 61 864 69 60



Mounting side view:



Mounting dimensions:



In the kit:

DELTA-OPTI Monika Matysiak; <https://www.delta.poznan.pl>  
POL; 60-713 Poznań; Graniczna 10  
e-mail: [delta-opti@delta.poznan.pl](mailto:delta-opti@delta.poznan.pl); tel: +(48) 61 864 69 60

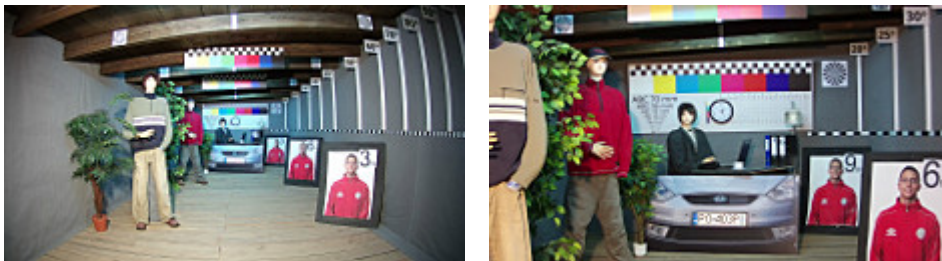


Package:



## OUR TESTS

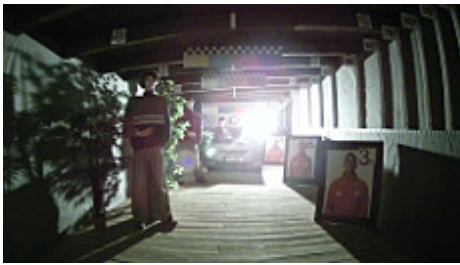
Camera image at artificial illumination (about 30Lux):



Camera image at night conditions with internal built-in IR illuminator on:



Camera image at direct strong light opposite to camera:



## OUR OPINIONS



- Very well working motion detection with GT-Nxx-xxx DVR models cooperation.

## PACKAGE

Dimensions (L x W x H): 0x0x0 mm	Gross Weight: 0 kg
----------------------------------	--------------------

