

Code: DH-IPC-HDW4831EMP-AS

IP CAMERA **DH-IPC-HDW4831EMP-AS** - 8.3 Mpx 4 mm DAHUA

Net: **3 558.33 SEK** Gross: **3 558.33 SEK**



IP camera with efficient H.264/H.265/MJPEG image compression algorithm for clear and smooth video streaming at maximal resolution of 3840 x 2160 (8.3 MPx). PoE powering possibility, compatible with the 802.3af standard makes the device more universal and easier to install.

Camera is according to IP67 Index of Protection norm.

SPECIFICATION

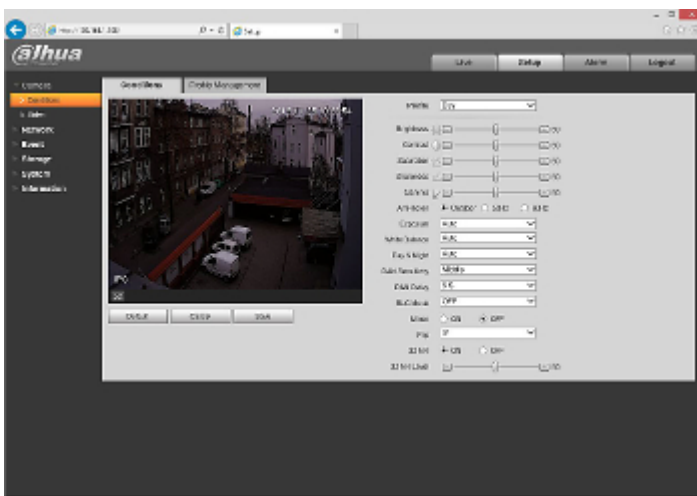
Standard:	TCP/IP
Sensor:	1/2.5 " Progressive Scan CMOS
Scanning system:	Progressive
Matrix size:	8.3 Mpx
Resolution:	3840 x 2160 - 8.3 Mpx , 3072 x 2048 - 6.3 Mpx , 3072 x 1728 - 5.3 Mpx , 2592 x 1944 - 5.0 Mpx , 2688 x 1520 - 4.0 Mpx , 2560 x 1440 - 3.7 Mpx , 2304 x 1296 - 3 Mpx , 1920 x 1080 - 1080p , 1280 x 1024 - 1.4 Mpx , 1280 x 960 - 1.3 Mpx , 1280 x 720 - 720p
Lens:	4 mm
View angle:	<ul style="list-style-type: none">• 88 ° (manufacturer data)• 86 ° (our tests result)
Range of IR illumination:	50 m
S/N ratio:	> 50 dB
Memory card slot:	Micro SD memory cards up to 128GB support (possible local recording)
Image compression method:	H.265 / H.264 / MJPEG
Alarm inputs / outputs:	—

DELTA-OPTI Monika Matysiak; <https://www.delta.poznan.pl>
POL; 60-713 Poznań; Graniczna 10
e-mail: delta-opti@delta.poznan.pl; tel: +(48) 61 864 69 60

Audio:	<ul style="list-style-type: none"> • Microphone built-in • Audio detection
Bitrate:	24 kb/s ... 10240 kb/s - H.264 14 kb/s ... 9984 kb/s - H.265
Main stream frame rate:	15 fps @ 8.3 Mpx 20 fps @ 6.3 Mpx 25 fps @ 5.3 Mpx
Network interface:	10/100 Base-T (RJ-45)
Network protocols:	HTTP, HTTPS, TCP, ARP, RTSP, RTP, UDP, SMTP, FTP, DHCP, DNS, DDNS, PPPoE, IPv4/IPv6, QoS, UPnP, NTP, Bonjour, IEEE 802.1x, Multicast, ICMP, IGMP, SNMP
WEB Server:	Built-in
Max. number of on-line users:	20
ONVIF:	16.12
Main features:	<ul style="list-style-type: none"> • 3D-DNR - Digital Noise Reduction • WDR - 120 dB - Wide Dynamic Range • ICR - Movable InfraRed filter • BLC/HLC - Back Light / High Light Compensation • Possibility to change the resolution, quality and bit rate • Configurable Privacy Zones • Motion Detection • Mirror - Mirror image • Audio detection • IVS analysis : scene changing, crossing the line (tripwire), intrusion, abandoned/missing object, face detection
Mobile phones support:	Port no.: 37777 or access by a cloud (P2P) <ul style="list-style-type: none"> • Android: Free application DMSS, Android: Free application IMOU • iOS (iPhone): Free application DMSS, iOS (iPhone): Free application IMOU
Default IP address:	192.168.1.108
Default admin user / password:	admin / admin
Web browser access ports:	80, 37777
PC client access ports:	37777
Mobile client access ports:	37777
Port ONVIF:	80
RTSP URL:	rtsp://admin:haslo@192.168.1.108:554/cam/realmonitor?channel=1&subtype=0 - Main stream rtsp://admin:haslo@192.168.1.108:554/cam/realmonitor?channel=1&subtype=1 - Sub stream
Color:	White
Vandal-proof:	—
Power supply:	<ul style="list-style-type: none"> • PoE (802.3af), • 12 V DC / 500 mA
Power consumption:	< 6 W
Housing:	Dome, Metal
"Index of Protection":	IP67
Operation temp:	-30 °C ... 60 °C
Dimensions:	Ø 106 x 94 mm
Weight:	0.47 kg
Supported languages:	English, Polish
Manufacturer / Brand:	DAHUA
Guarantee:	3 years



Example captures of device interface:



See the ability of operation in imou cloud:

:

OUR TESTS

Camera image at artificial illumination (about 30Lux):



Camera image at night conditions with internal built-in IR illuminator on:



Camera image at direct strong light opposite to camera:



PACKAGE

Dimensions (L x W x H): 0x0x0 mm	Gross Weight: 0 kg
----------------------------------	--------------------

