

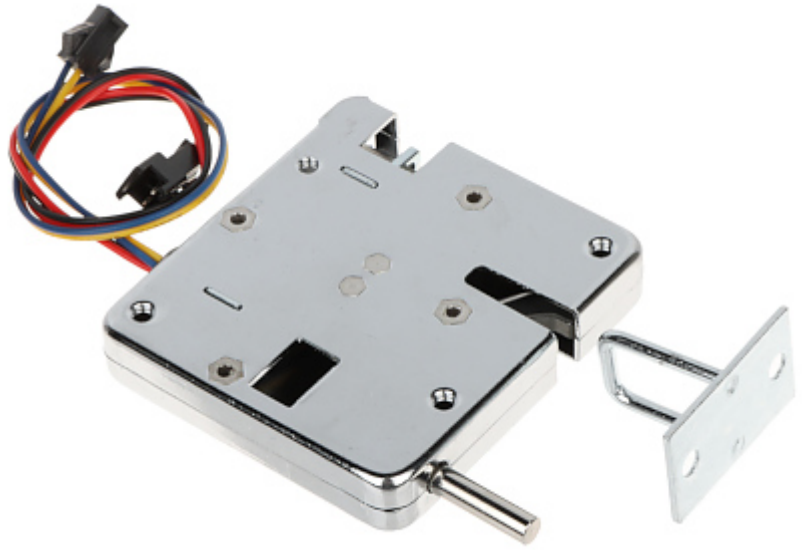
Code: DT-813

ELECTROMAGNETIC CABINET LOCK **DT-813** DANTOM

Net: **10.56 EUR** Gross: **10.56 EUR**

The DT-813 cabinet lock allows for convenient and safe management of access to cabinets or deposit boxes in places such as: airports, shopping centers, swimming pools, gyms, sports halls, etc. The lock has been equipped with a spring lever, thanks to which the cabinet door will automatically open when unlocked.

Due to its construction, the lock remains closed in the event of a power failure. It is possible to release the lock of the lock mechanically, but it requires direct access to the mechanism.

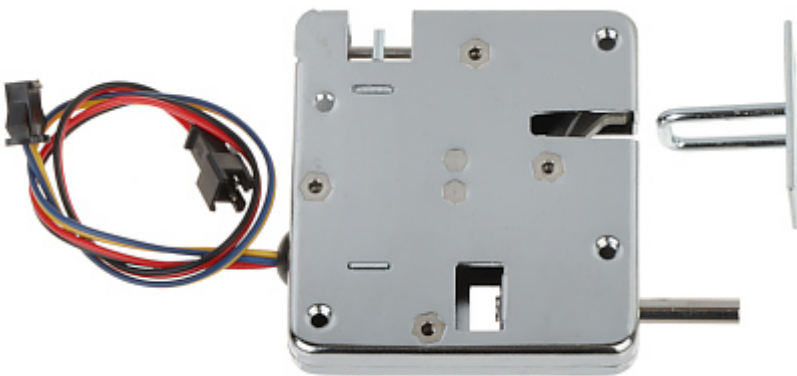
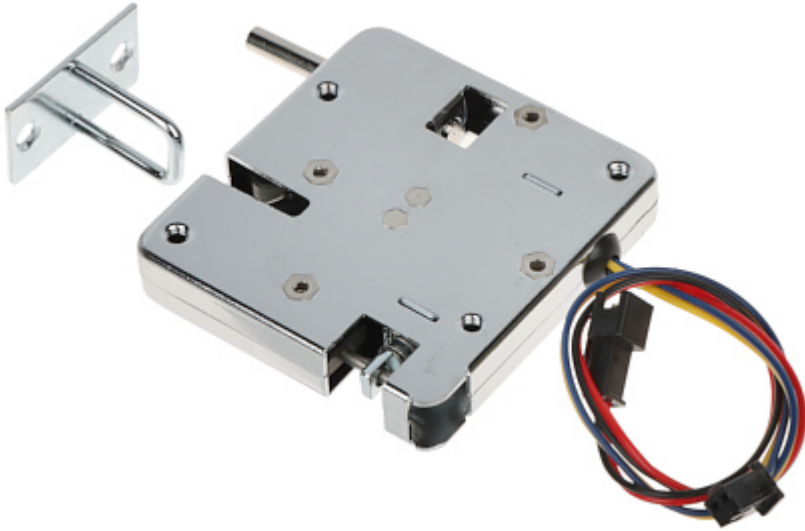


SPECIFICATION

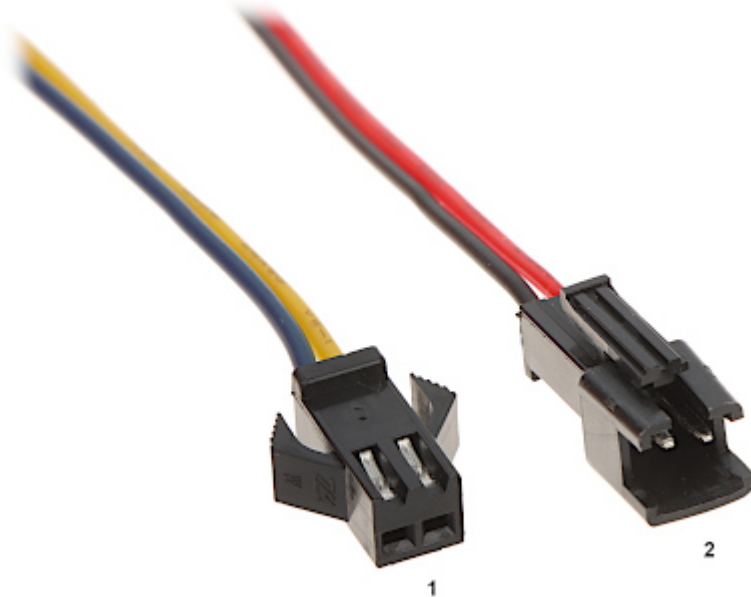
| | |
|---|--|
| Rated voltage: | 12 V DC |
| Current consumption: | 1.8 A |
| Application: | right-side door / left-side door |
| Ratched lock: | — |
| Memory function: | — |
| Reverse action: | — |
| Clearance adjustment: | — |
| Main features: | <ul style="list-style-type: none">• Built-in spring lever• Maximum diameter of the lock latch : 3 mm• Possibility of mechanical unlocking of the lock mechanism• Lock state check |
| Allowable uninterrupted operation time: | 10 s |
| Weight: | 0.14 kg |
| Dimensions: | 70 x 65 x 13 mm |
| Manufacturer / Brand: | DANTOM |
| Guarantee: | 2 years |

PRESENTATION

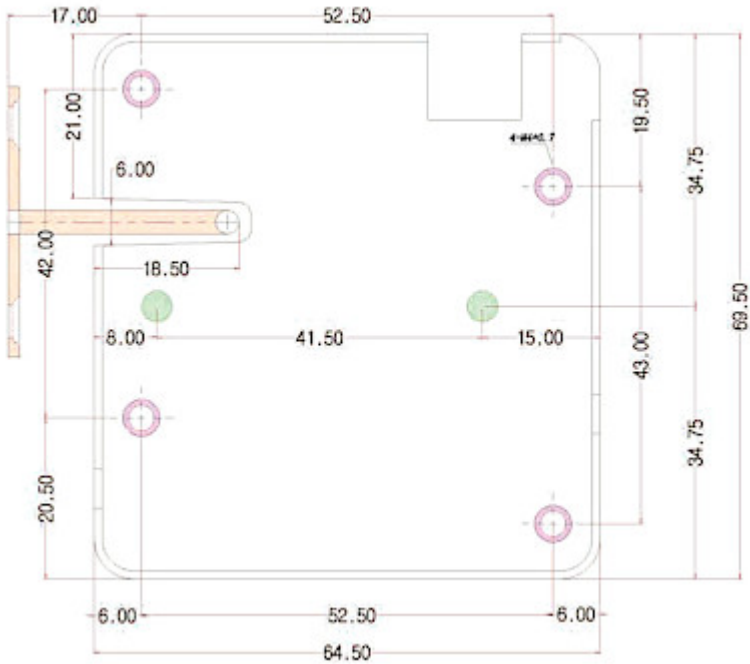
DELTA-OPTI Monika Matysiak; <https://www.delta.poznan.pl>
POL; 60-713 Poznań; Graniczna 10
e-mail: delta-opti@delta.poznan.pl; tel: +(48) 61 864 69 60



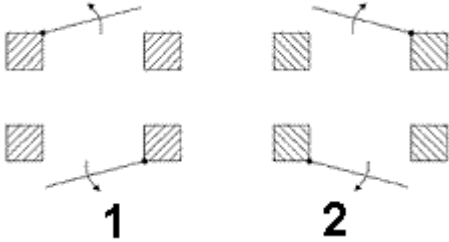
Connectors:



1. Lock state check
 2. Power supply
- Dimensions:



Determination of the left- and right side doors:



- 1). right-side door
- 2). left-side door

PACKAGE

| | |
|----------------------------------|--------------------|
| Dimensions (L x W x H): 0x0x0 mm | Gross Weight: 0 kg |
|----------------------------------|--------------------|

