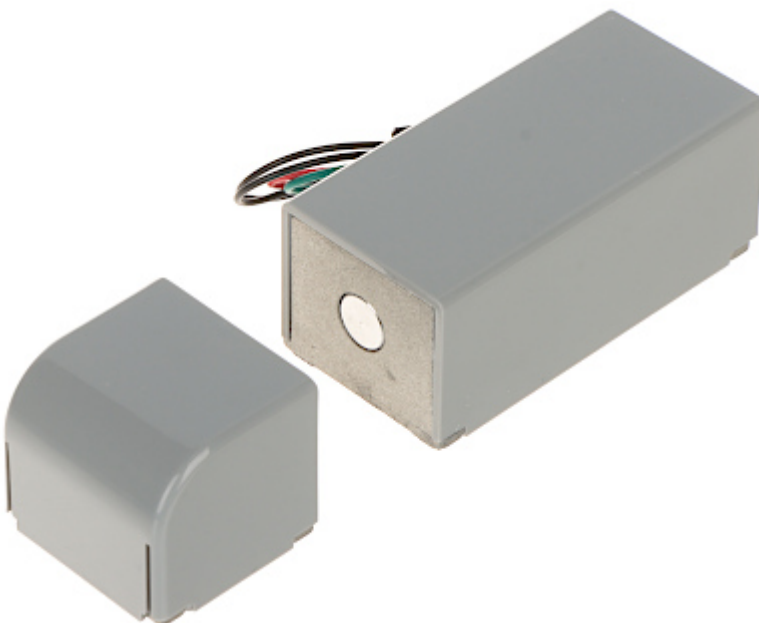


Code: DT-3033

# ELECTROMAGNETIC CABINET BOLT **DT-3033** REVERSIBLE DANTOM

Net: **18.11 EUR** Gross: **18.11 EUR**

Reversible electromagnetic bolt designed for installation in cabinets and lockers in places such as: changing rooms, swimming pools, airports, shopping centers, luggage storage rooms, etc.

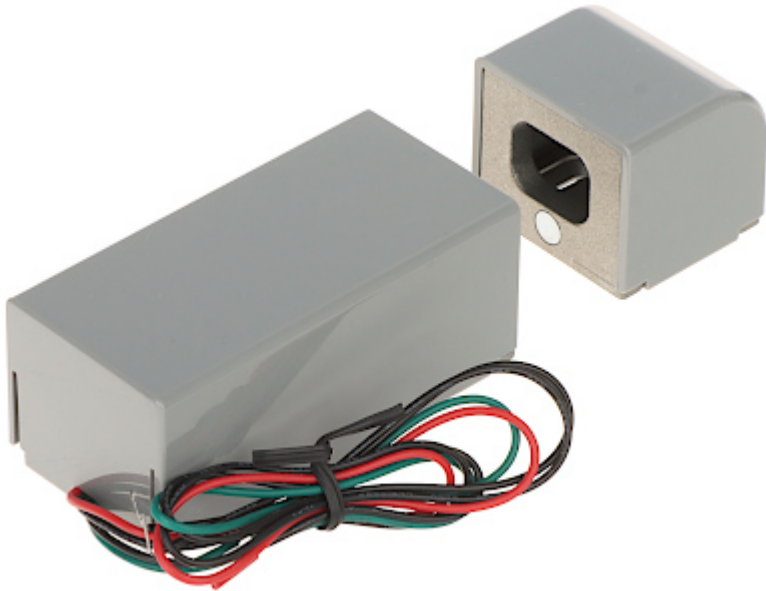


## SPECIFICATION

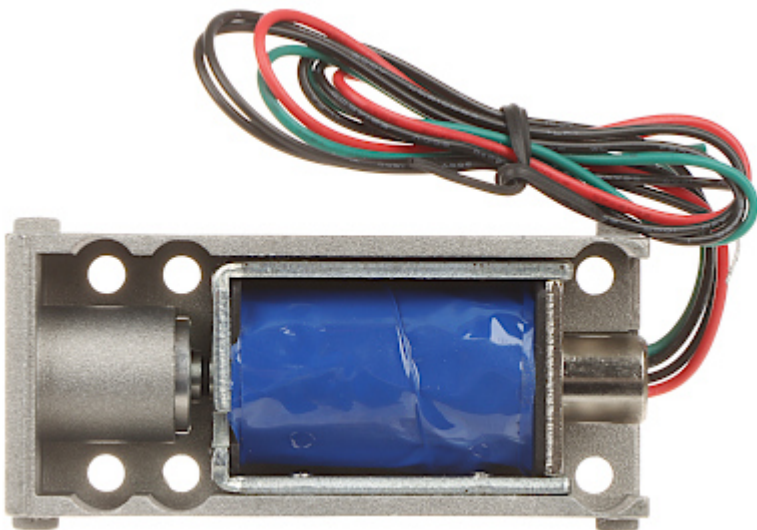
Rated voltage:	12 V DC
Current consumption:	300 mA
Application:	right-side door / left-side door
Ratched lock:	—
Memory function:	—
Reverse action:	After a power outage the door will be unlocked
Clearance adjustment:	—
Allowable uninterrupted operation time:	unlimited
Main features:	<ul style="list-style-type: none"><li>• Lock state check - NO contact</li><li>• Bolt slide out distance : 9 mm</li><li>• Surface mounting (can be used on narrow door frames)</li></ul>
Weight:	0.27 kg (total)
Dimensions:	74 x 36 x 31 mm - Electromagnetic lock 33 x 36 x 30 mm - Clamp
Manufacturer / Brand:	DANTOM
Guarantee:	2 years

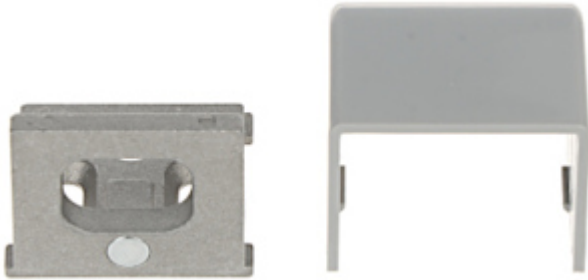
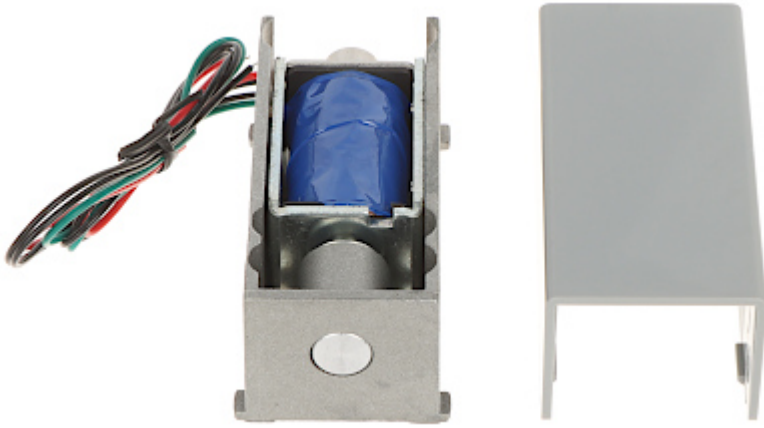
## PRESENTATION

DELTA-OPTI Monika Matysiak; <https://www.delta.poznan.pl>  
POL; 60-713 Poznań; Graniczna 10  
e-mail: [delta-opti@delta.poznan.pl](mailto:delta-opti@delta.poznan.pl); tel: +(48) 61 864 69 60

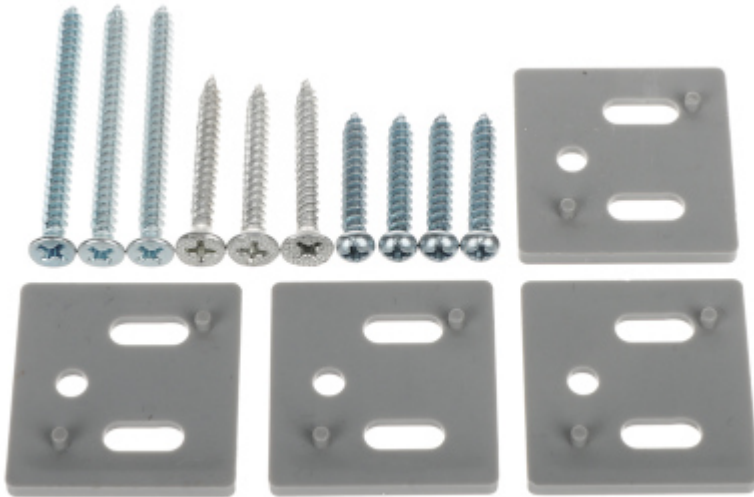


Internal view of the housing:





In the kit:



## PACKAGE

Dimensions (L x W x H): 0x0x0 mm	Gross Weight: 0 kg
----------------------------------	--------------------

