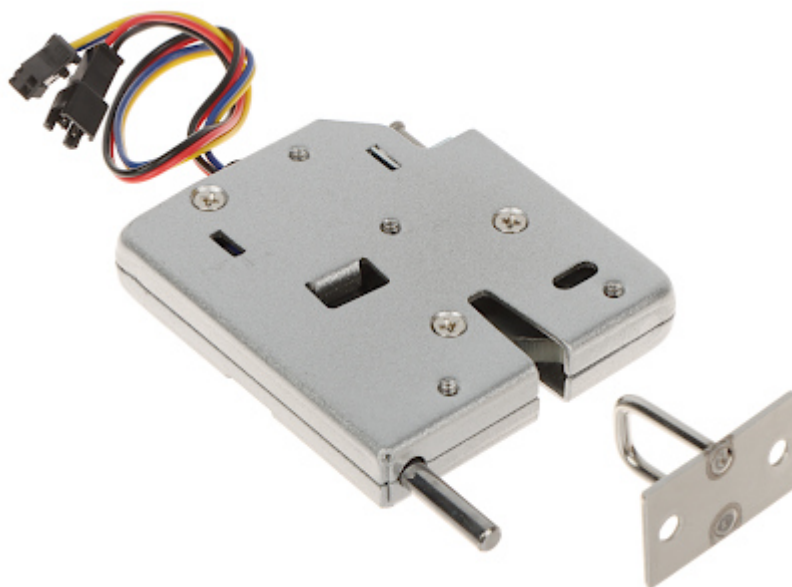


Code: ATLO-DT-C07

ELECTROMAGNETIC CABINET LOCK ATLO-DT-C07

Net: 4.18 EUR Gross: 4.18 EUR



The ATLO-DT-C07 cabinet lock allows for convenient and safe management of access to cabinets or deposit boxes in places such as: airports, shopping centers, swimming pools, gyms, sports halls, etc. The lock has been equipped with a spring lever, thanks to which the cabinet door will automatically open when unlocked.

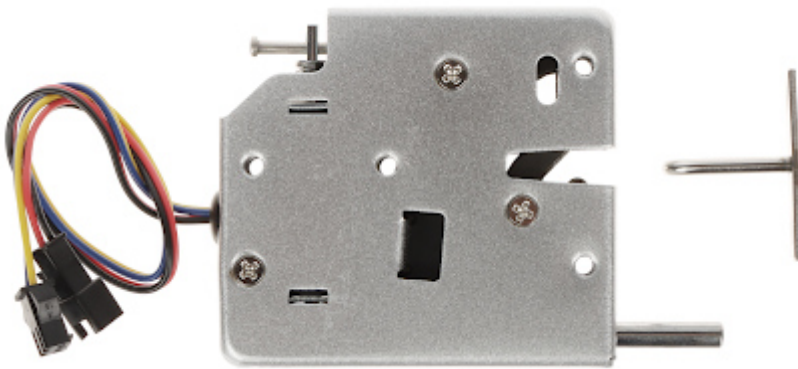
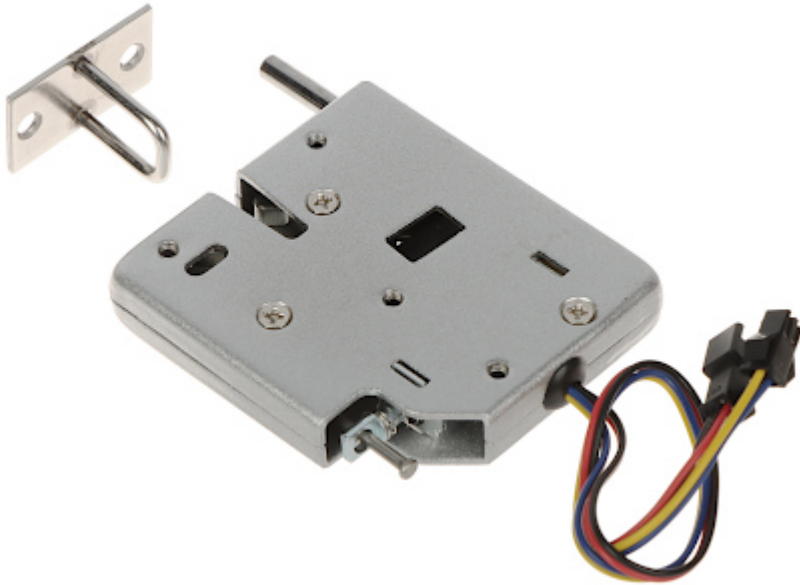
Due to its construction, the lock remains closed in the event of a power failure. It is possible to release the lock of the lock mechanically, but it requires direct access to the mechanism.

SPECIFICATION

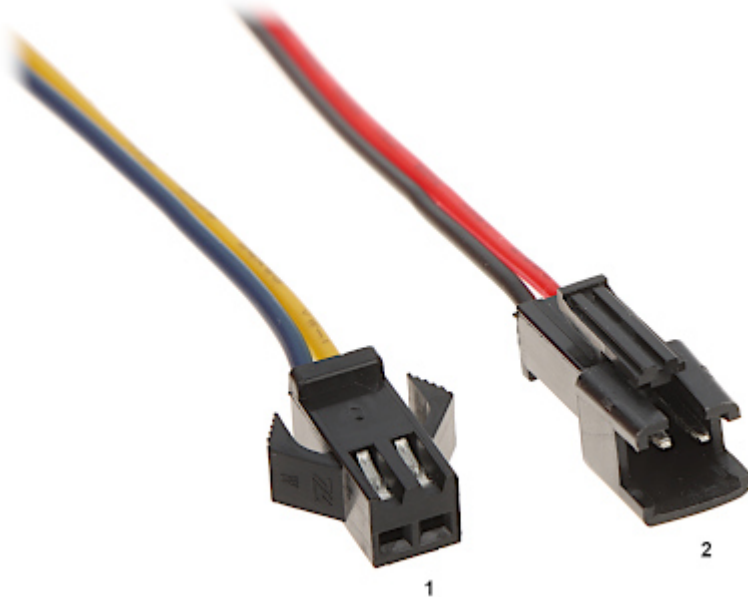
Rated voltage:	12 V DC
Current consumption:	2 A
Application:	right-side door / left-side door
Ratched lock:	—
Memory function:	—
Reverse action:	—
Clearance adjustment:	—
Main features:	<ul style="list-style-type: none">• Built-in spring lever,• Maximum diameter of the lock latch : 3 mm,• Possibility of mechanical unlocking of the lock mechanism• Lock state check• Color : Silver
Allowable load of the door impacting the lock:	150 kg
Weight:	<ul style="list-style-type: none">• 0.18 kg - Door lock (strike)• 0.01 kg - Staple
Dimensions:	<ul style="list-style-type: none">• 73 x 66 x 14 mm - Door lock (strike)• 35 x 20 x 25 mm - Staple
Manufacturer / Brand:	ATLO
Guarantee:	2 years

PRESENTATION

DELTA-OPTI Monika Matysiak; <https://www.delta.poznan.pl>
POL; 60-713 Poznań; Graniczna 10
e-mail: delta-opti@delta.poznan.pl; tel: +(48) 61 864 69 60



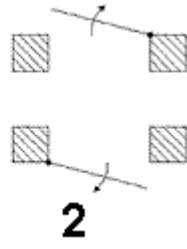
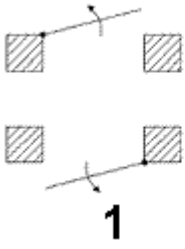
Connectors:



1. Lock state check
2. Power supply

Determination of the left- and right side doors:





- 1). right-side door
- 2). left-side door

PACKAGE

Dimensions (L x W x H): 0x0x0 mm	Gross Weight: 0 kg
----------------------------------	--------------------

