

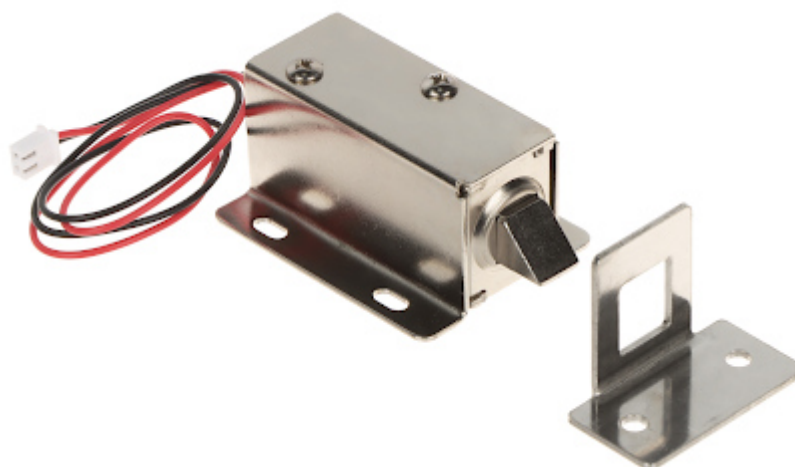
Code: ATLO-DT-L08

ELECTROMAGNETIC CABINET LOCK ATLO-DT-L08

Net: 8.52 EUR Gross: 8.52 EUR

The ATLO-DT-L08 cabinet lock allows for convenient and safe management of access to cabinets or deposit boxes in places such as: airports, shopping centers, swimming pools, gyms, sports halls, etc.

Due to its construction, the lock remains closed in the event of a power failure.

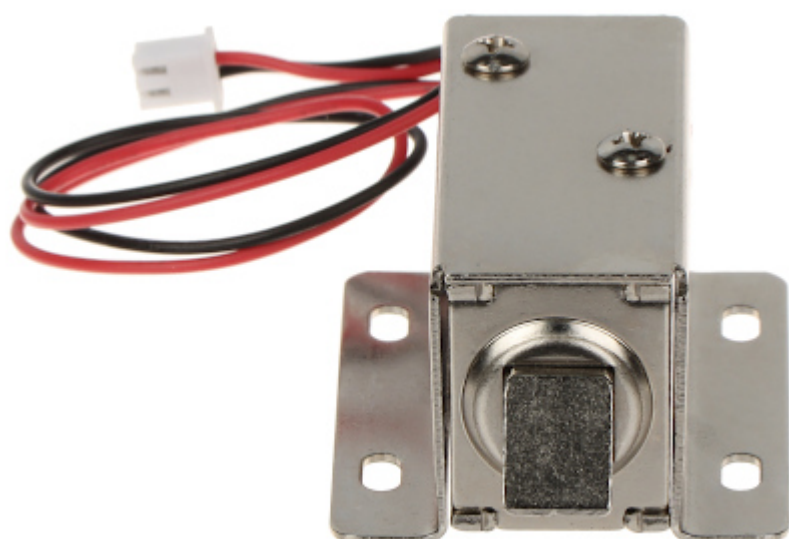
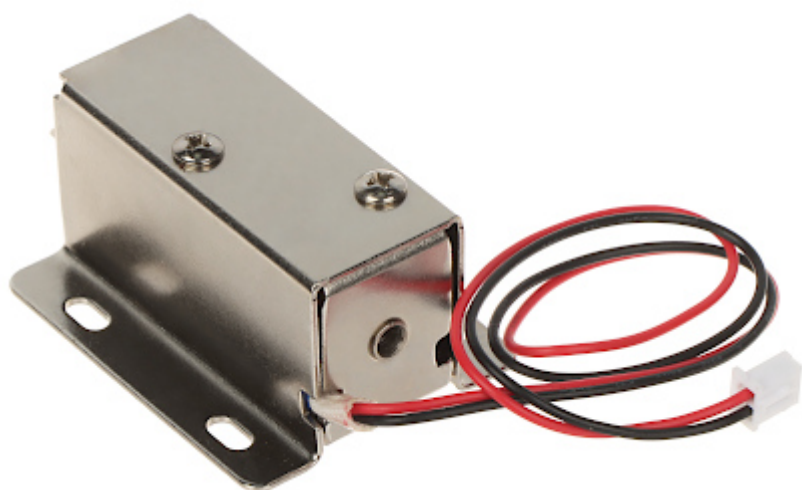


SPECIFICATION

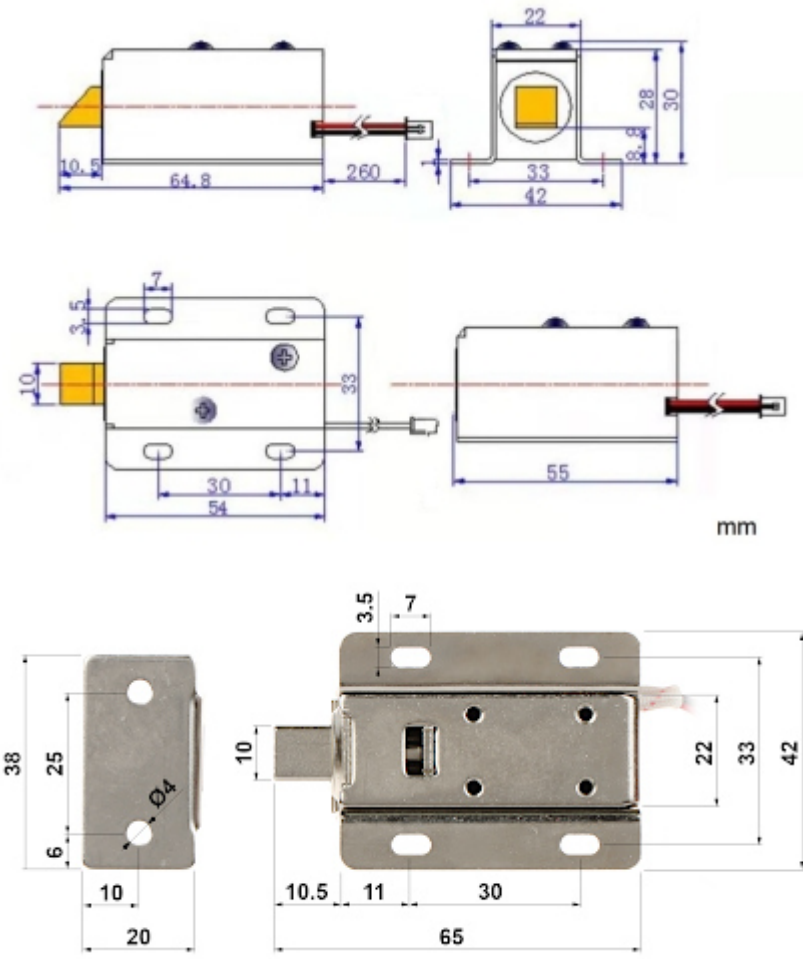
Rated voltage:	12 V DC
Current consumption:	0.8 A
Application:	right-side door / left-side door
Ratched lock:	—
Memory function:	—
Reverse action:	—
Clearance adjustment:	—
Main features:	<ul style="list-style-type: none">• The lock remains closed when it is not powered - bolt extended• Bolt slide out distance : 10.5 mm• Opening with a voltage impulse : < 1 s ... max. 10 s
Allowable uninterrupted operation time:	≤ 10 s
Weight:	<ul style="list-style-type: none">• 0.152 kg - Door lock (strike)• 0.014 kg - Staple
Dimensions:	<ul style="list-style-type: none">• 54 x 42 x 28 mm - Door lock (strike)• 38 x 20 x 29 mm - Staple
Manufacturer / Brand:	ATLO
Guarantee:	2 years

PRESENTATION

The product has a very small dimensions:



Dimensions:

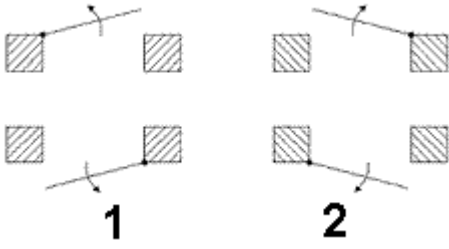


mm

Connector:



Determination of the left- and right side doors:



PACKAGE

Dimensions (L x W x H): 0x0x0 mm	Gross Weight: 0 kg
----------------------------------	--------------------

