

Code: MK-1.5/POD-V2

FOOTING FOR MASTS MK-1.5/POD-V2

Net: 115.00 EUR Gross: 141.45 EUR

Mast base for free-standing truss masts from MK-1.5 series.

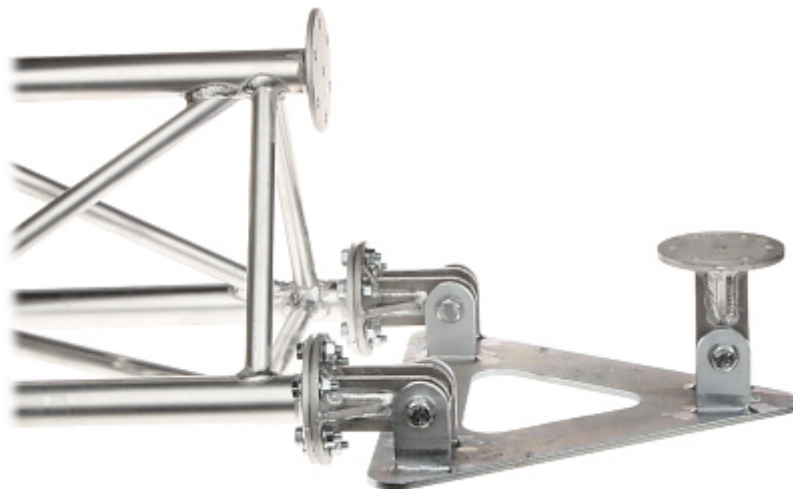


SPECIFICATION

Material:	<ul style="list-style-type: none">• Steel galvanized,• Aluminum
Main features:	The design allows the mast to tilt up to 115° from the vertical (max)
Weight:	4.24 kg
Dimensions:	345 x 345 x 127 mm
Guarantee:	3 years
Manufacturer / Brand:	DELTA

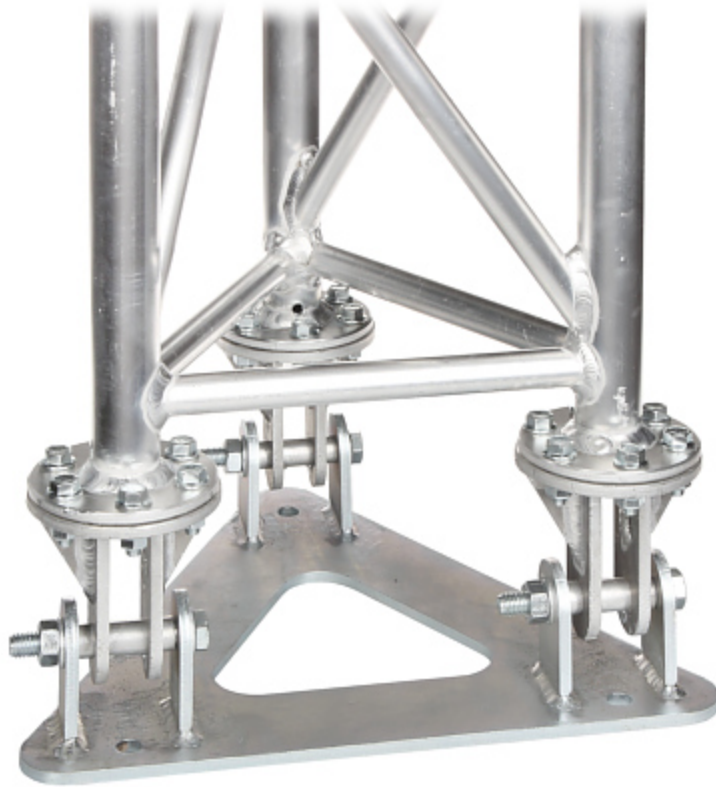
PRESENTATION

Hinges allow to tilt the mast to the horizontal position:

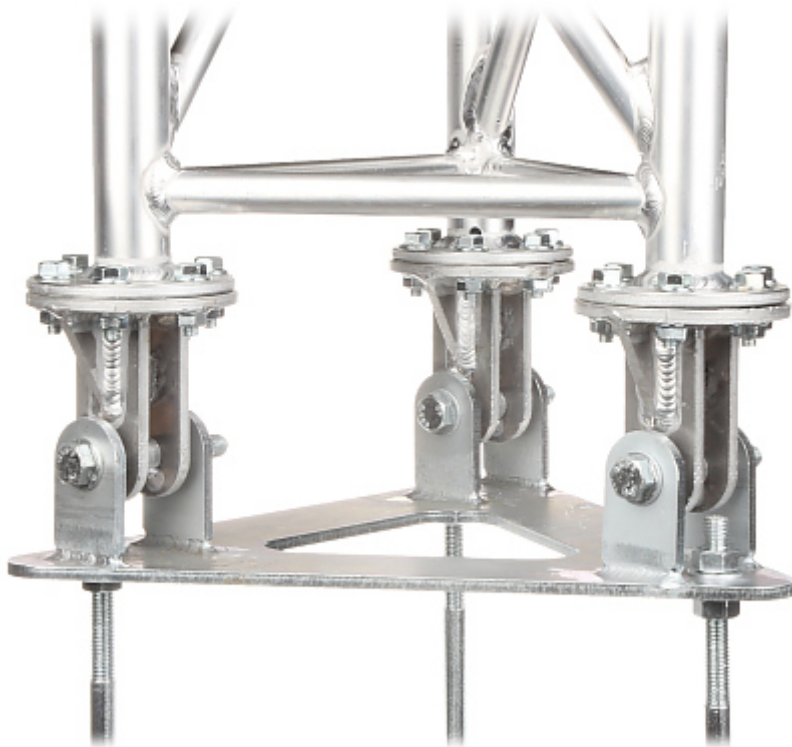


DELTA-OPTI Monika Matysiak; <https://www.delta.poznan.pl>
POL; 60-713 Poznań; Graniczna 10
e-mail: delta-opti@delta.poznan.pl; tel: +(48) 61 864 69 60

The MK-1.5/POD base with the MK-1.5 truss mast:



The MK-1.5/POD base mounted to the MK-1.5/KOT anchor and the MK-1.5 truss mast:





Prepared form-work for the foundation of the mast:



Poured foundation of the mast with embedded anchor and established base:



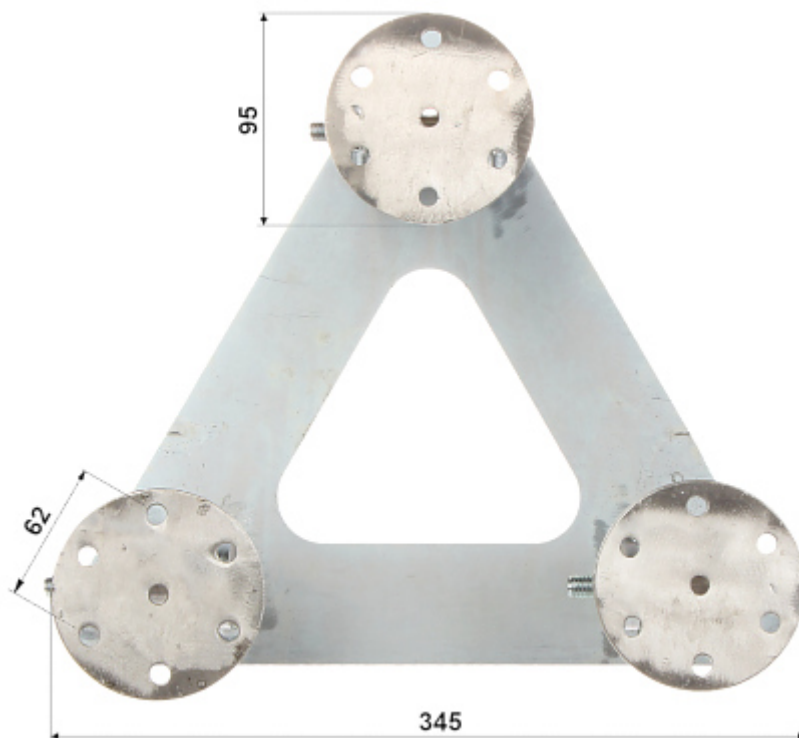
Ready foundation with the set mast:



Bottom view:



Top view:



Side view:

