

Code: MK-1.5/KOT

ANCHOR FOR CONCRETE **MK-1.5/KOT**

Net: **66.00 PLN** Gross: **81.18 PLN**



SPECIFICATION

Application:	To the masts series : MK-1.5
Material:	<ul style="list-style-type: none">• Steel,• Steel galvanized
Rod diameter:	Ø 12 mm
Dimensions:	450 x 85 x 37 mm
Weight:	1.4 kg
Guarantee:	3 years
Manufacturer / Brand:	DELTA

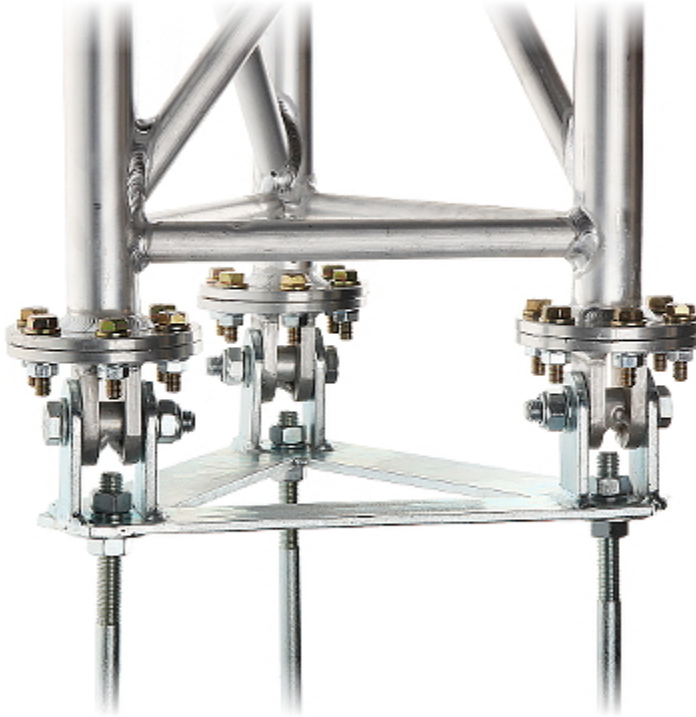
PRESENTATION

Thread on the anchor enables mast leveling:

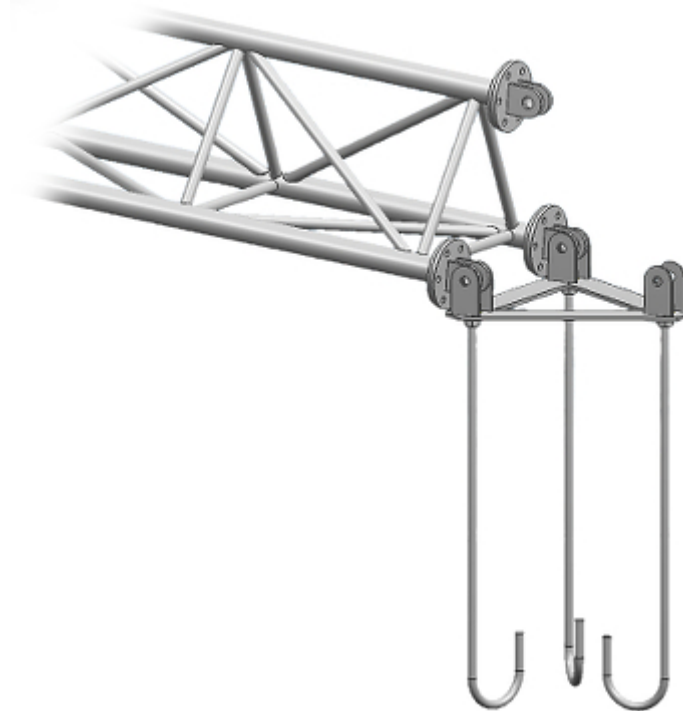


DELTA-OPTI Monika Matysiak; <https://www.delta.poznan.pl>
POL; 60-713 Poznań; Graniczna 10
e-mail: delta-opti@delta.poznan.pl; tel: +(48) 61 864 69 60

The MK-1.5/POD base mounted to the MK-1.5/KOT anchor and the MK-1.5 framework structure:



Schematic diagram:



Prepared form-work for the foundation of the mast:



Poured foundation of the mast with embedded anchor and established base:



Ready foundation with the set mast:



In the kit:



DELTA-OPTI Monika Matysiak; <https://www.delta.poznan.pl>
POL; 60-713 Poznań; Graniczna 10
e-mail: delta-opti@delta.poznan.pl; tel: +(48) 61 864 69 60



DELTA-OPTI Monika Matysiak; <https://www.delta.poznan.pl>
POL; 60-713 Poznań; Graniczna 10
e-mail: delta-opti@delta.poznan.pl; tel: +(48) 61 864 69 60