

Code: TL-SF1005LP

SWITCH POE **TL-SF1005LP** 5-PORT TP-LINK

Net: **38.08 EUR** Gross: **38.08 EUR**

Due to reliability and ensuring high quality of transmission, the TL-SF1005LP 10/100 Mb/s 5-port PoE desktop type switch is perfect solution for expanding home or office network. Four ports support Power over Ethernet (PoE) function.

Switch has the priority function which will help protect the system when the system power is overloaded. The power consumption of the devices powered by PoE is up to 41W. The devices connected to the ports with higher priority are powered in the first place.

Attention! Order of priority: port-1 > port-2 > port-3 > port-4. This feature protects the system in case of overloading.



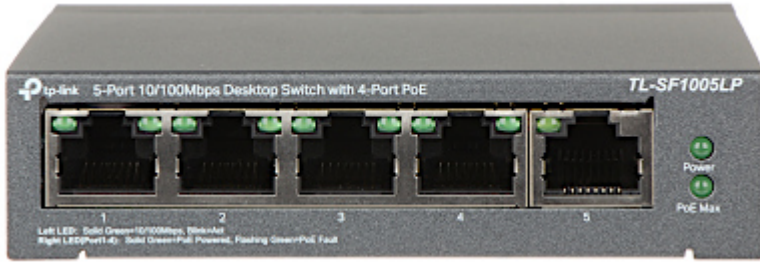
SPECIFICATION

LAN ports:	5 x RJ45 (4 PoE)
Management:	—
LED diodes:	Power, Link/Act, PoE, PoE Max
Transmission speed:	10 / 100 Mbps : 1 Port LAN + 4 LAN & PoE ports
Maximal output power:	15.4 W / port PoE
Maximal total power:	41 W
MAC addresses table:	2k
Operation modes:	<ul style="list-style-type: none">• Extend On : 250 m, 10 Mbps @ UTP cat. 5e, 6 - 1 ... 4 ports• Extend Off : 100 m, 100 Mbps @ UTP cat. 5e, 6
Main features:	<ul style="list-style-type: none">• High priority ports : 1 ... 2 ports - Dedicated to video transmission• Support of the 3 network modes: Priority, Standard, Extend• (RJ45) 10/100 Mb Auto-Negotiation, Auto MDI/MDIX• IEEE802.3x Flow Control
Certificates:	FCC, CE, RoHS
Power supply:	53.5 V DC / 0.81 A (power adapter included)
Weight:	0.23 kg
Dimensions:	100 x 98 x 25 mm
Manufacturer / Brand:	TP-LINK
Guarantee:	3 years

PRESENTATION

Front panel:

DELTA-OPTI Monika Matysiak; <https://www.delta.poznan.pl>
POL; 60-713 Poznań; Graniczna 10
e-mail: delta-opti@delta.poznan.pl; tel: +(48) 61 864 69 60



1. LAN + PoE
 2. LAN + PoE
 3. LAN + PoE
 4. LAN + PoE
 5. LAN
- Rear view:



In the kit:



PACKAGE

Dimensions (L x W x H): 0x0x0 mm	Gross Weight: 0 kg
----------------------------------	--------------------



DELTA-OPTI Monika Matysiak; <https://www.delta.poznan.pl>
POL; 60-713 Poznań; Graniczna 10
e-mail: delta-opti@delta.poznan.pl; tel: +(48) 61 864 69 60