

Code: S-64H

SWITCH POE **S-64H** 4-PORT PULSAR

Net: **105.32 EUR** Gross: **105.32 EUR**



The S-64H switch is designed to supply IP cameras operating in the IEEE 802.3af/at standard. The device with the power supply adapter is enclosed in a housing with IP56 protection class. Four ports support Power over Ethernet (PoE) function.

SPECIFICATION

| | |
|-----------------------|---|
| LAN ports: | <ul style="list-style-type: none">• 4 x RJ45 10/100 Base-TX - PoE (802.3af/at),• 2 x RJ45 10/100 Base-TX - Uplink ports |
| Management: | — |
| Transmission speed: | <ul style="list-style-type: none">• 10 / 100 Mbps - 4 LAN & PoE ports,• 10 / 100 Mbps - 2 Uplink ports |
| Maximal output power: | 30 W / port PoE |
| Maximal total power: | 60 W |
| MAC addresses table: | 1k |
| Operation modes: | <ul style="list-style-type: none">• Extend On : 250 m, 10 Mbps @ UTP cat. 5e, 6• Extend Off : 100 m, 100 Mbps @ UTP cat. 5e, 6 |
| Main features: | There are cable glands in the housing : <ul style="list-style-type: none">• 6 pcs Ø 4 ... 8 mm• 1 pcs Ø 10 ... 14 mm |
| Certificates: | CE |
| Power supply: | 52 V DC / 1.15 A (power adapter included) |
| Housing: | Plastic, IP56 |
| Weight: | 1.25 kg |
| Dimensions: | 148 x 240 x 80 mm |
| Manufacturer / Brand: | PULSAR |
| Guarantee: | 2 years |



DELTA-OPTI Monika Matysiak; <https://www.delta.poznan.pl>
POL; 60-713 Poznań; Graniczna 10
e-mail: delta-opti@delta.poznan.pl; tel: +(48) 61 864 69 60

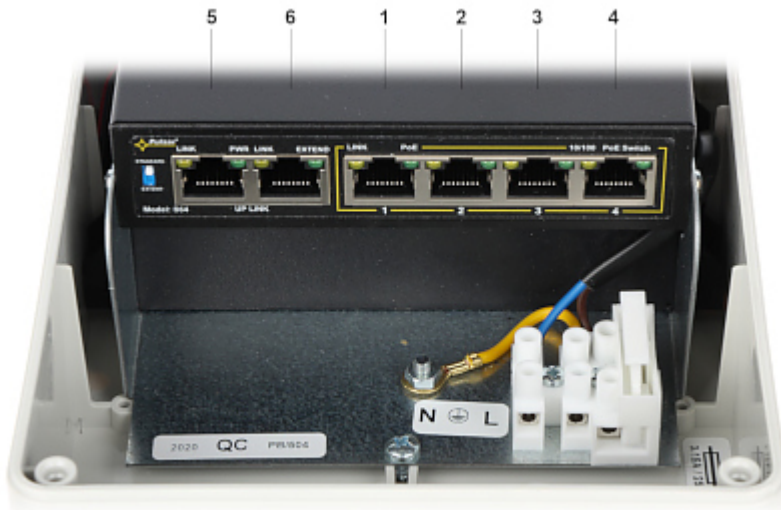
PRESENTATION

Bottom view:



Internal view:



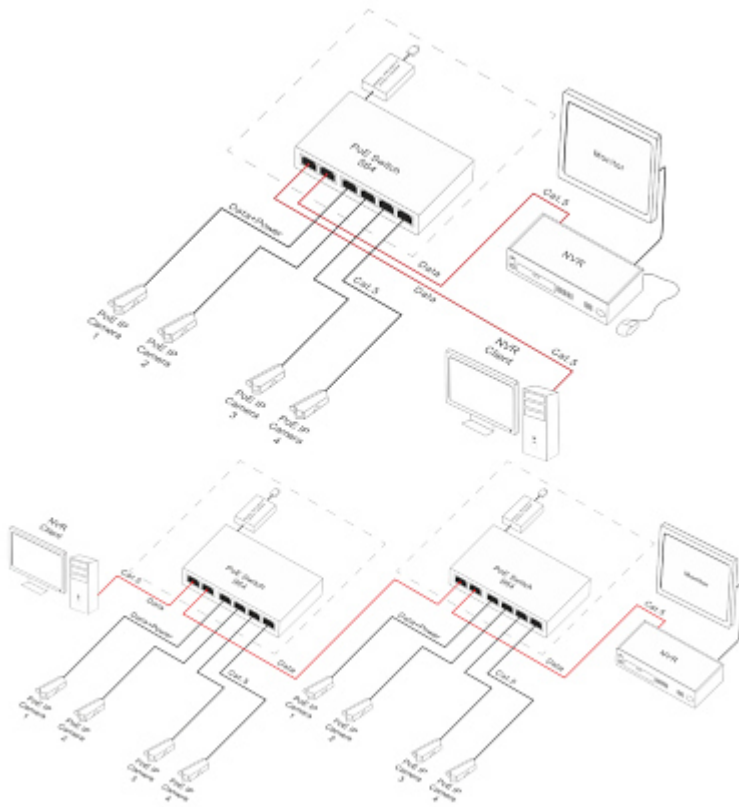


- 1 - LAN + PoE
 - 2 - LAN + PoE
 - 3 - LAN + PoE
 - 4 - LAN + PoE
 - 5 - Port Uplink
 - 6 - Port Uplink
- Top view:



Examples of connection diagrams:





PACKAGE

| | |
|----------------------------------|--------------------|
| Dimensions (L x W x H): 0x0x0 mm | Gross Weight: 0 kg |
|----------------------------------|--------------------|

