

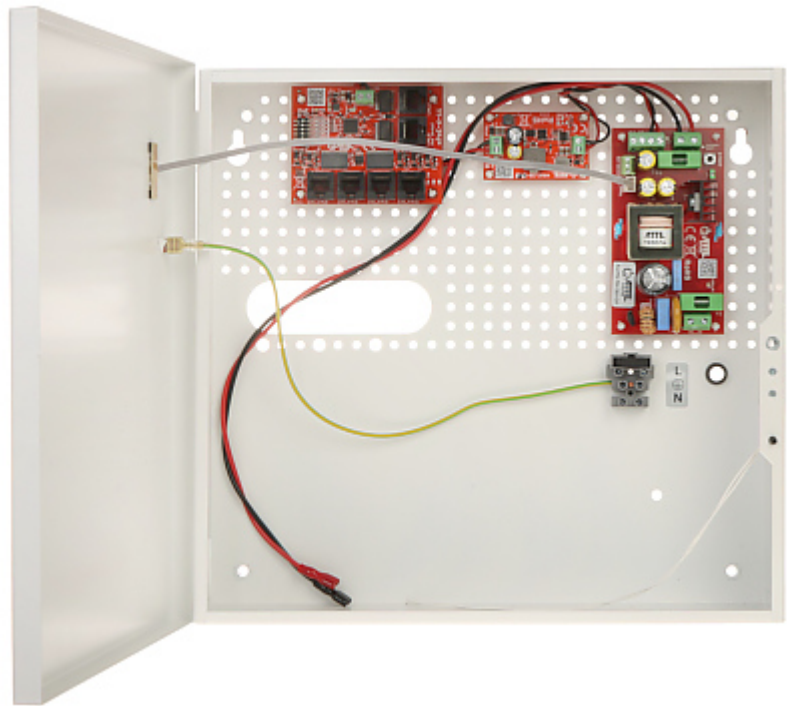
Code: IPUPS-5-11-F

POE SWITCH WITH BUFFERED POWER SUPPLY **IPUPS-5-11-F** 5-PORT ATTE

Net: **165.73 EUR** Gross: **203.85 EUR**

5-port PoE switch in an internal enclosure with a buffered power supply. 5 ports support Power over Ethernet (PoE) function.

The IPUPS-5-11-F set consists of XPOE-6-11-OF switch module, AUPS-70-120-OF buffered power supply module and ASUC-50-480-OF voltage converter module enclosed in the ABOX-F internal enclosure with space for 18Ah battery. The buffered PSUs are adapted to work with maintenance-free batteries (gel or AGM) with nominal voltage 12V.



SPECIFICATION

LAN ports:	<ul style="list-style-type: none">• 1 x RJ45 10/100 Base-T - Uplink,• 5 x RJ45 10/100 Base-T + PoE (802.3af/at) / Passive PoE
Management:	—
LED diodes:	AC, DC, CHARGING (battery charging), PoE
Transmission speed:	<ul style="list-style-type: none">• 10 / 100 Mbps : 1 x Port Uplink,• 10 / 100 Mbps : 5 x Port LAN & PoE
Maximal output power:	<ul style="list-style-type: none">• 40 W @ Passive PoE - LAN1 ... LAN4 ports,• 60 W @ Passive PoE - Port LAN5,• 30 W @ PoE (802.3af/at) - LAN1 ... LAN5 ports
Maximal total power:	60 W
Operation modes:	<ul style="list-style-type: none">• Standard : 100 m @ 10/100 Mb/s - LAN1 ... LAN6 ports• Long Range : 280 m @ 10 Mb/s - LAN1 ... LAN4 ports ; 100 m @ 10/100 Mb/s - LAN5, LAN6 ports



DELTA-OPTI Monika Matysiak; <https://www.delta.poznan.pl>
POL; 60-713 Poznań; Graniczna 10
e-mail: delta-opti@delta.poznan.pl; tel: +(48) 61 864 69 60

Main features:	<ul style="list-style-type: none"> • The ability to independently turn on and off the PoE power for each of the LAN 1 ... LAN 5 ports • The modular design streamlines service tasks and enables quick and easy system expansion • The raster system of module assembly facilitates the expansion of the device by further modules • Place for battery : 12 V / 18 Ah • Battery charging current : 1 A / 2 A - (set with the JP1 jumper) • Battery - Protection against reverse polarity connection, Protection against deep discharge of the battery • Technical outputs of the OC type signaling loss of voltage at the PSU output (OUF) and loss of voltage in the 230V mains (ACF) • PSU thermal protection : 130 °C • Overload protection • LAN & PoE ports - Short-circuit protection, Overvoltage • TAMPER switch indicating open the cover • "Index of Protection" : IP20
Power supply:	190 ... 260 V AC
Weight:	2.4 kg
Dimensions:	325 x 305 x 100 mm
Manufacturer / Brand:	ATTE
Guarantee:	3 years

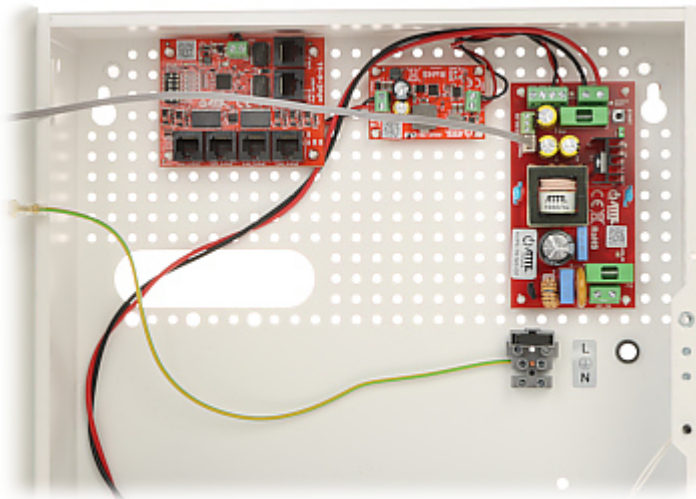
PRESENTATION



Internal view of the housing:



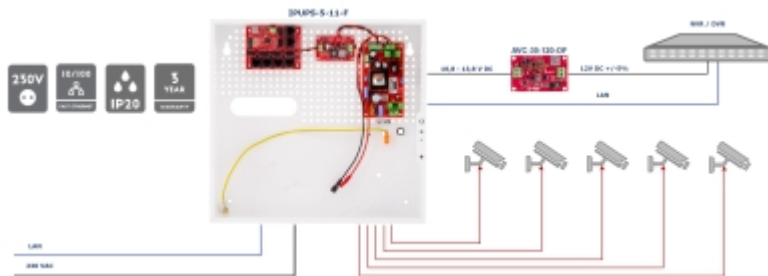
DELTA-OPTI Monika Matysiak; <https://www.delta.poznan.pl>
 POL; 60-713 Poznań; Graniczna 10
 e-mail: delta-opti@delta.poznan.pl; tel: +(48) 61 864 69 60



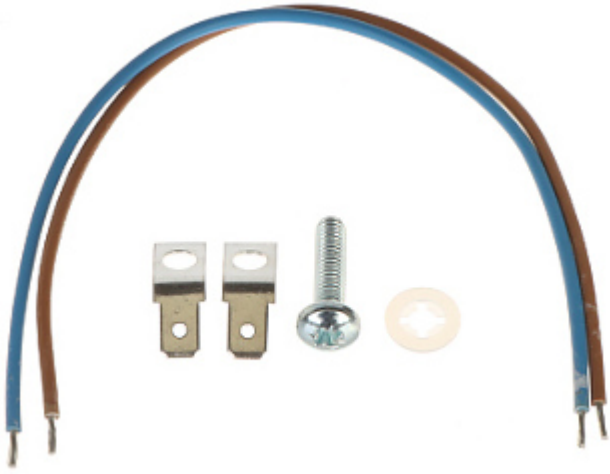
Mounting side view:



Example of application:



In the kit:



PACKAGE

Dimensions (L x W x H): 0x0x0 mm	Gross Weight: 0 kg
----------------------------------	--------------------

