

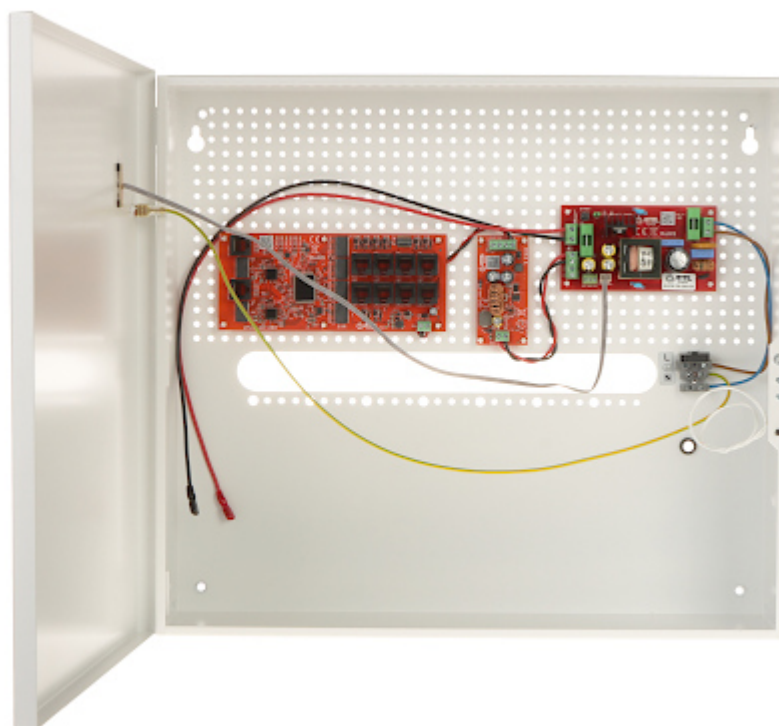
Code: IPUPS-8-20-H

POE SWITCH WITH BUFFERED POWER SUPPLY **IPUPS-8-20-H** 8-PORT ATTE

Net: **299.03 EUR** Gross: **367.81 EUR**

8-port PoE switch in an internal enclosure with a buffered power supply. 8 ports support Power over Ethernet (PoE) function.

The IPUPS-8-20-H set consists of XPOE-10-20A-OF switch module, AUPS-70-120-OF buffered power supply module and ASUC-100-480-OF voltage converter module enclosed in the ABOX-H internal enclosure with space for 2 18Ah batteries. The buffered PSUs are adapted to work with maintenance-free batteries (gel or AGM) with nominal voltage 12V.



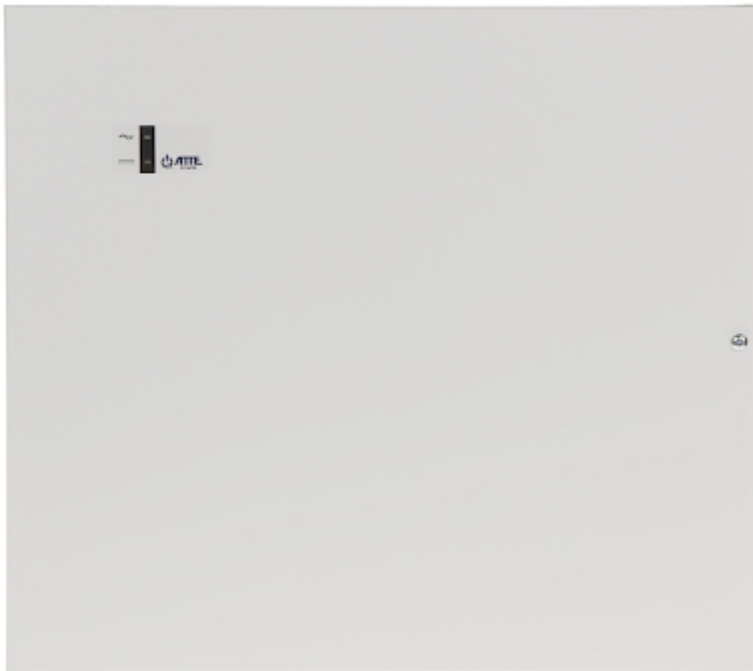
SPECIFICATION

LAN ports:	<ul style="list-style-type: none">• 2 x RJ45 10/100/1000 Base-T - Uplink,• 8 x RJ45 10/100 Base-T + PoE (802.3af/at) / Passive PoE
Management via WWW / console:	—
LED diodes:	AC, DC, CHARGING (battery charging), PoE, Gigabit Ethernet
Transmission speed:	<ul style="list-style-type: none">• 10 / 100 / 1000 Mbps : 2 x Port Uplink,• 10 / 100 Mbps : 8 x Port LAN & PoE
Maximal output power:	<ul style="list-style-type: none">• 40 W @ Passive PoE - LAN1 ... LAN8 ports,• 30 W @ PoE (802.3af/at) - LAN1 ... LAN8 ports
Maximal total power:	60 W
Operation modes:	Standard : 100 m @ 10/100 Mb/s - LAN1 ... LAN8 ports

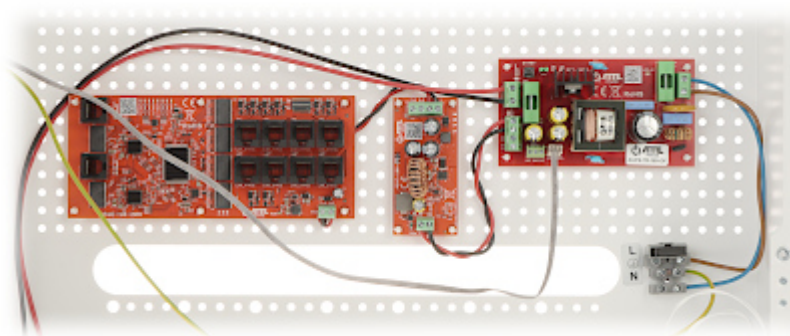
Main features:	<ul style="list-style-type: none"> • 4K UHD support • The ability to independently turn on and off the PoE power for each of the LAN 1 ... LAN 8 ports • The modular design streamlines service tasks and enables quick and easy system expansion • The raster system of module assembly facilitates the expansion of the device by further modules • 2 x Place for battery : 12 V / 18 Ah • Place for recorder (NVR) • Battery charging current : 1 A / 2 A - (set with the JP1 jumper) • Battery - Protection against reverse polarity connection, Protection against deep discharge of the battery • Technical outputs of the OC type signaling loss of voltage at the PSU output (OUF) and loss of voltage in the 230V mains (ACF) • PSU thermal protection : 130 °C • Overload protection • LAN & PoE ports - Short-circuit protection, Overvoltage • TAMPER switch indicating open the cover • "Index of Protection" : IP20
Power supply:	190 ... 260 V AC
Weight:	4.40 kg
Dimensions:	455 x 405 x 150 mm
Manufacturer / Brand:	ATTE
Guarantee:	3 years

PRESENTATION





Internal view of the housing:



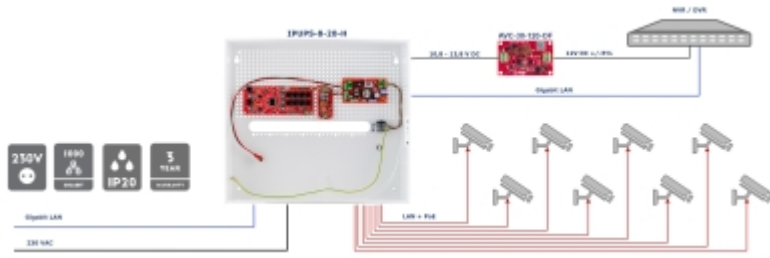
Mounting side view:



Example of application:



DELTA-OPTI Monika Matysiak; <https://www.delta.poznan.pl>
POL; 60-713 Poznań; Graniczna 10
e-mail: delta-opti@delta.poznan.pl; tel: +(48) 61 864 69 60



In the kit:



PACKAGE

Dimensions (L x W x H): 0x0x0 mm	Gross Weight: 0 kg
----------------------------------	--------------------