

Code: APTI-POE0801-120W

Switch PoE **APTI-POE0801-120W** 9-PORT

Net: **53.50 EUR** Gross: **65.81 EUR**

Due to the reliability and ensuring high quality of transmission, the APTI-POE0801-120W 9-port PoE switch is an ideal solution for applications in CCTV IP installations.

Attention! When the Extend function is enabled the PoE range increases up to 200m and the transmission speed reduces to 10 Mb/s.



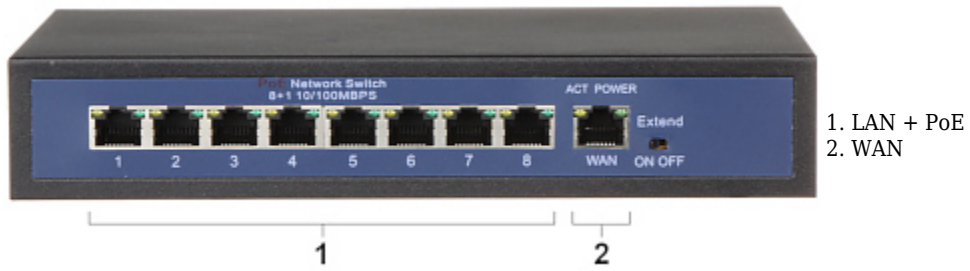
SPECIFICATION

Standards:	IEEE 802.3af, IEEE 802.3at, IEEE 802.3x, IEEE 802.3u, IEEE 802.3az
LAN ports:	9 x RJ45 (8 x PoE (802.3af/at))
Management via WWW / console:	—
LED diodes:	LAN, PoE
Transmission speed:	<ul style="list-style-type: none">• 10 / 100 Mbps : 1 x Port LAN,• 10 / 100 Mbps : 8 x LAN & PoE ports
Maximal output power:	30 W / port PoE
Maximal total power:	120 W
MAC addresses table:	2k
Main features:	<ul style="list-style-type: none">• 1 x Port Uplink• Range PoE : 200 m - The EXTEND mode enabled
Certificates:	CE
Power supply:	230 V AC
Operation temp:	0 °C ... 55 °C
Weight:	0.72 kg
Dimensions:	220 x 143 x 41 mm
Manufacturer / Brand:	APTI
Guarantee:	2 years

PRESENTATION

DELTA-OPTI Monika Matysiak; <https://www.delta.poznan.pl>
POL; 60-713 Poznań; Graniczna 10
e-mail: delta-opti@delta.poznan.pl; tel: +(48) 61 864 69 60

Front view:



Rear view:



In the kit:

