

Code: IPUPS-16-20-H

POE SWITCH WITH BUFFERED POWER SUPPLY **IPUPS-16-20-H** 16-PORT ATTE

Net: **557.93 EUR** Gross: **557.93 EUR**

16-port PoE switch in an internal enclosure with a buffered power supply. 16 ports support Power over Ethernet (PoE) function.

The IPUPS-16-20-H set consists of 2 XPOE-10-20-OF switch modules, 2 AUPS-70-120-OF buffered power supply modules and 2 ASUC-50-480-OF voltage converter modules enclosed in the ABOX-H internal enclosure with space for 2 18Ah batteries. The buffered PSUs are adapted to work with maintenance-free batteries (gel or AGM) with nominal voltage 12V.



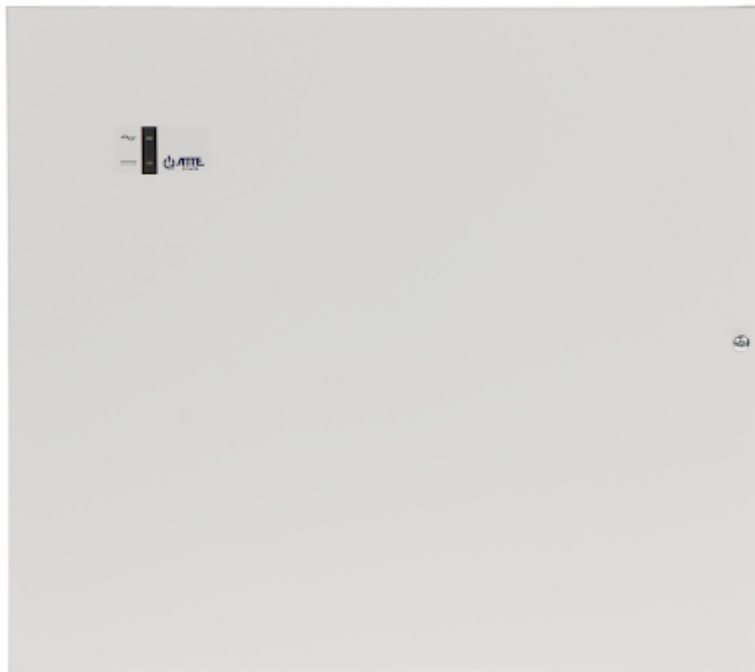
SPECIFICATION

LAN ports:	<ul style="list-style-type: none">• 2 x RJ45 10/100/1000 Base-T - Uplink• 16 x RJ45 10/100 Base-T, PoE 802.3af/at / Passive PoE
Management:	—
LED diodes:	2 x 230V AC IN, 2 x 12V DC OUT, 2 x 48V DC OUT, 2 x CHARGING (battery charging), 20 x LAN, 4 x Gigabit Ethernet
Transmission speed:	<ul style="list-style-type: none">• 10 / 100 / 1000 Mbps : 2 x Port Uplink• 10 / 100 Mbps : 16 x Port LAN & PoE
Maximal output power:	<ul style="list-style-type: none">• 40 W @ Passive PoE - LAN & PoE ports,• 30 W @ PoE (802.3af/at) - LAN & PoE ports
Maximal total power:	130 W
Main features:	<ul style="list-style-type: none">• The ability to independently turn on and off the PoE power for each of the LAN 1 ... LAN 8 ports• The modular design streamlines service tasks and enables quick and easy system expansion• The raster system of module assembly facilitates the expansion of the device by further modules• 2 x Place for battery : 12 V / 18 Ah• Battery charging current : 1 A / 2 A - (set with the JP1 jumper)• Technical outputs of the OC type signaling loss of voltage at the PSU output (OUF) and loss of voltage in the 230V mains (ACF)• Protection against deep discharge of the battery• PSU thermal protection : 130 °C• TAMPER switch indicating open the cover
Power supply:	230 V AC
Weight:	4.7 kg

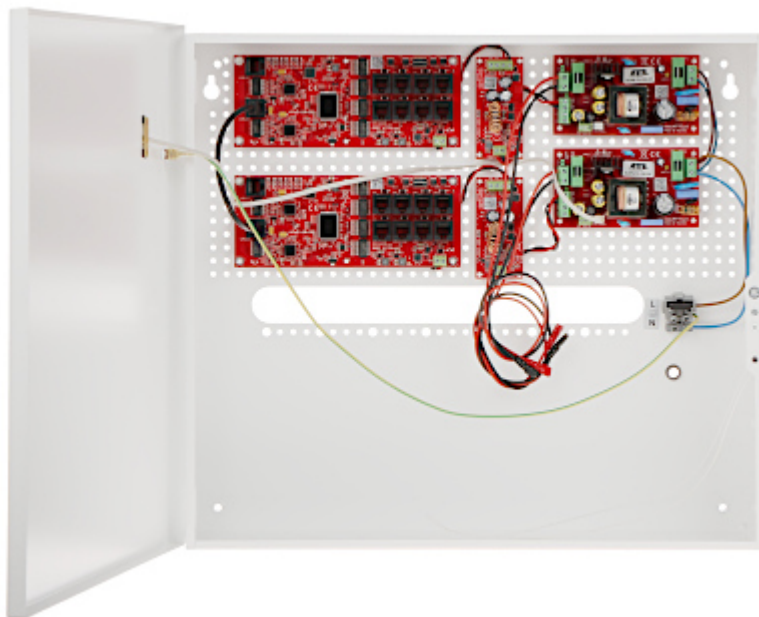
DELTA-OPTI Monika Matysiak; <https://www.delta.poznan.pl>
POL; 60-713 Poznań; Graniczna 10
e-mail: delta-opti@delta.poznan.pl; tel: +(48) 61 864 69 60

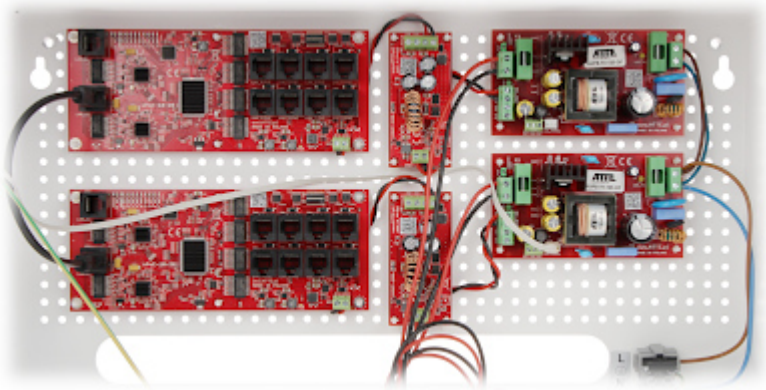
Dimensions:	455 x 405 x 150 mm
Manufacturer / Brand:	ATTE
Guarantee:	2 years

PRESENTATION



Internal view of the housing:





Mounting side view:



PACKAGE

Dimensions (L x W x H): 0x0x0 mm	Gross Weight: 0 kg
----------------------------------	--------------------

