

Code: DH-PFM880

ACCESS POINT WITH ANTENNA **DH-PFM880** DAHUA

Net: **346.83 EUR** Gross: **426.60 EUR**



The DH-PFM880 is an integrated solution for professional outdoor wireless networks. Thanks to a unique construction, device offers unparalleled performance in such a compact device. The casing made of UV resistant plastic is resistant to even the most severe weather conditions.

SPECIFICATION

Frequency range:	5470 MHz ... 5825 MHz
Antenna type:	16 dBi Outdoor, 2Tx 2Rx MIMO
Polarization:	vertical/horizontal
Standards:	802.11 a/n
Baud rates:	max. 300 Mbps
Wireless transmission range:	max. 3 km
Max. power consumption:	10 W
Ethernet interface:	1 x 10/100 Mbps BASE-TX (Cat. 5, RJ-45)
Vertical beam width (V):	12 °
Horizontal beam width (H):	90 °
Operation mode:	Client, WDS client, Access Point, Access Point WDS, Repeater
Protections:	15kV surge protection of radio line
Transmitter power:	27 dBm
Receiver sensitivity:	<ul style="list-style-type: none">• -74 dBm @ 65 Mbps• -96 dBm @ 1 Mbps
Processor:	Atheros AR7240, 400 MHz
Port USB:	—
Power supply PoE:	✓

DELTA-OPTI Monika Matysiak; <https://www.delta.poznan.pl>
POL; 60-713 Poznań; Graniczna 10
e-mail: delta-opti@delta.poznan.pl; tel: +(48) 61 864 69 60

Power supply:	24 V / 0.5 A PoE (power adapter included)
Operation temp. / Relative humidity:	-30 °C ... 70 °C / 5 % ... 95 %
Weight:	2.10 kg - device 0.82 kg - Antenna
Dimensions:	290 x 265 x 66 mm - device 450 x 140 x 55 mm - Antenna
Manufacturer / Brand:	DAHUA
Guarantee:	3 years

PRESENTATION

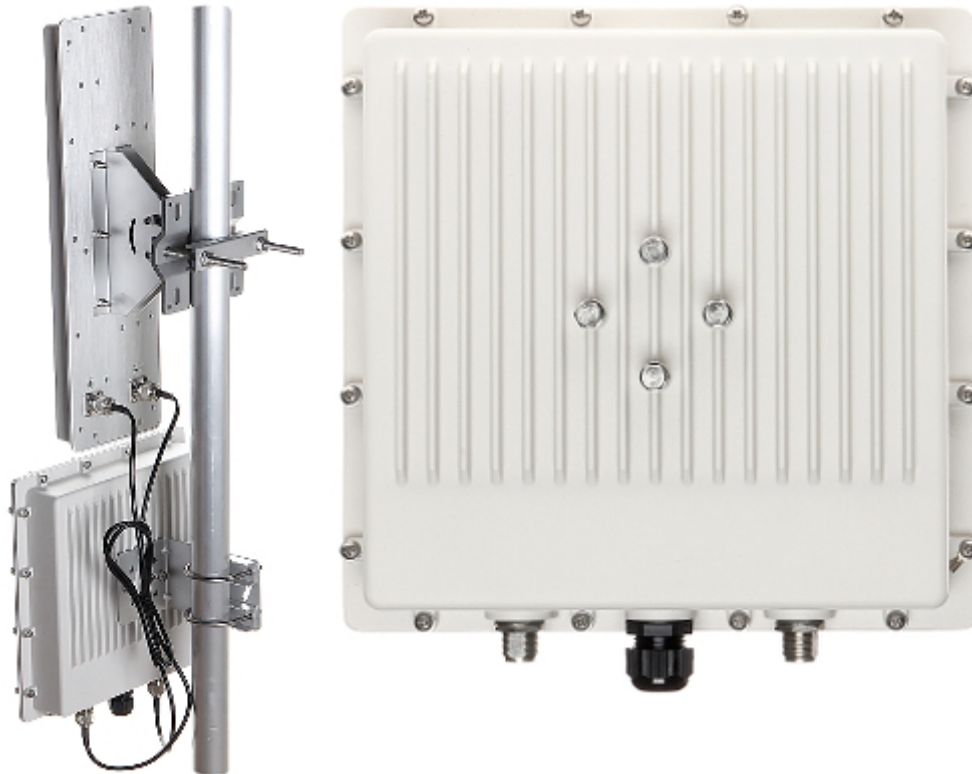
Front view:



Side view:



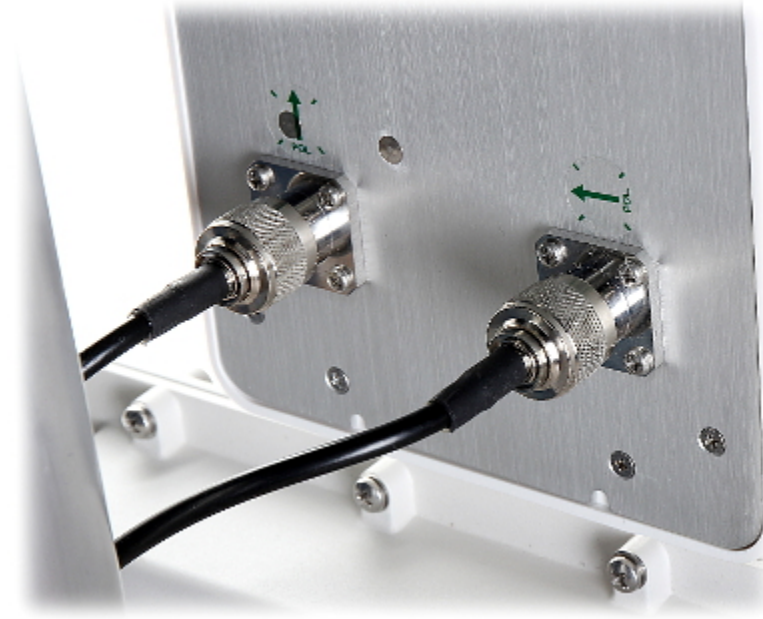
Rear view:



Mast mounting diameter:



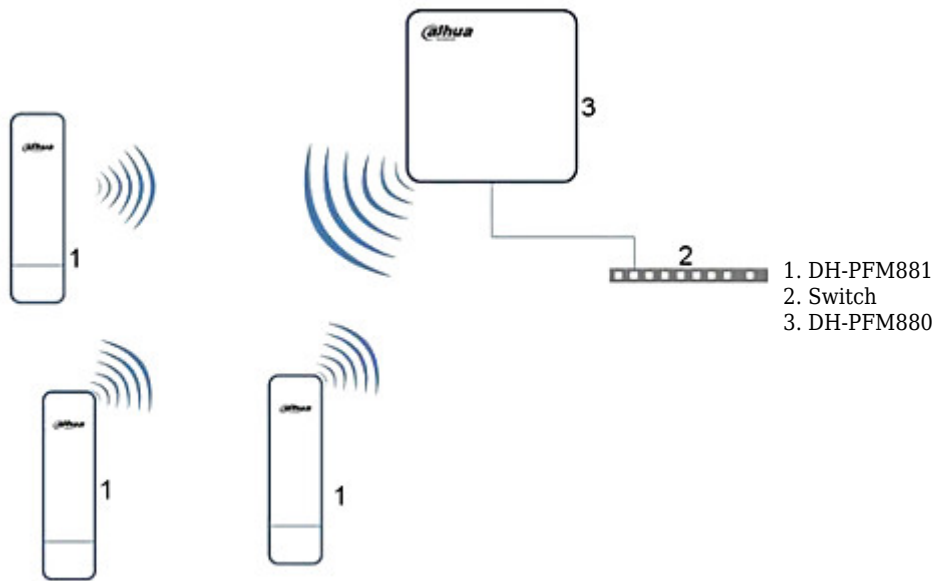
Antenna connector:



Method of mounting:

:

Schematic diagram for point-multipoint configuration:



In the kit:





DELTA-OPTI Monika Matysiak; <https://www.delta.poznan.pl>
POL; 60-713 Poznań; Graniczna 10
e-mail: delta-opti@delta.poznan.pl; tel: +(48) 61 864 69 60