

Code: PP-48/RJ/C

## PATCH PANEL RJ-45 **PP-48/RJ/C**

Net: **48.27 EUR** Gross: **59.37 EUR**

The device is structured cabling termination for UTP cat.5 cables. The device is mounted to RACK 19" cabinet.



### SPECIFICATION

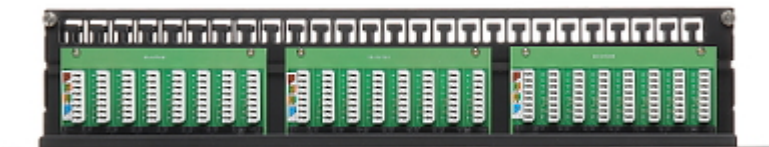
Width:	19 "
Height:	1 U
Number of ports:	48 pcs
Main features:	<ul style="list-style-type: none"><li>• It is compatible with Category 5e</li><li>• Twisted-pair cable mounting using the Krone Impact Tool</li><li>• On the device mainboard there are holes to cables mounting using cable ties</li></ul>
Color:	Black
Weight:	1.36 kg
Dimensions:	483 x 44 x 89 mm
Guarantee:	<b>3 years</b>

### PRESENTATION

Front view:



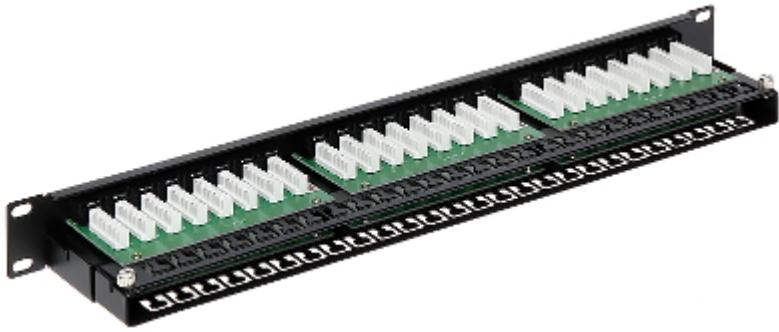
Top view:



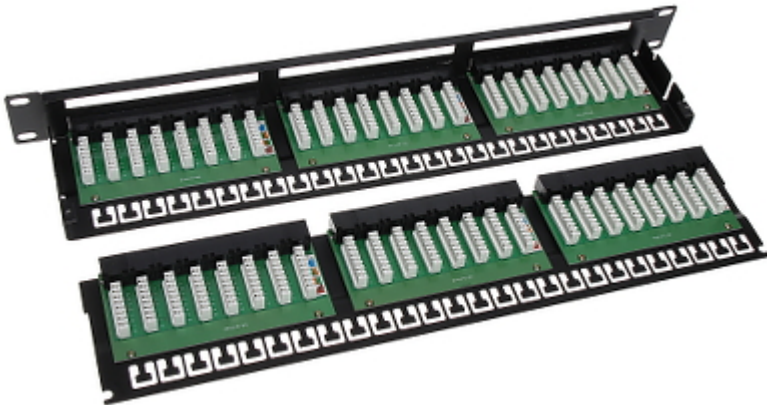
in the back:



DELTA-OPTI Monika Matysiak; <https://www.delta.poznan.pl>  
POL; 60-713 Poznań; Graniczna 10  
e-mail: [delta-opti@delta.poznan.pl](mailto:delta-opti@delta.poznan.pl); tel: +(48) 61 864 69 60



Patch panel after removing the upper plate:



In the kit:

