

Code: PP-24/RJ/C

PATCH PANEL RJ-45 PP-24/RJ/C

Net: 30.20 USD Gross: 37.15 USD

The device is structured cabling termination for UTP cat.5 cables. The device is mounted to RACK 19" cabinet.



SPECIFICATION

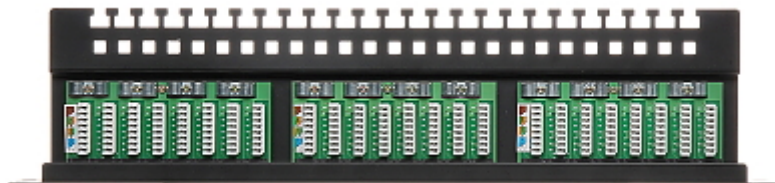
Width:	19 "
Height:	1 U
Number of ports:	24 pcs
Main features:	<ul style="list-style-type: none">• It is compatible with Category 5e• Twisted-pair cable mounting using the Krone Impact Tool• On the device mainboard there are holes to cables mounting using cable ties
Color:	Black
Weight:	1 kg
Dimensions:	483 x 44 x 110 mm
Guarantee:	3 years

PRESENTATION

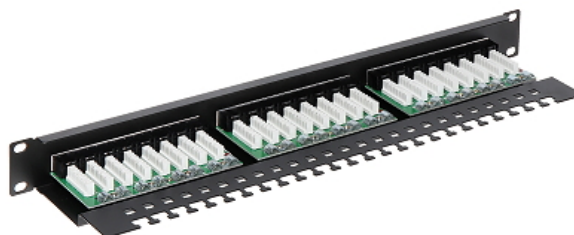
Front view:



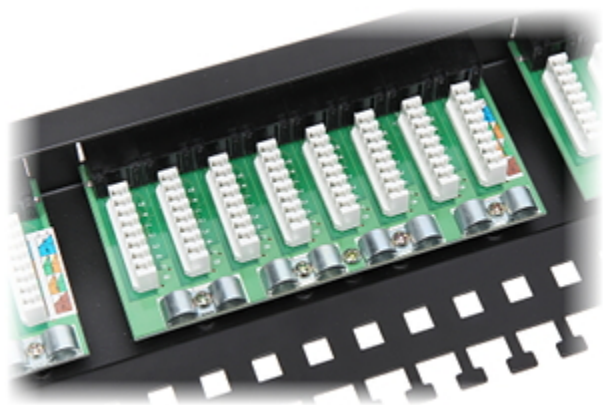
Top view:



in the back:



DELTA-OPTI Monika Matysiak; <https://www.delta.poznan.pl>
POL; 60-713 Poznań; Graniczna 10
e-mail: delta-opti@delta.poznan.pl; tel: +(48) 61 864 69 60



In the kit:

